

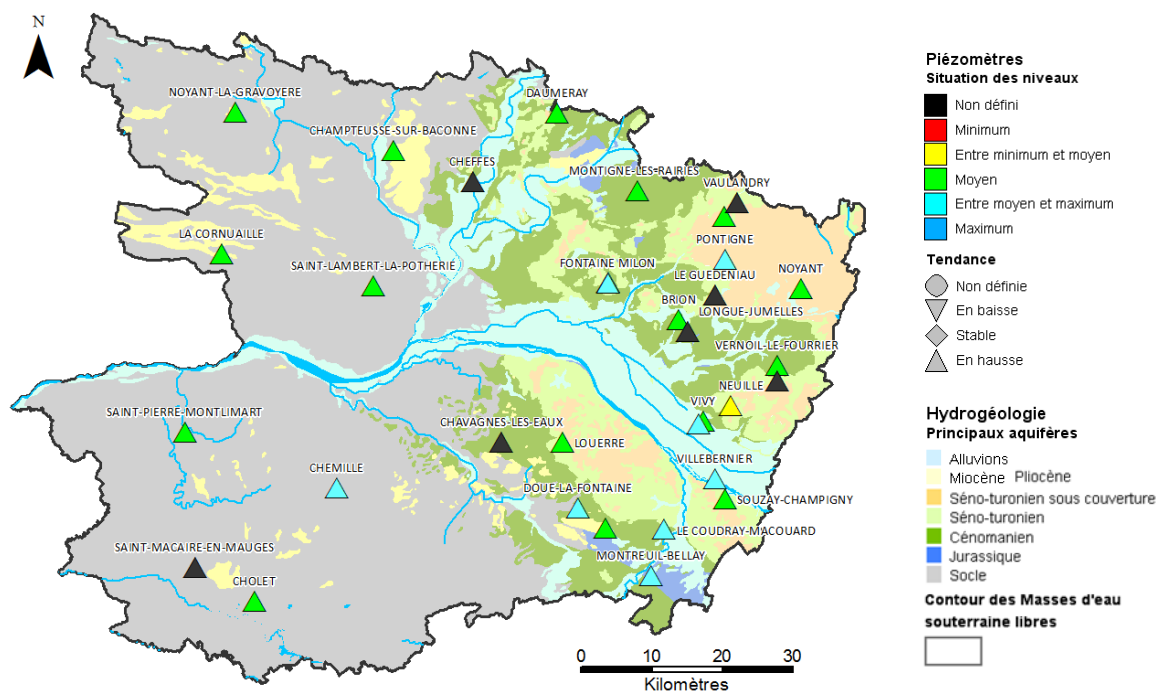
**Département : Maine-et-Loire (49)**
**Date : 1<sup>er</sup> mars 2016**

Le BRGM – Service Géologique Régional des Pays de la Loire – gère depuis 2003 le réseau de suivi piézométrique patrimonial du département du Maine-et-Loire.

Depuis fin octobre 2014, ce réseau comporte 33 ouvrages répartis de manière à suivre les aquifères majeurs à l'échelle départementale et ceux, plus localisés, qui présentent un enjeu particulier (faluns du Miocène, calcaires du Bathonien-Jurassique).

Les données issues de ce réseau sont par ailleurs mises à disposition et téléchargeables sur le site internet public [www.ades.eaufrance.fr](http://www.ades.eaufrance.fr). ADES est la banque nationale d'Accès aux Données sur les Eaux Souterraines.

## Situation piézométrique au 1<sup>er</sup> mars 2016



En janvier et février, sous l'effet des précipitations abondantes, la hausse des niveaux piézométriques s'est poursuivie et accélérée pour l'ensemble des nappes observées. Dans le cas des nappes les moins réactives (nappe du Cénomanien à Brion, nappe du Miocène à Doué-la-Fontaine, nappes de socle à Noyant-la-Gravoyère et Saint Pierre Montlimart), la recharge s'est amorcée au tout début du mois de janvier.

A début mars, la recharge est en cours pour l'ensemble des nappes suivies. Les niveaux piézométriques sont en hausse et majoritairement supérieurs ou très supérieurs aux niveaux moyens calculés (période 2004-2015).



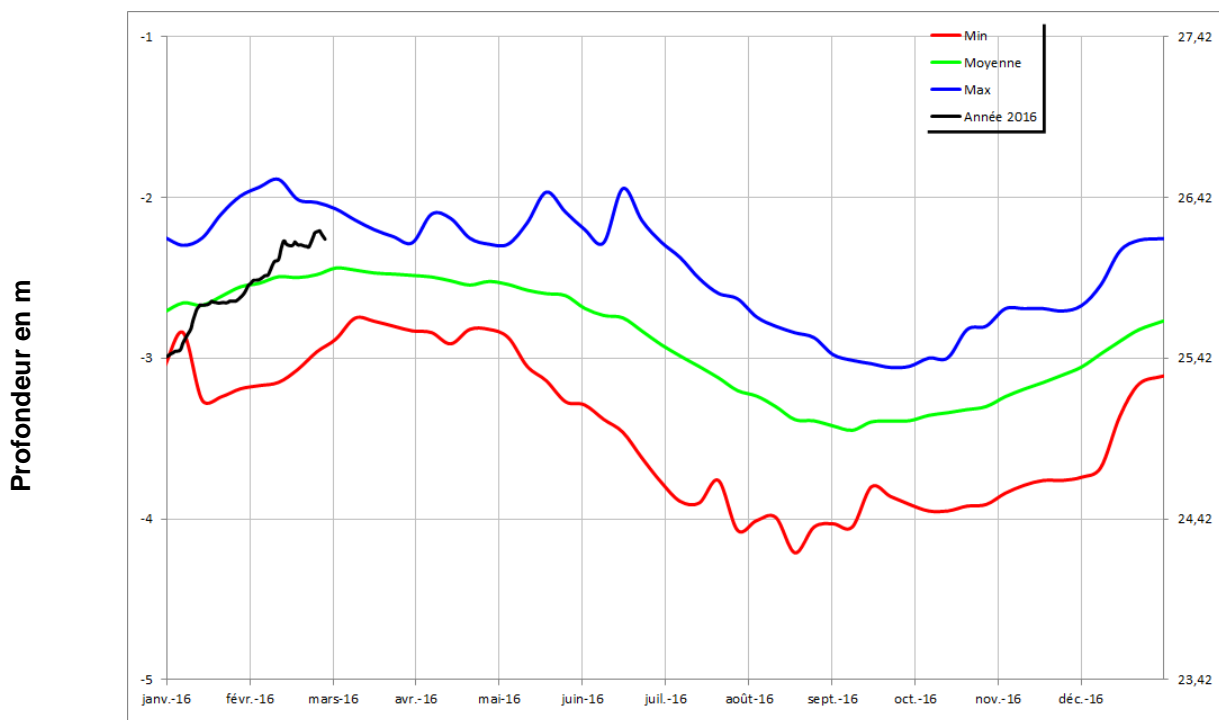
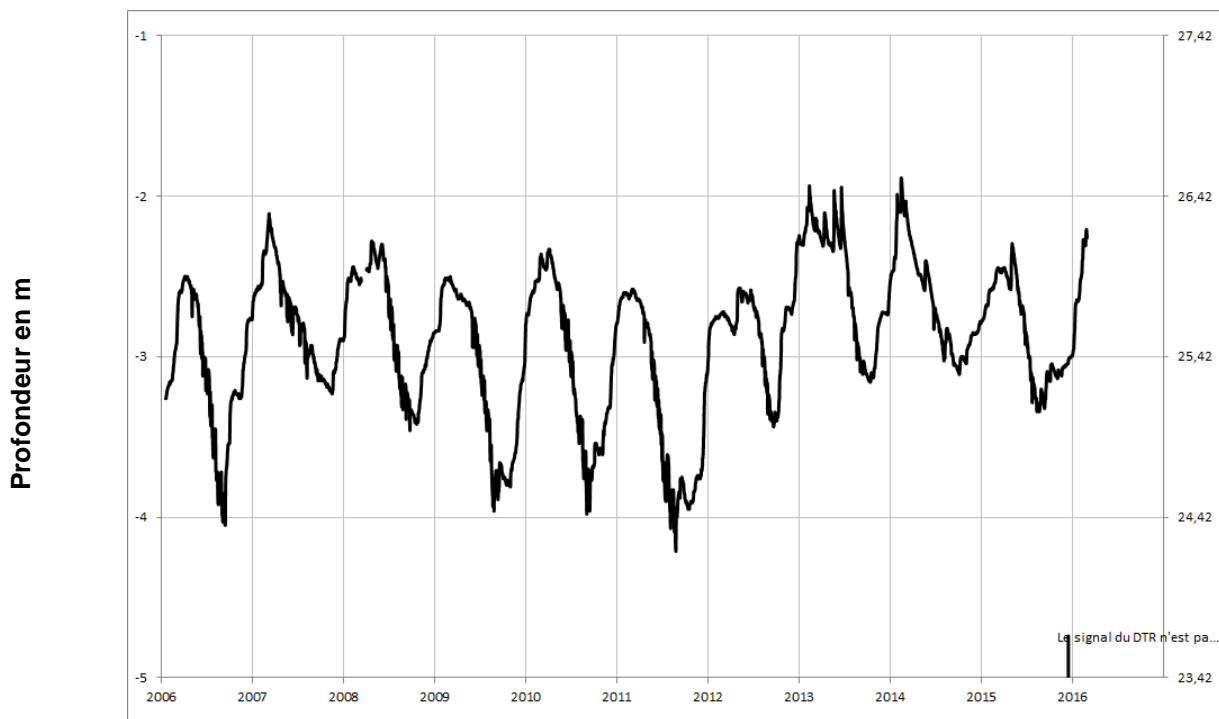
## Chroniques piézométriques au 1<sup>er</sup> mars 2016

Seules les chroniques permettant d'illustrer la situation sont reportées.

L'ensemble des données de suivi de ce réseau est consultable et téléchargeable sur : [www.adeseaufrance.fr](http://www.adeseaufrance.fr).

Alluvions de la Loire

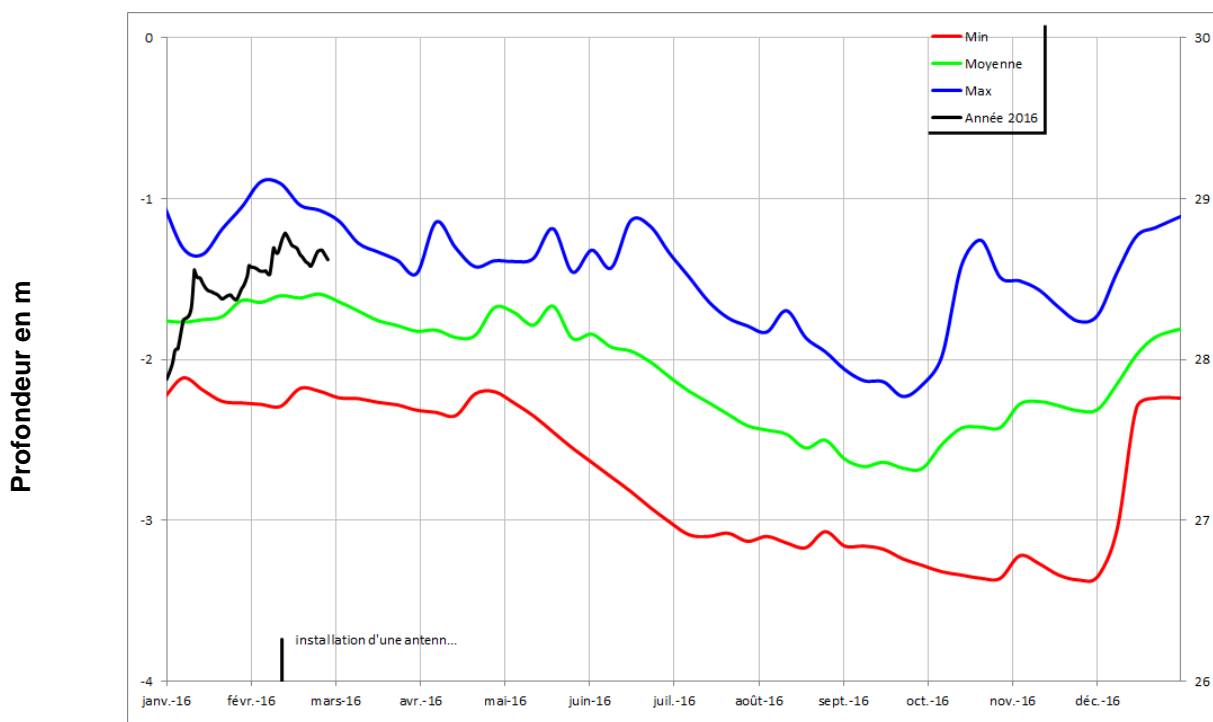
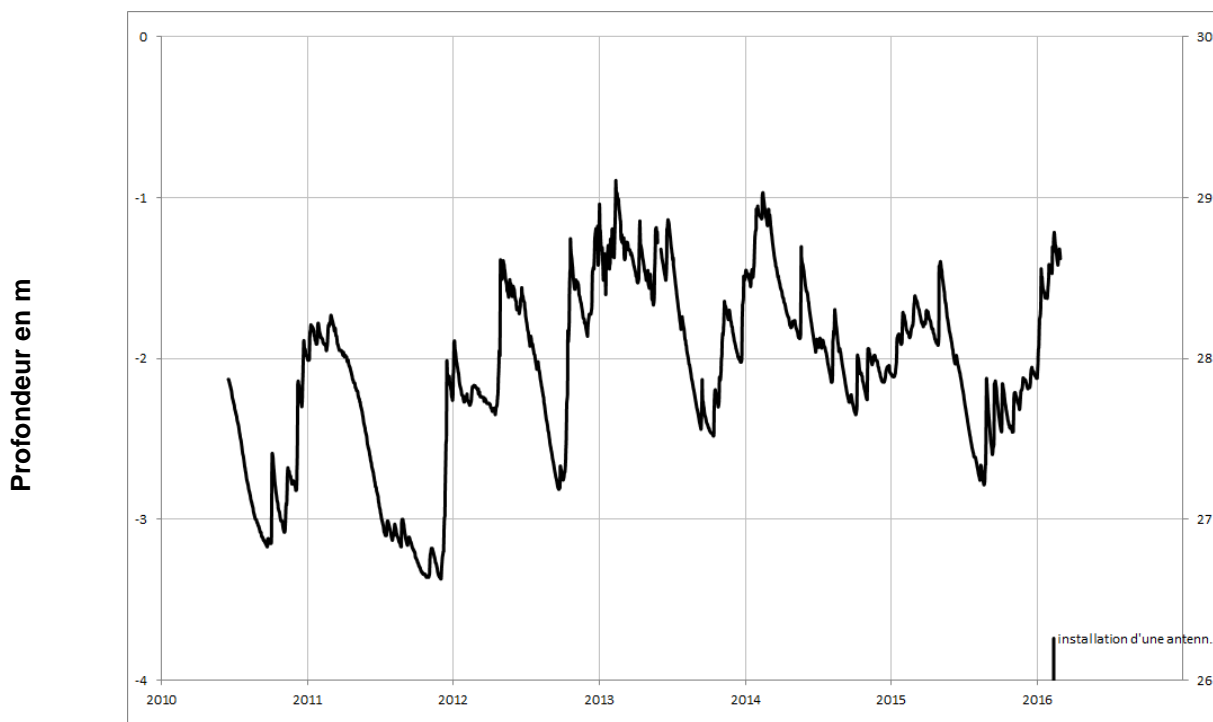
### VILLEBERNIER 04854X0257/PZ





Alluvions de la Loire

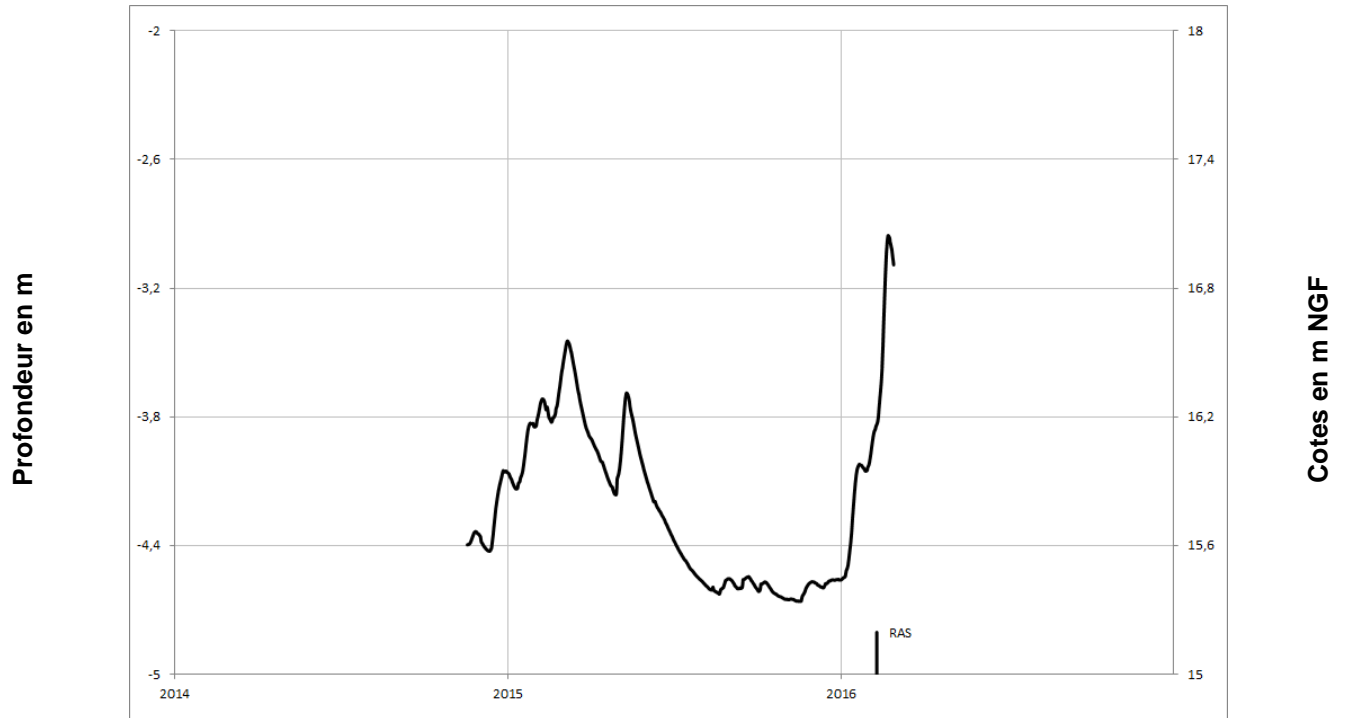
**VIVY**  
**04854X0296/P**





Alluvions de la Sarthe

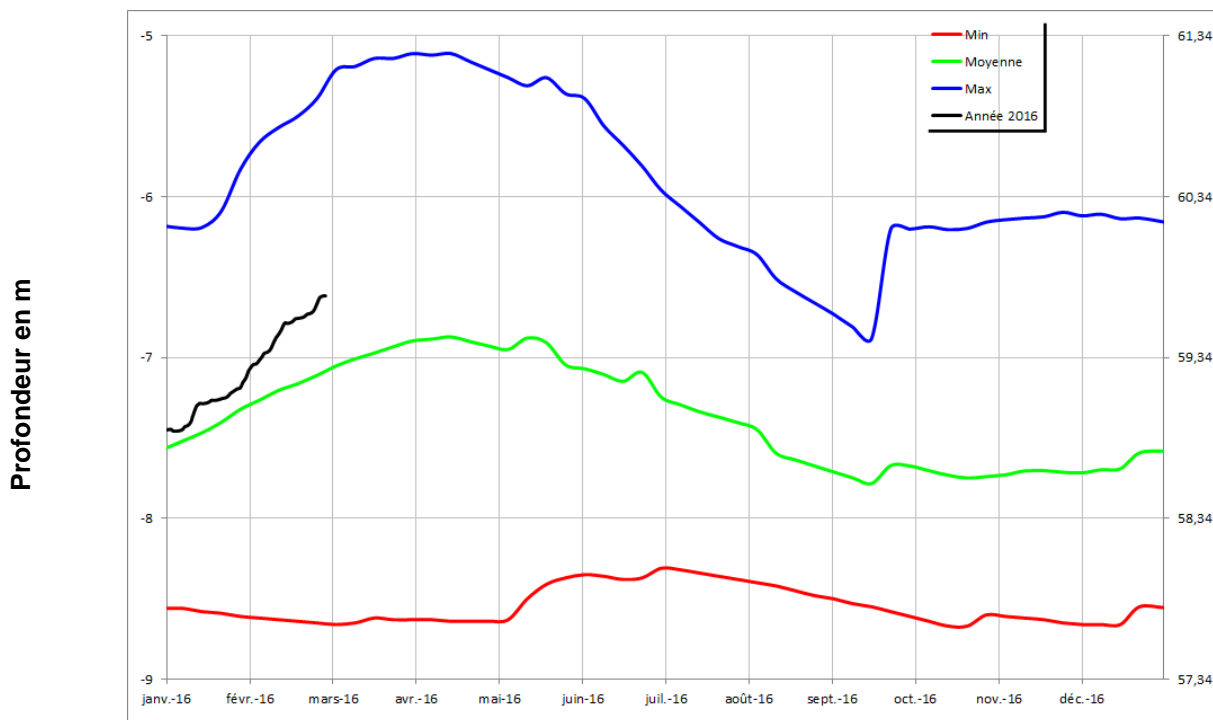
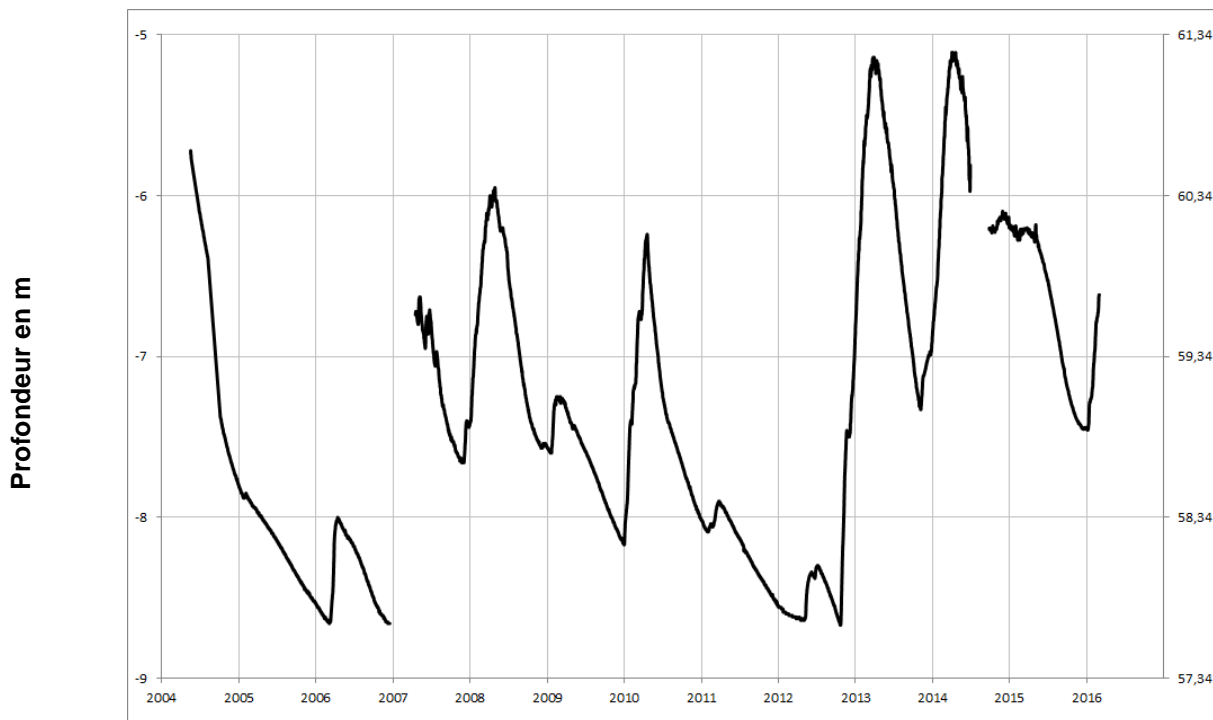
### CHEFFES 04233X0066/P





Miocène (Faluns)

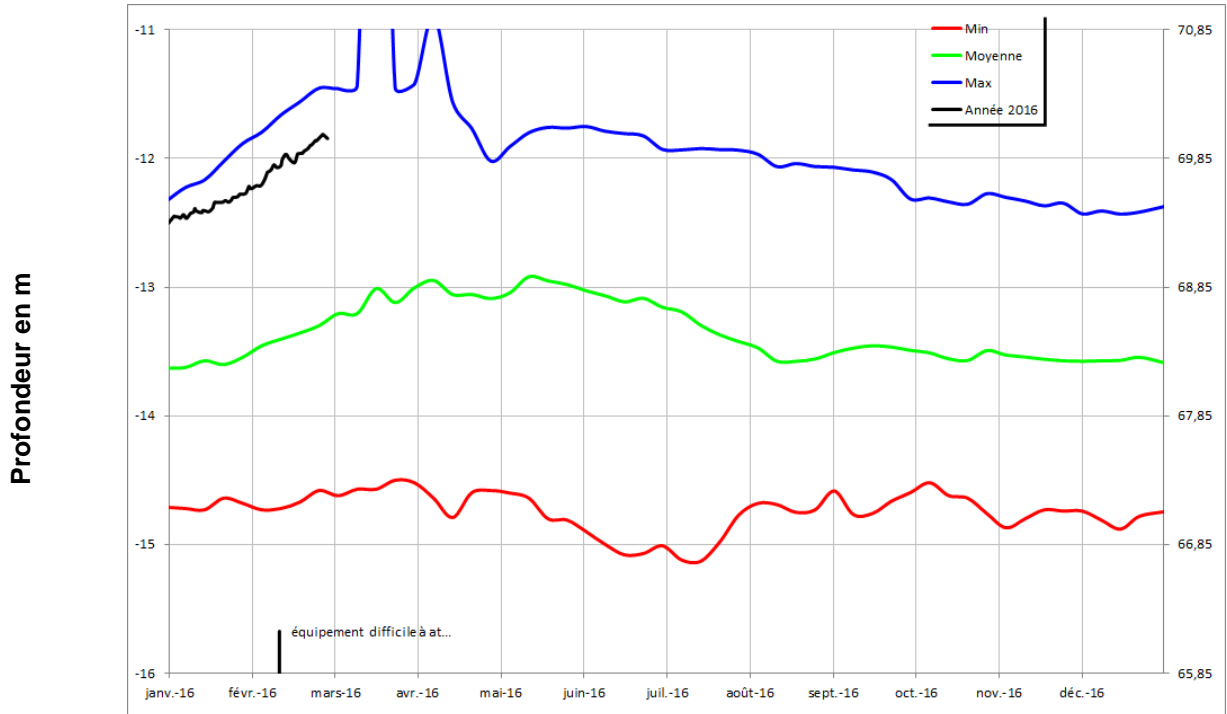
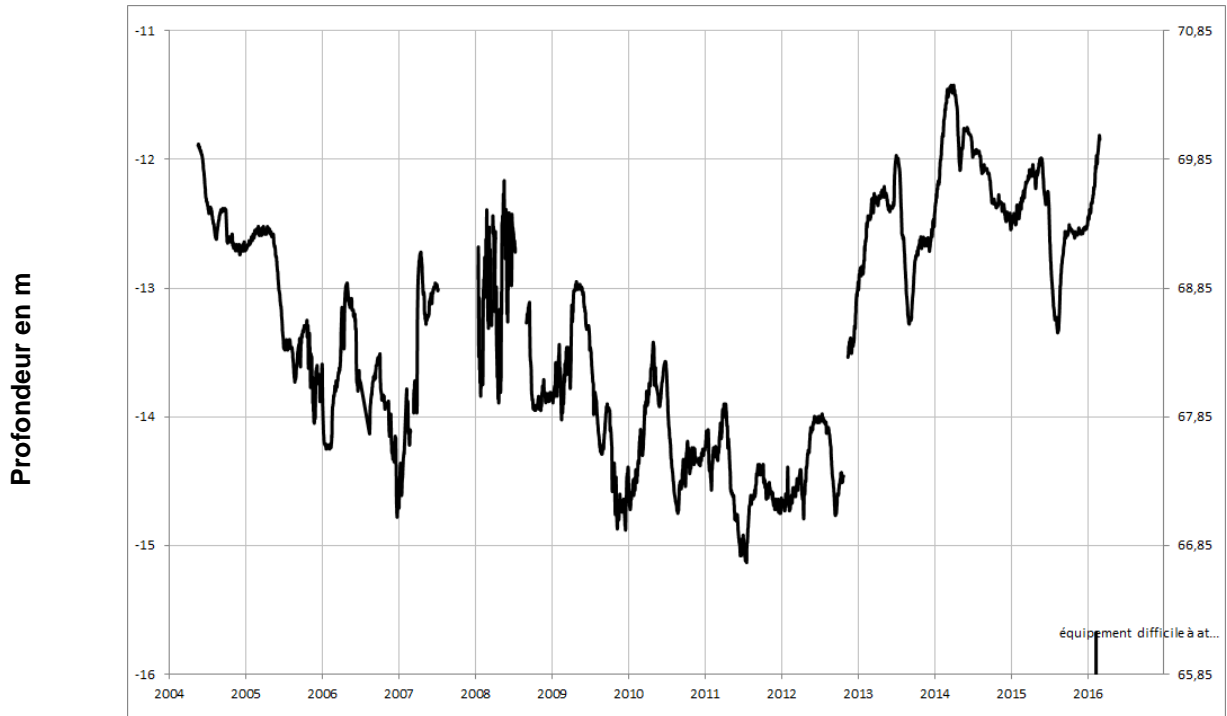
**DOUE LA FONTAINE**  
**04856X0084/F**





Séno-Turonien

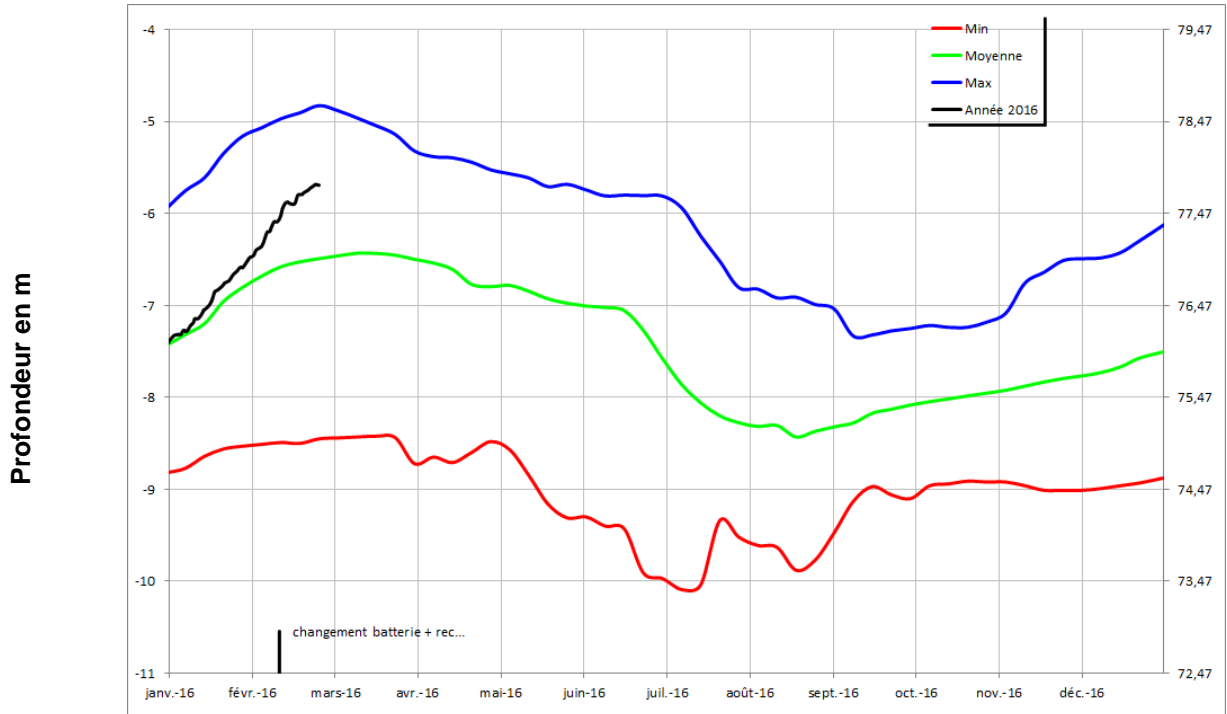
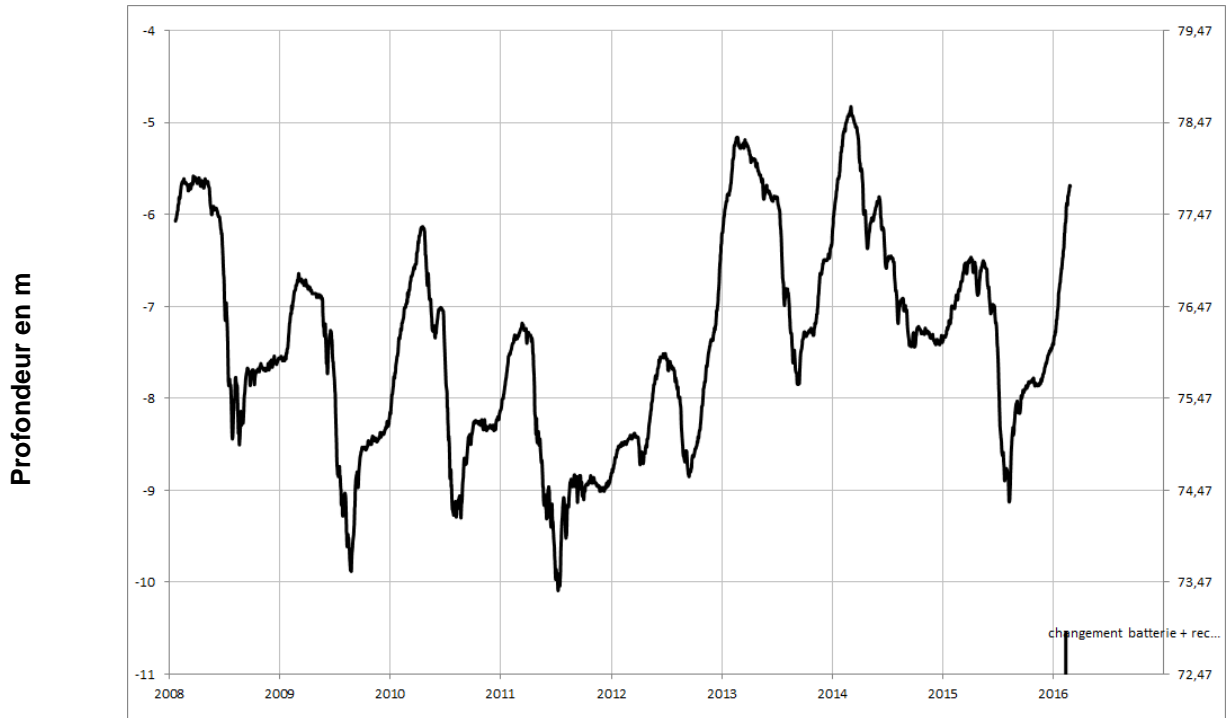
**PONTIGNE**  
**04248X0022/F**





Séno-Turonien

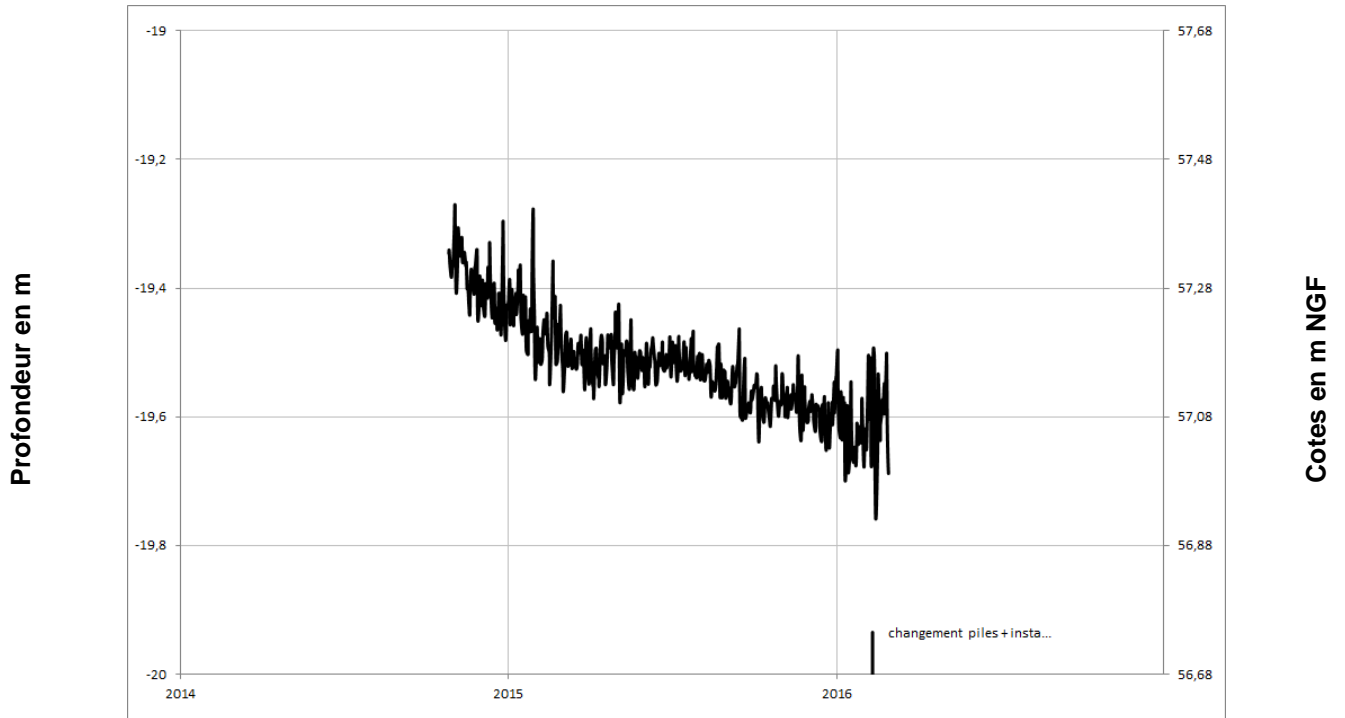
**NOYANT**  
**04562X0074/PZ**





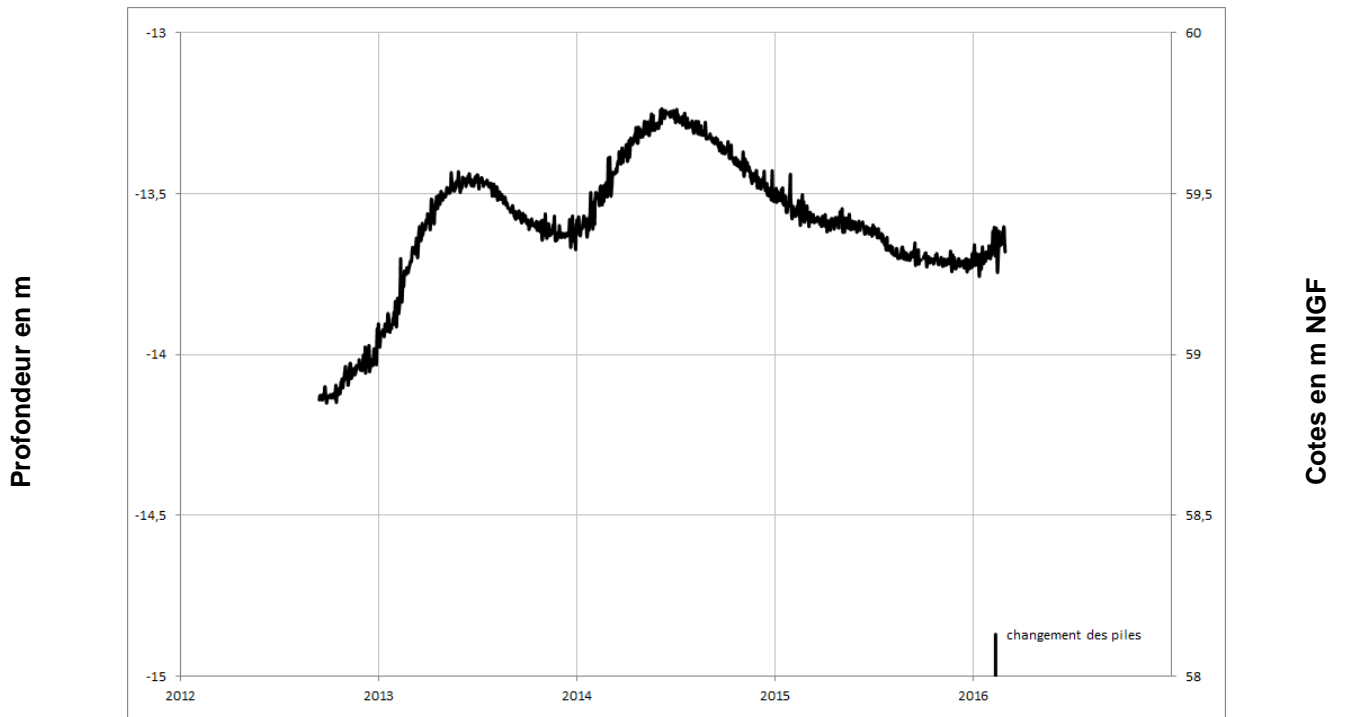
Séno-Turonien

**VAULANDRY**  
**04248X0053/PZ**



Séno-Turonien

**LE GUEDENIAU**  
**04554X0026/PZ**

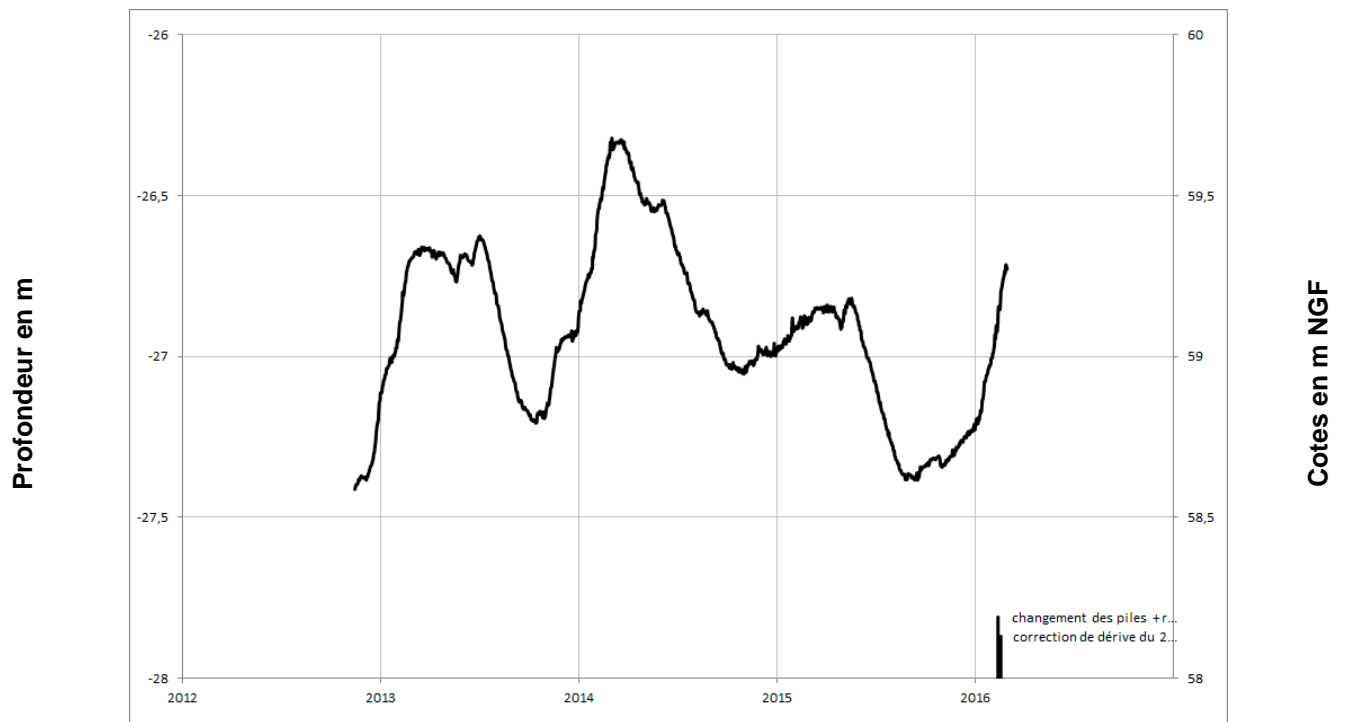






Séno-Turonien

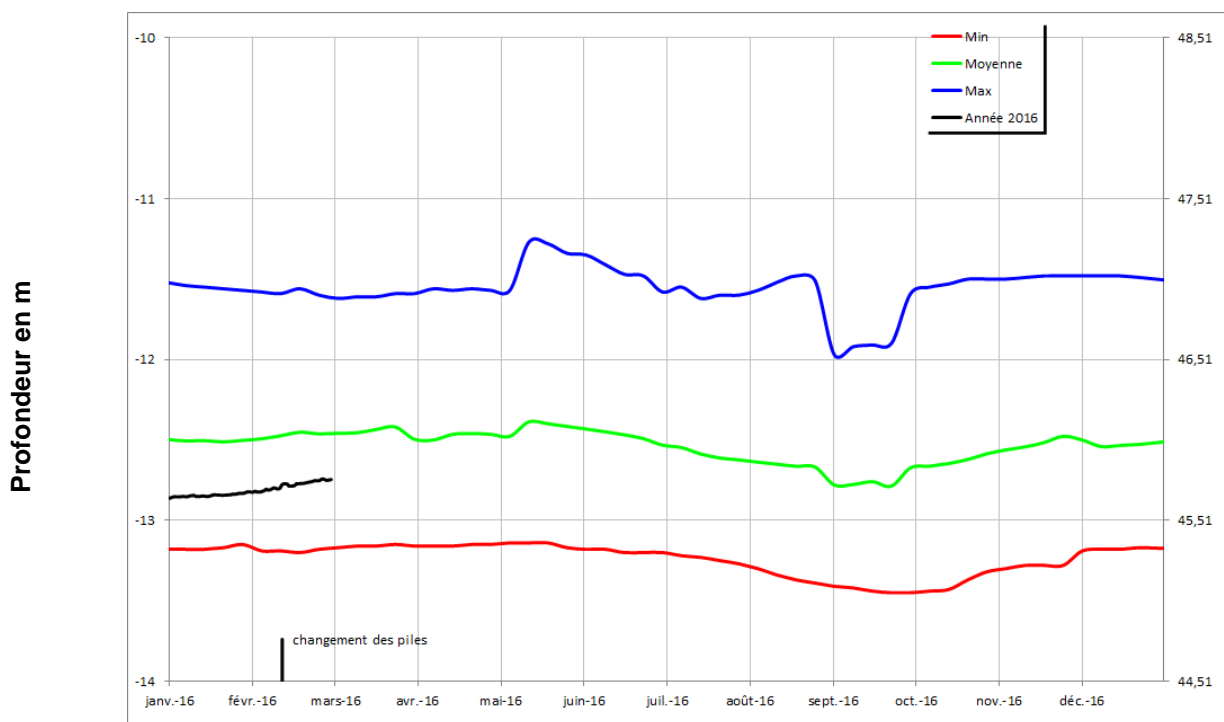
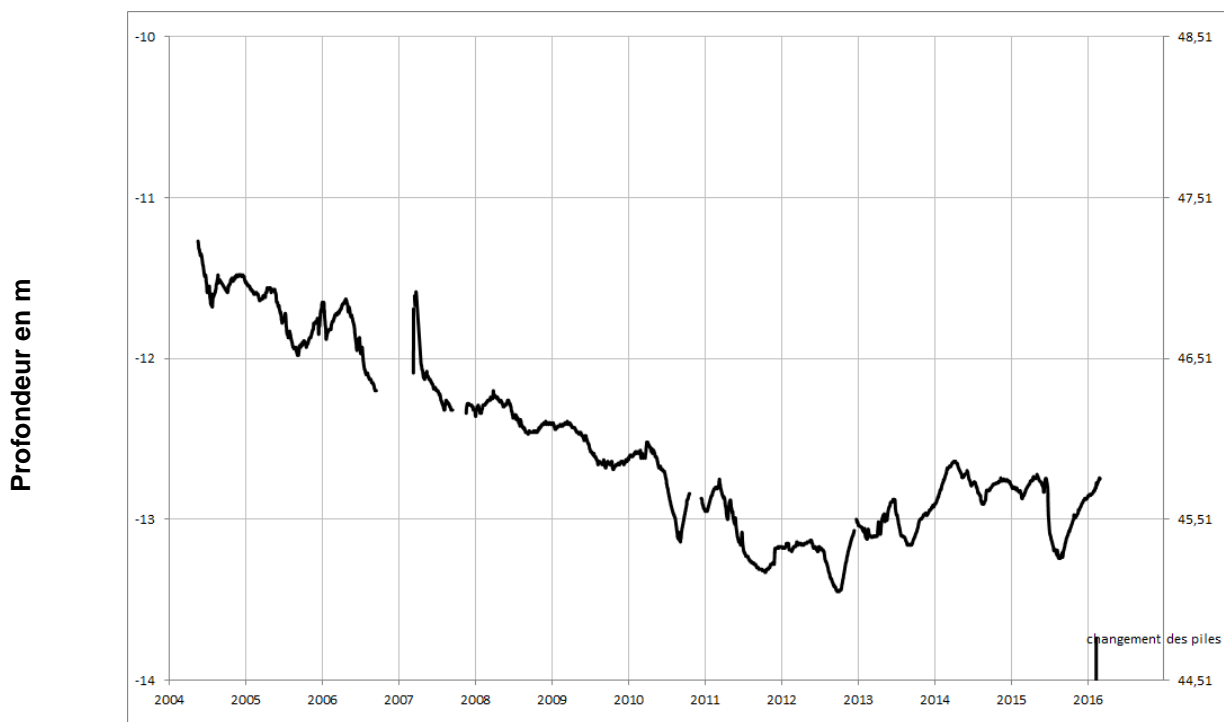
## VERNOIL-LE-FOURRIER 04565X0076/PZ





Séno-Turonien

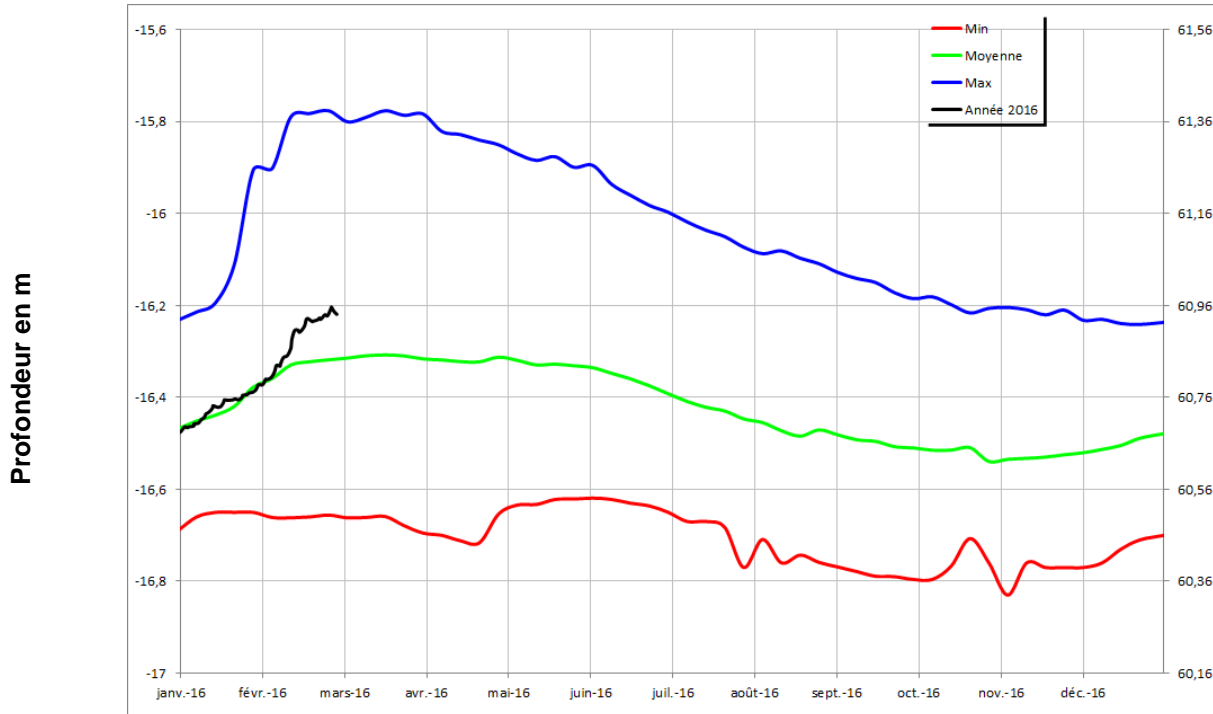
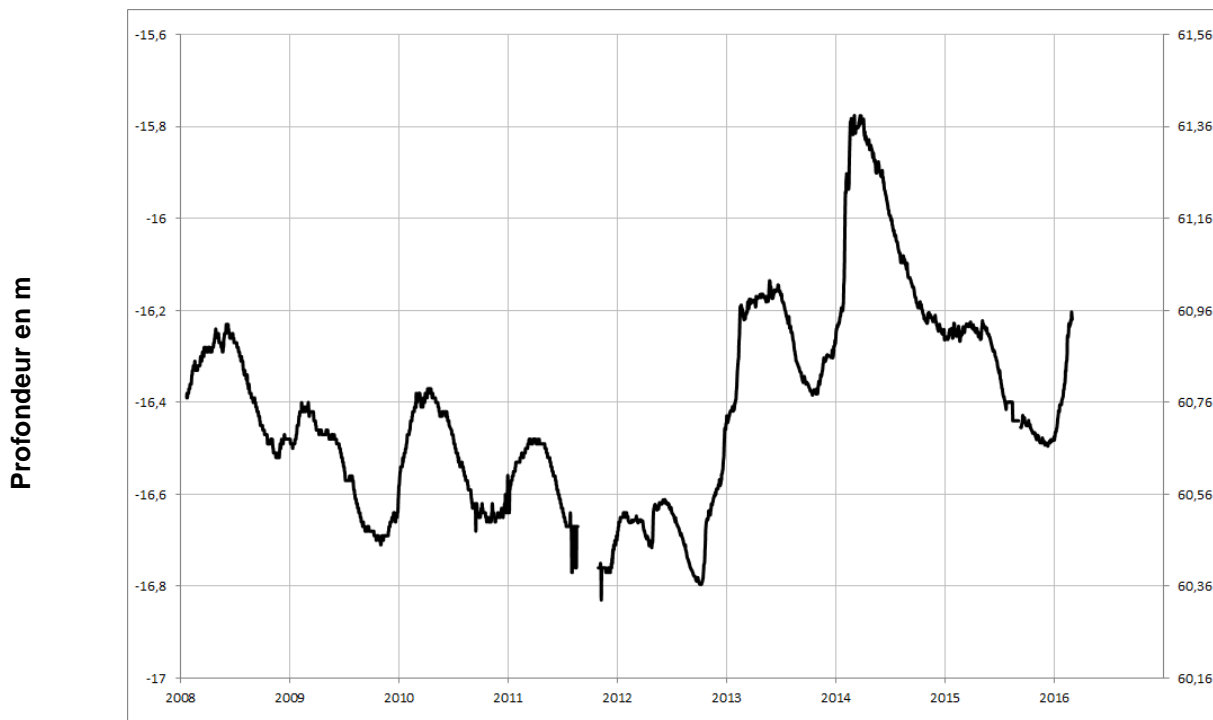
**NEUILLE**  
**04558X0072/AEP**





Séno-Turonien

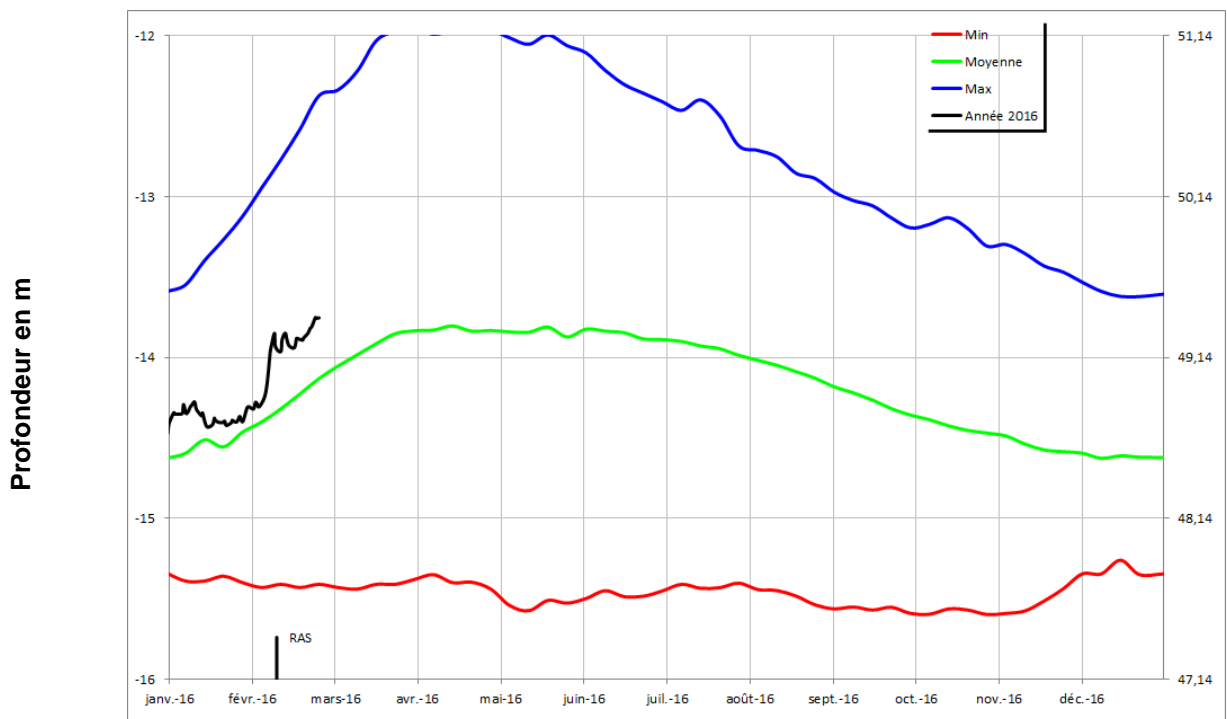
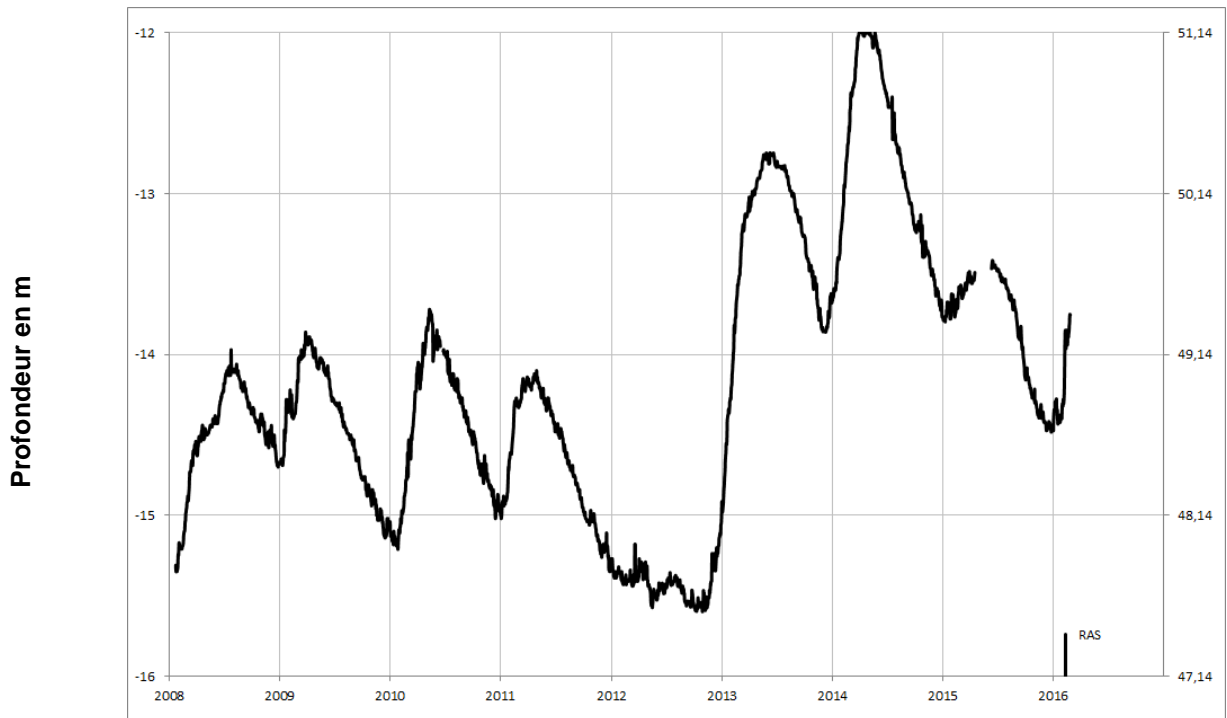
**LOUERRE**  
**04851X0091/PZ**





Cénomaniens (sables)

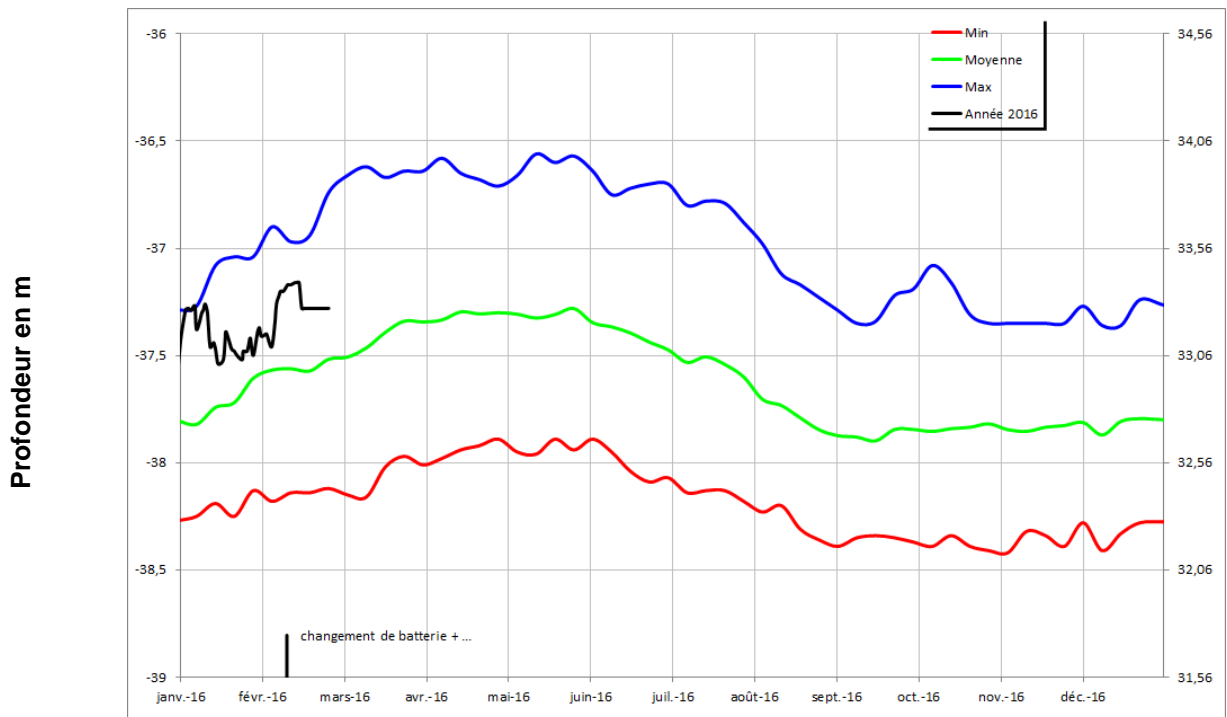
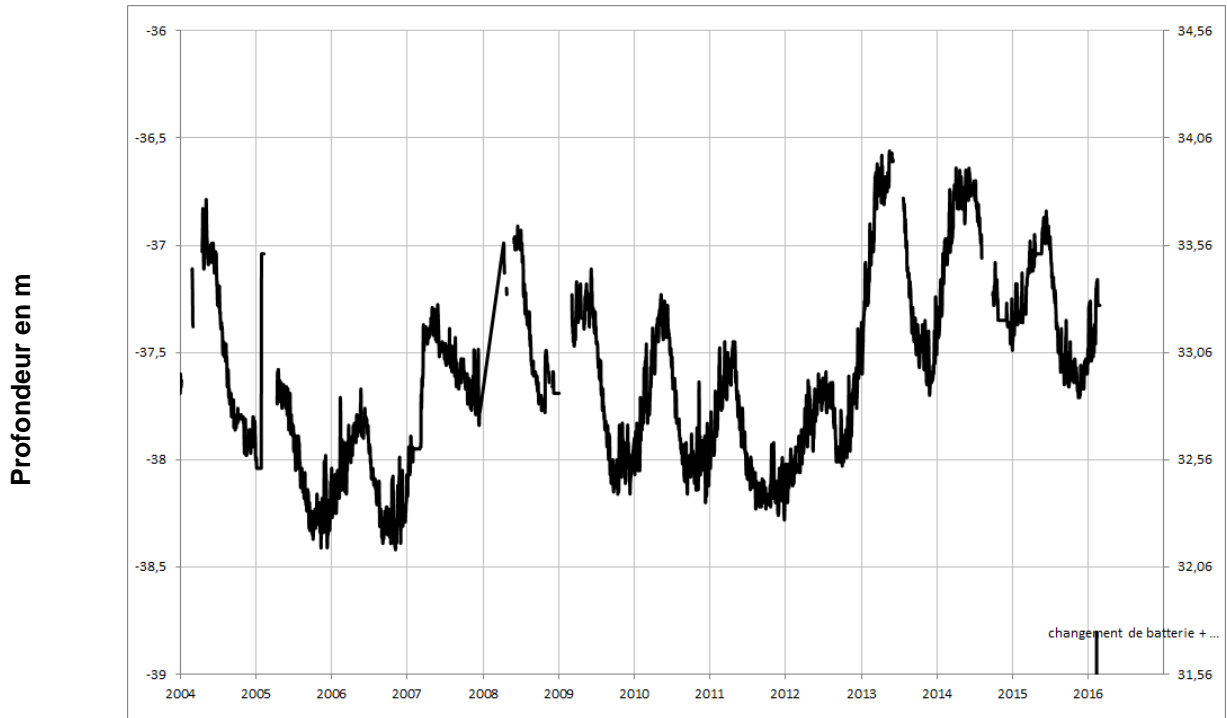
**DAUMERAY**  
**03925X0017/PZ**





Cénomaniens (sables)

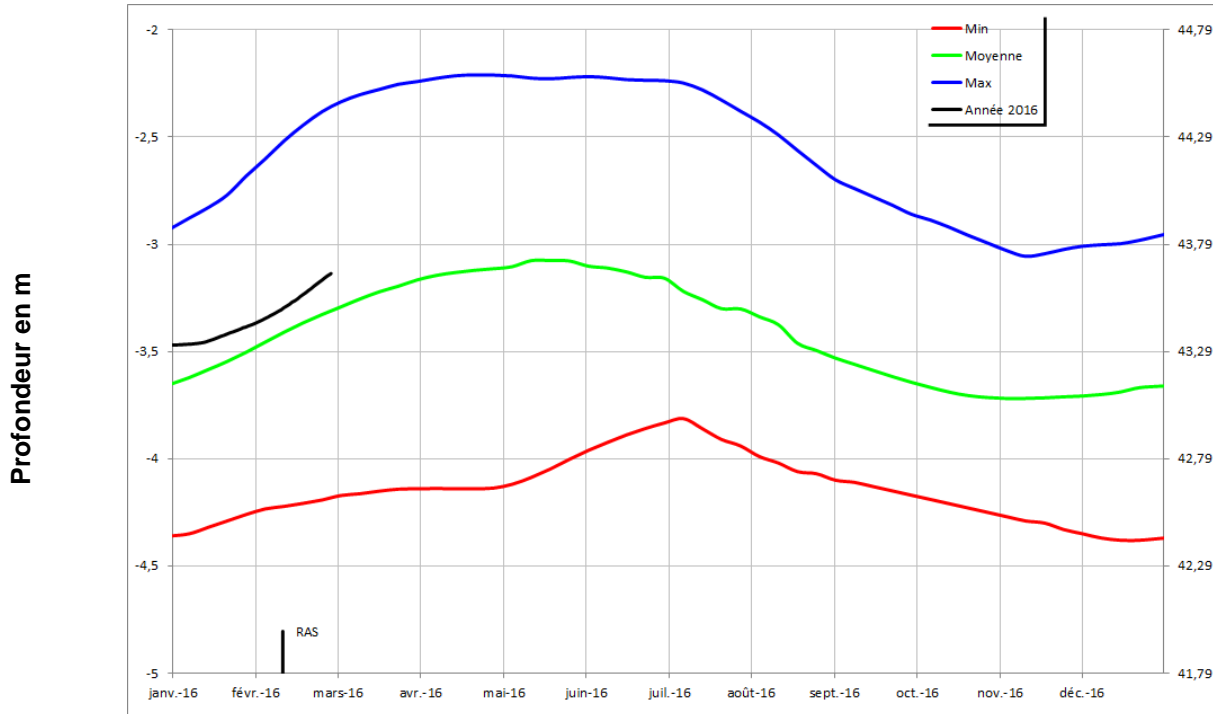
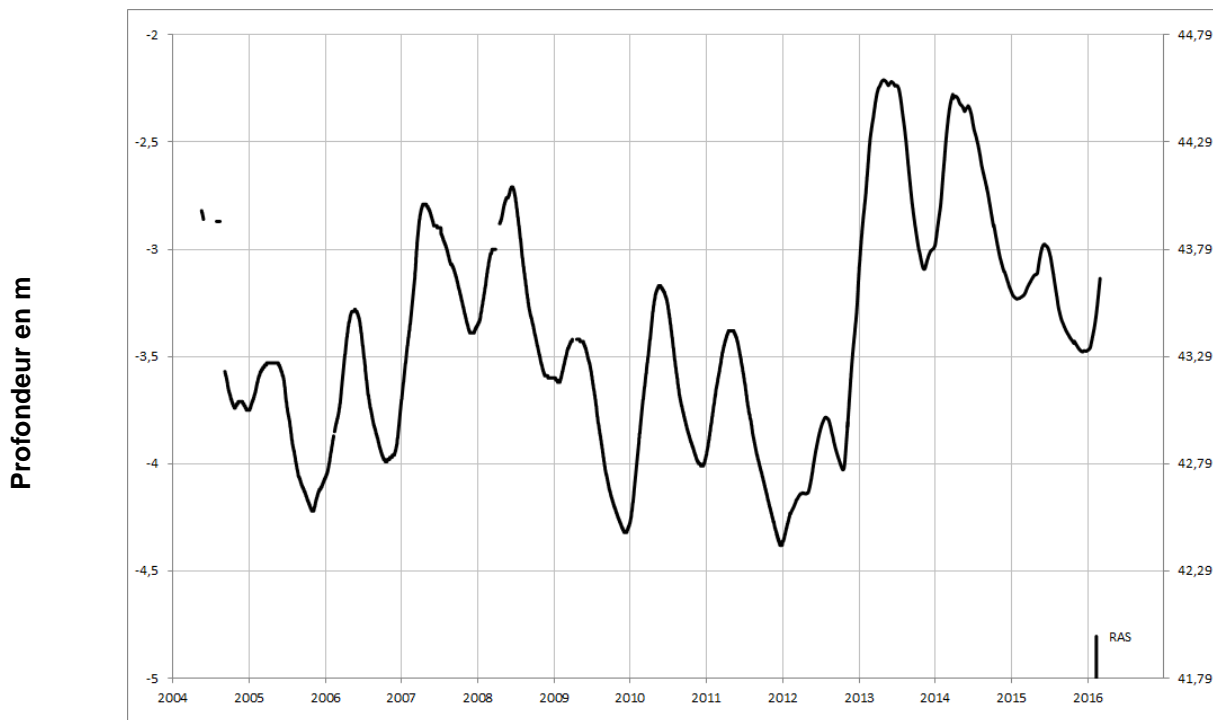
**MONTIGNE LES RAIRIES**  
**04242X0053/F**





Cénomaniens (sables)

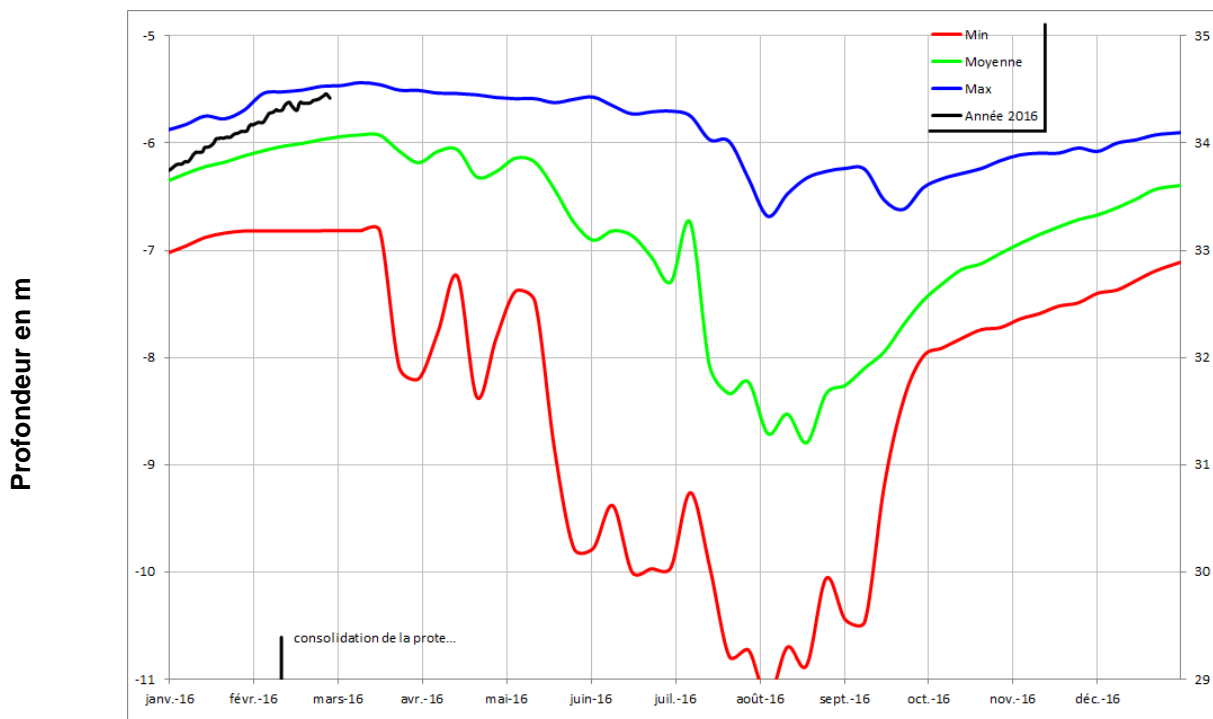
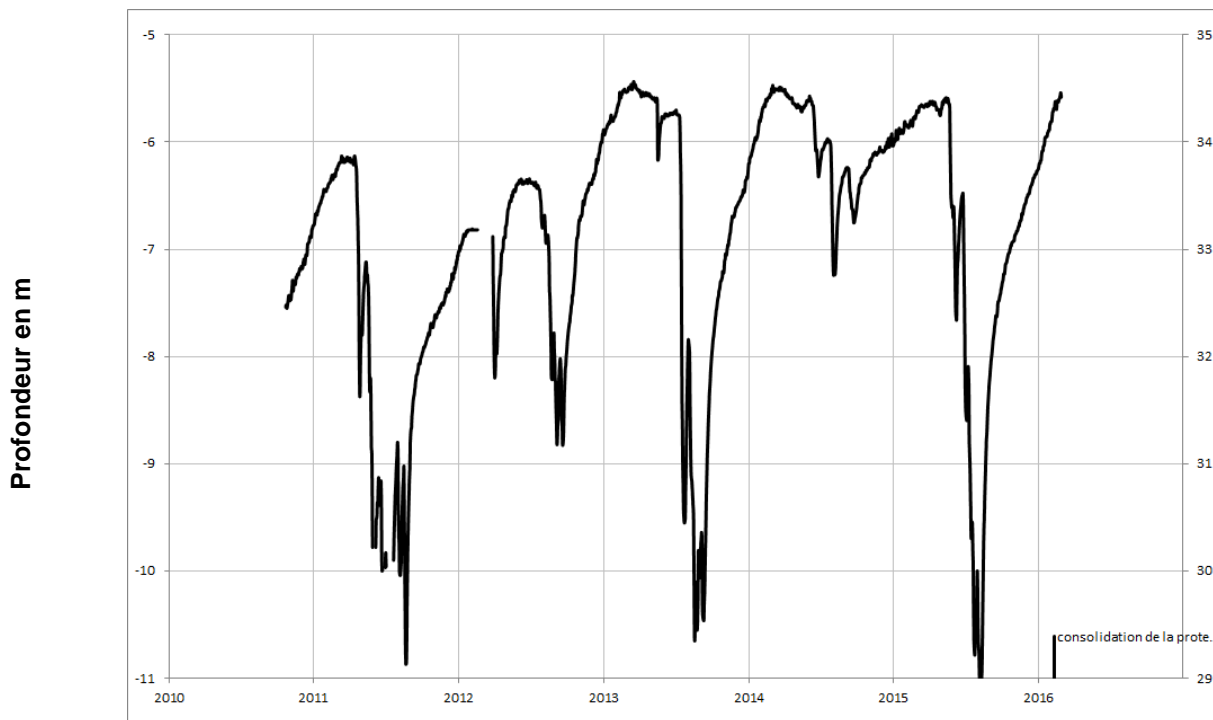
**BRION**  
**04553X0023/F**





Cénomaniens (sables)

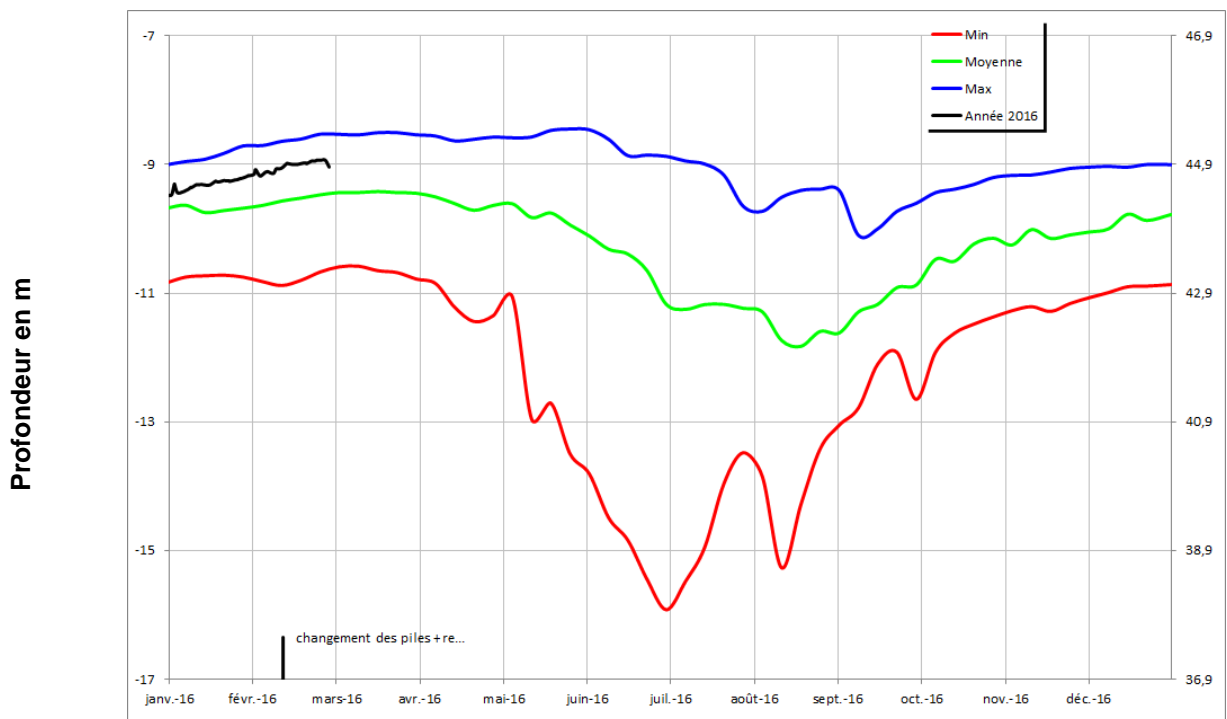
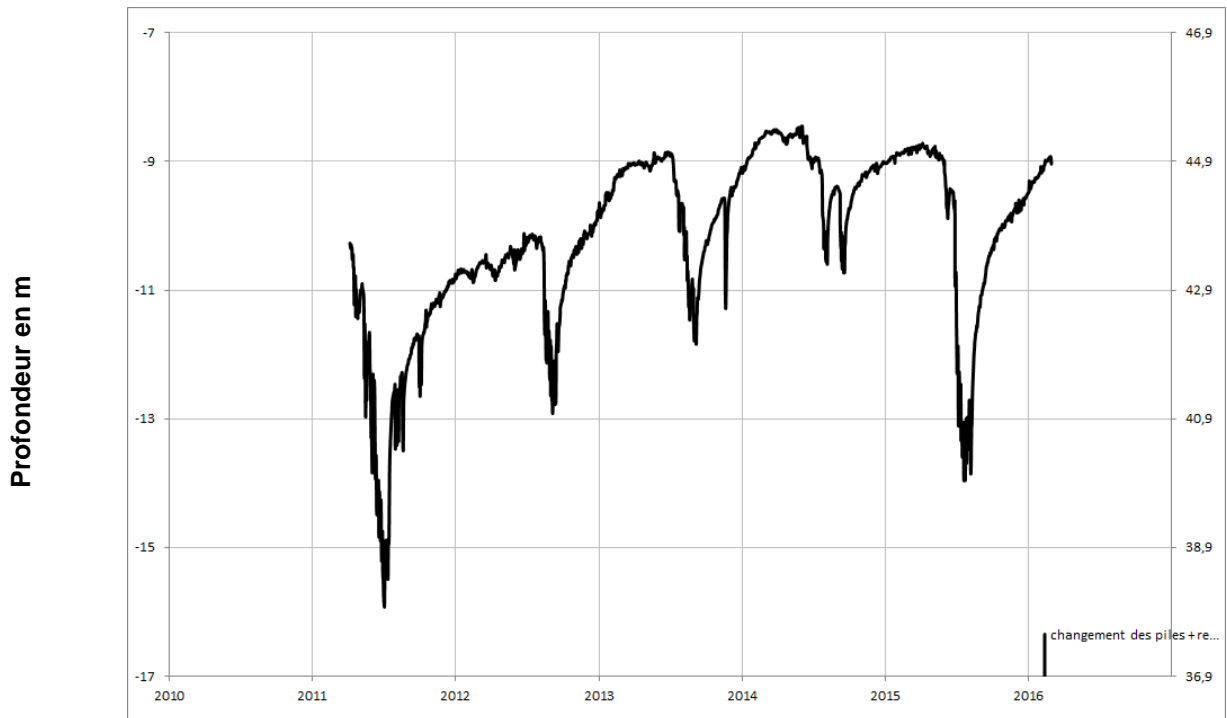
### FONTAINE MILON 04552X0110/PZ





Cénomaniens (sables)

## VERNOIL-LE-FOURRIER 04565X0077/PZ1

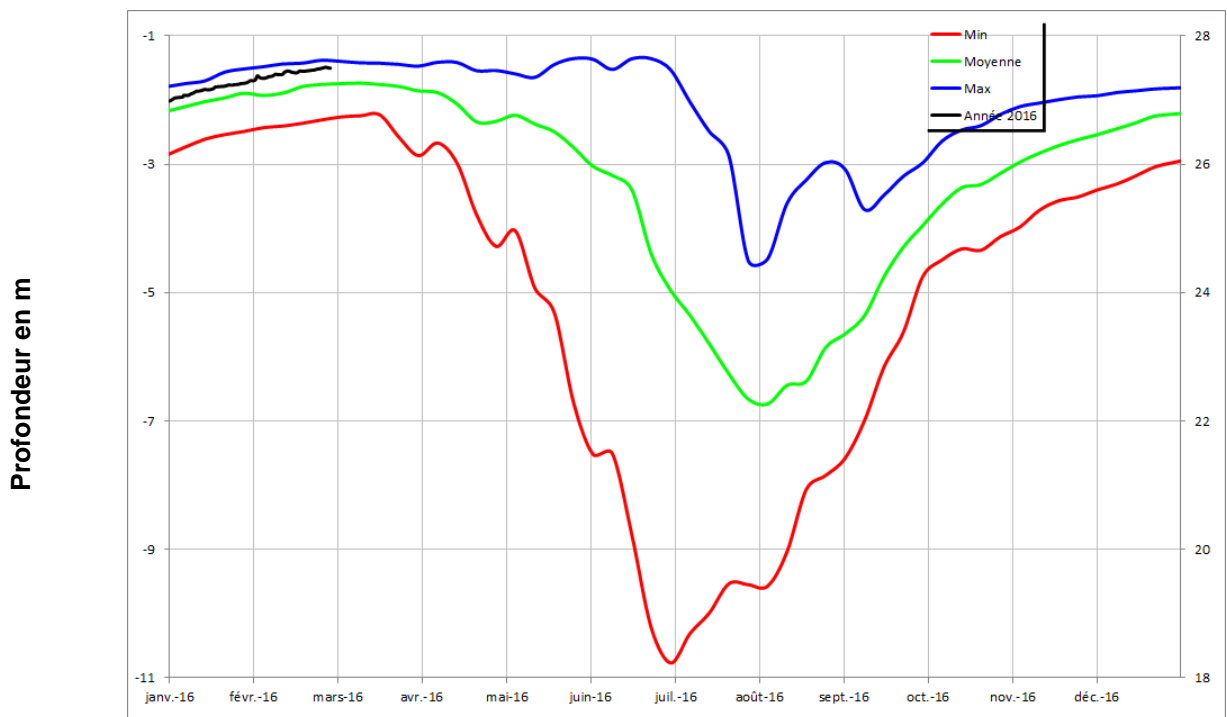
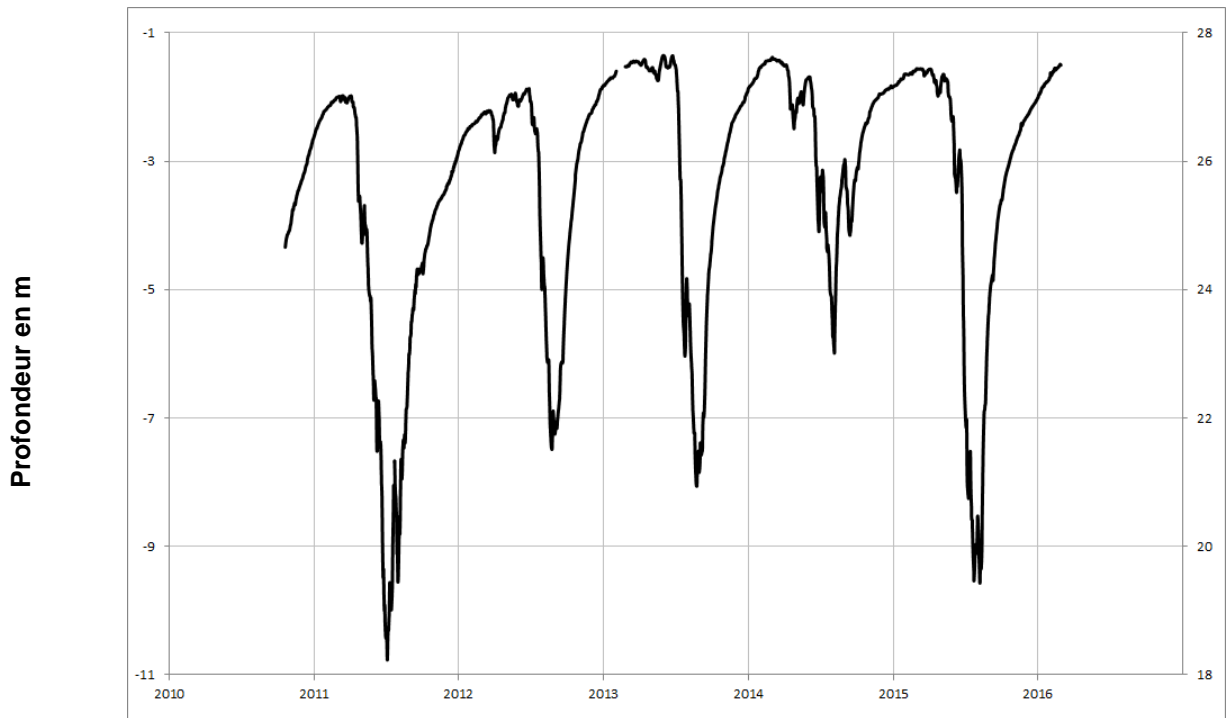






Cénomaniens (sables)

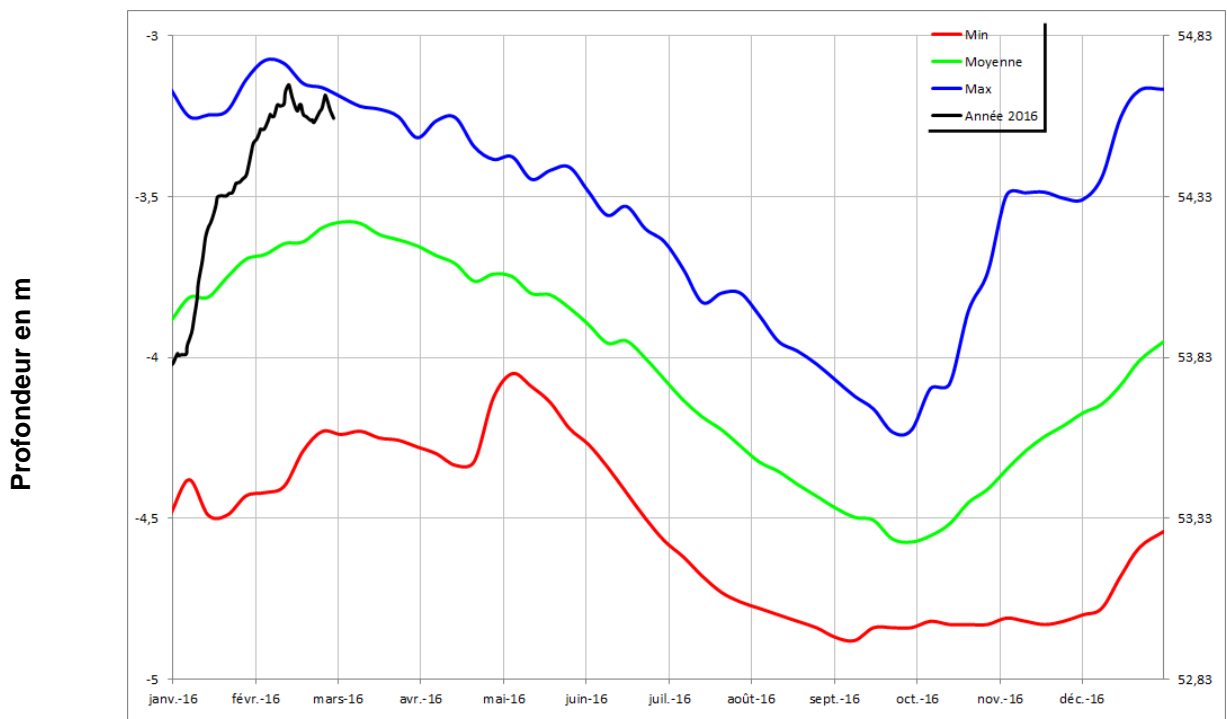
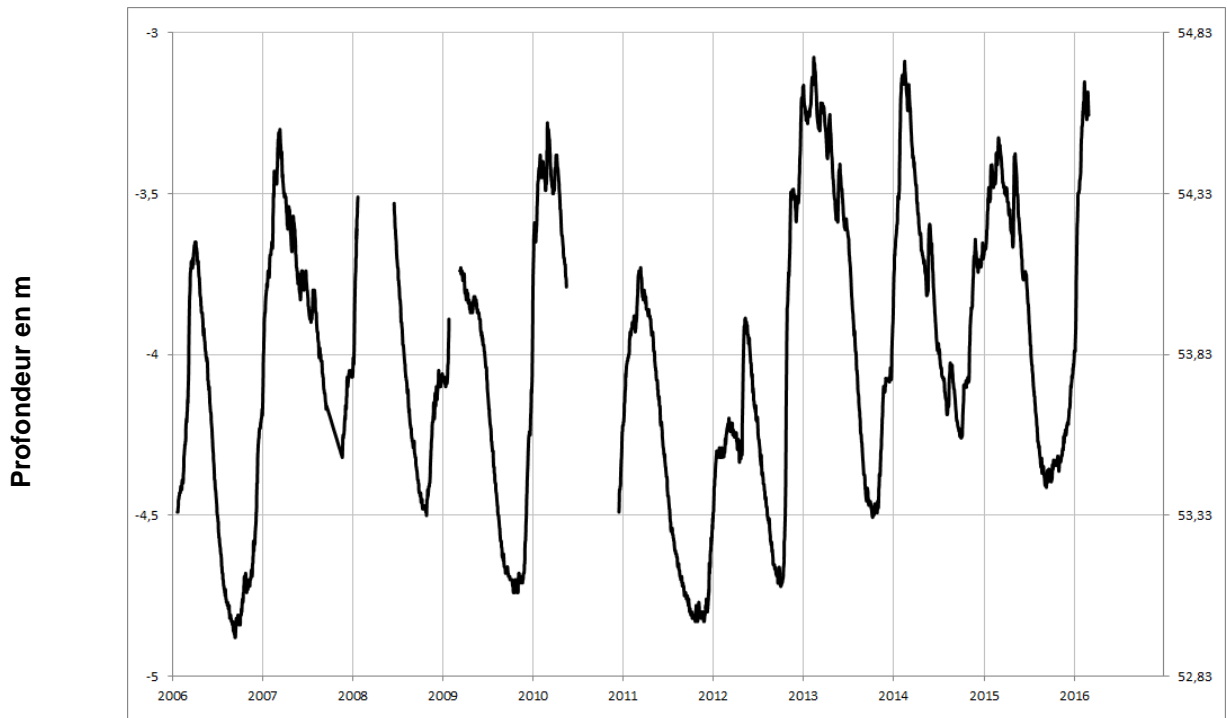
**VIVY**  
**04854X0282/PZ**





Cénomaniens (sables)

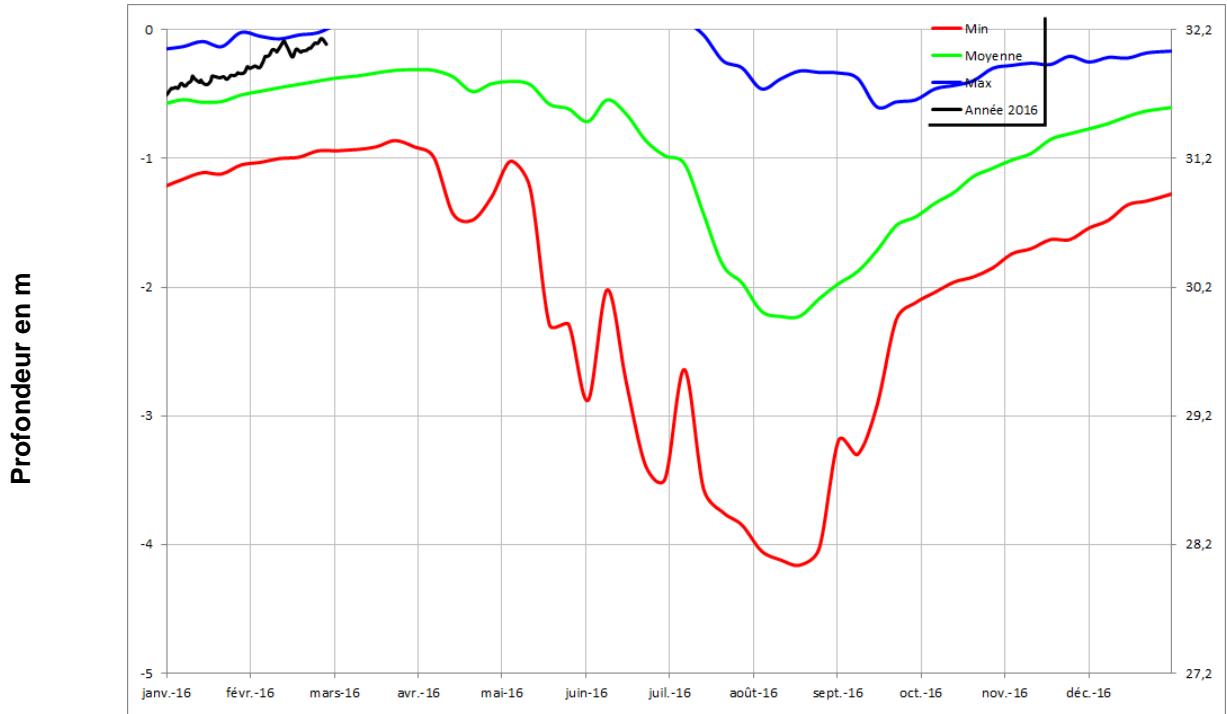
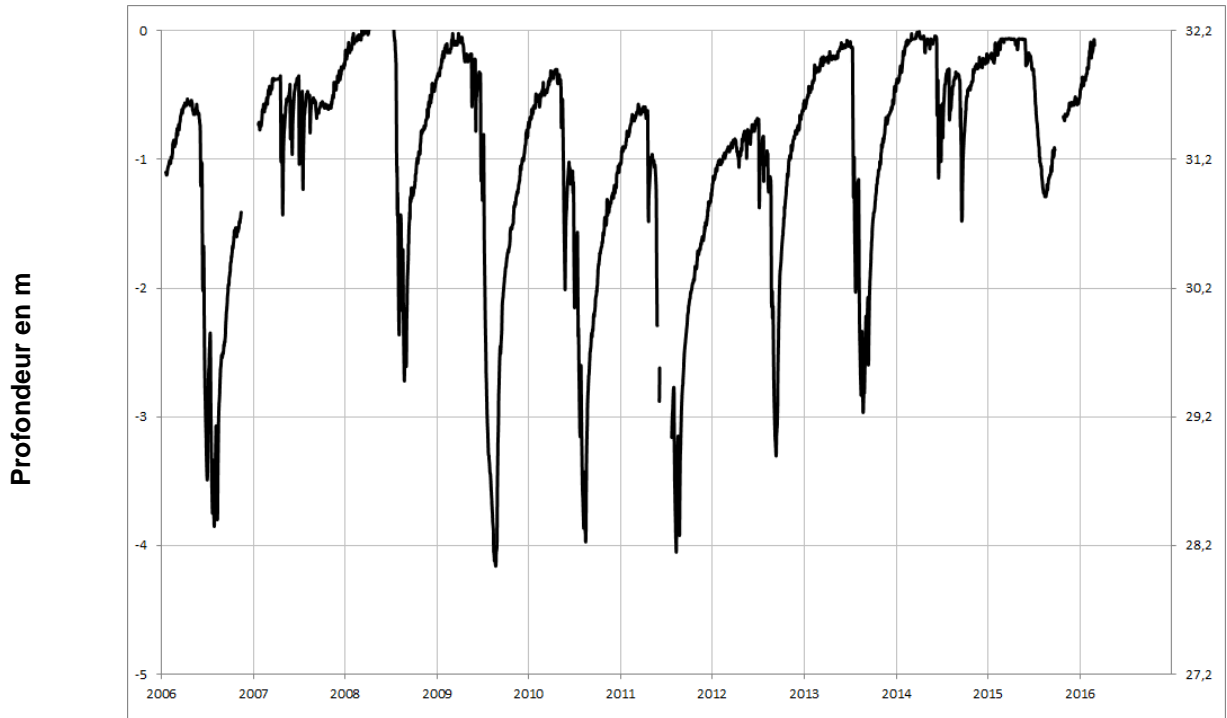
**DOUE LA FONTAINE**  
**04855X0077/PZ**





Cénomaniens (sables)

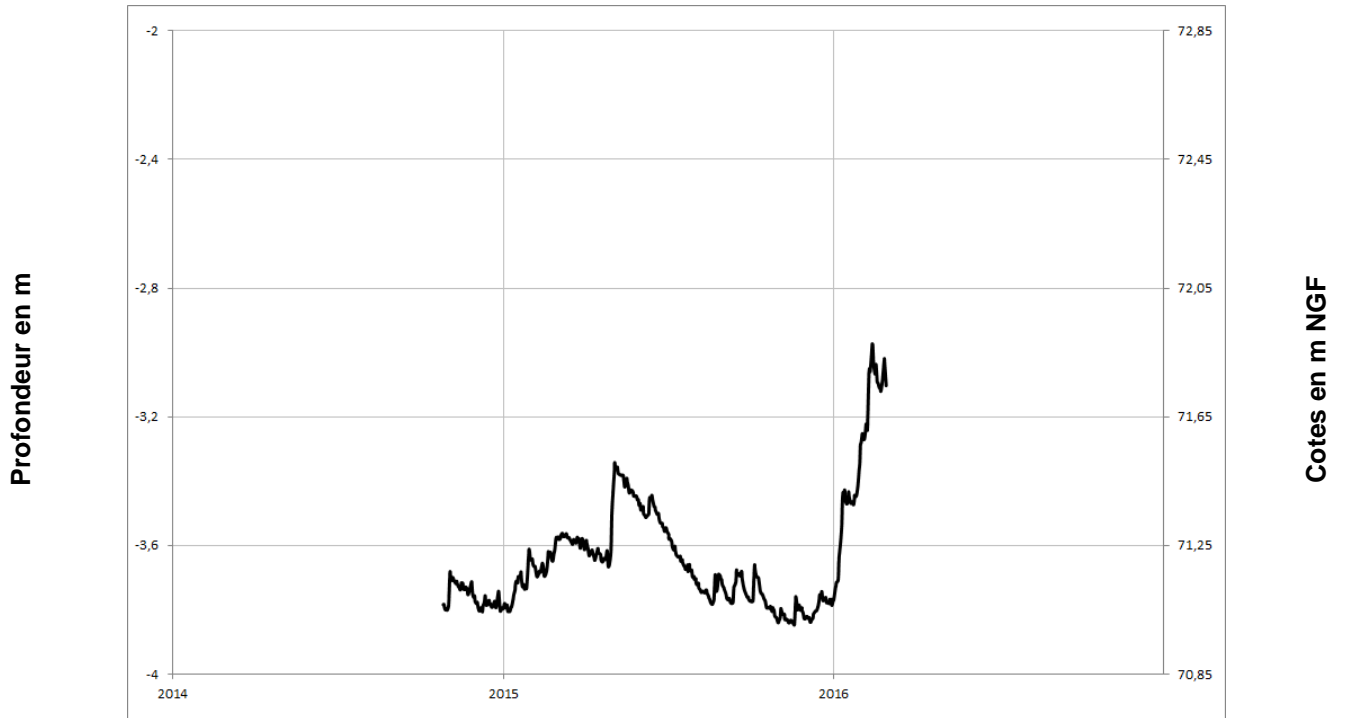
**COUDRAY MACOUARD**  
**04857X0024/F1993**





Cénomaniens (sables)

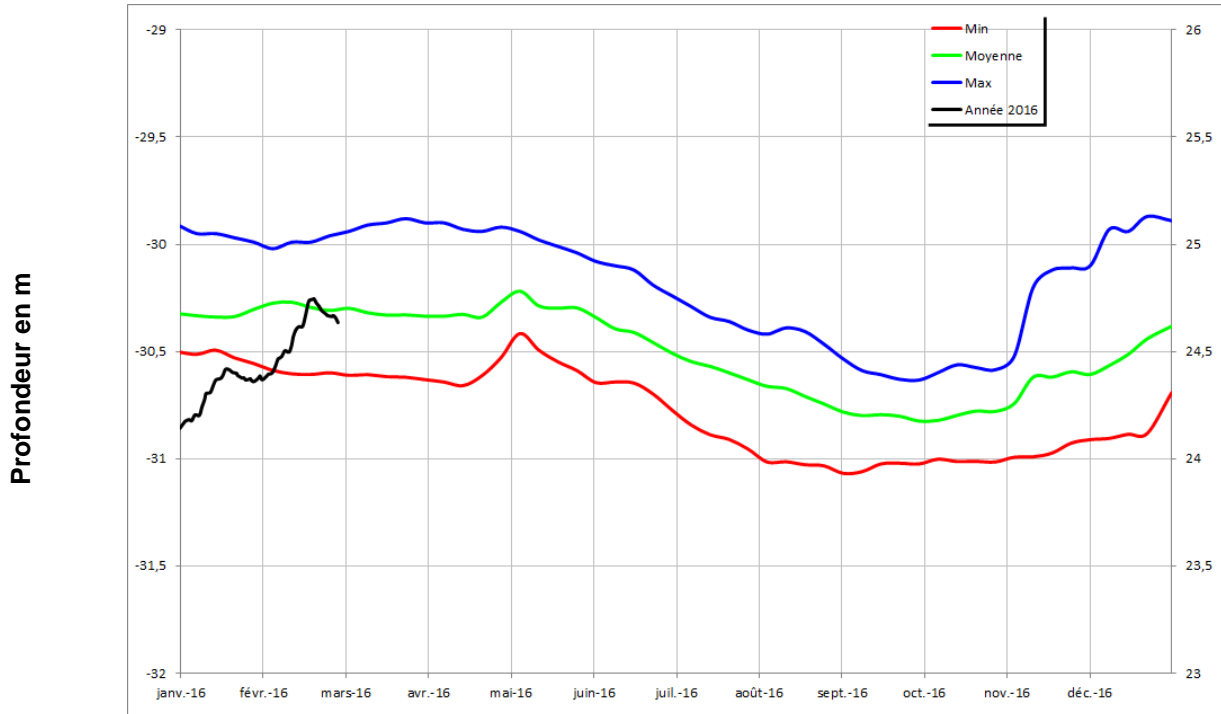
### CHAVAGNES 04844X0081/PZ





Cénomaniens (sables)

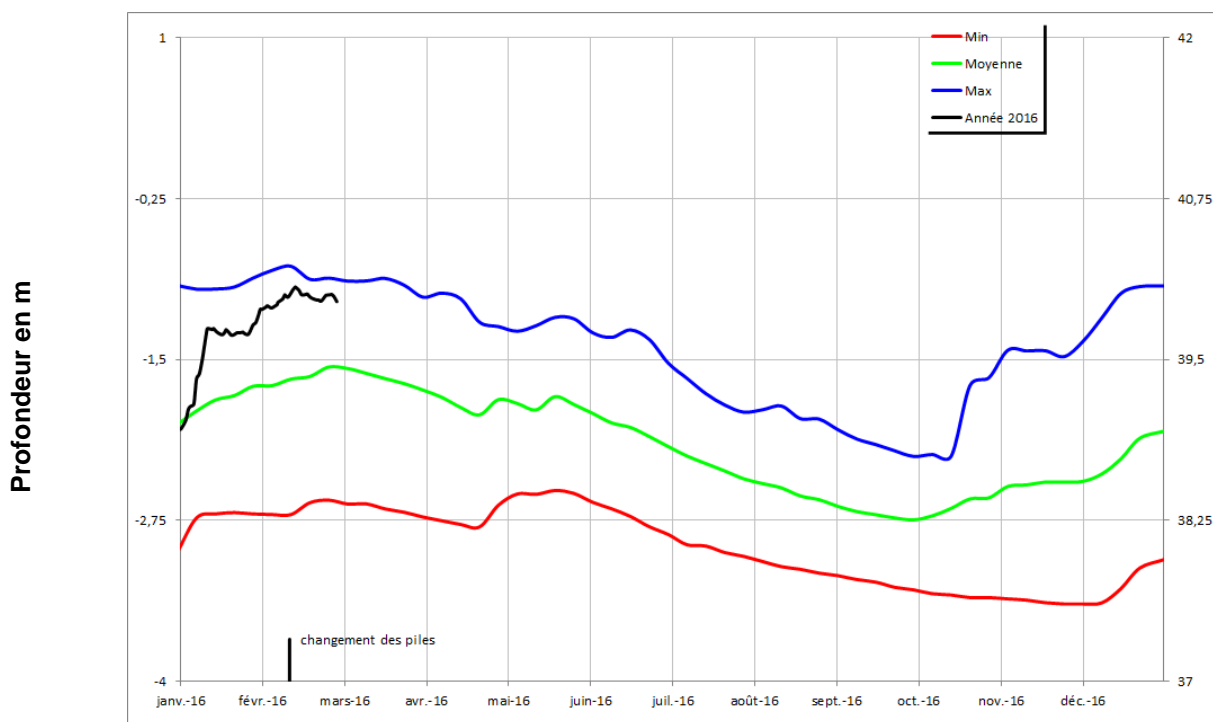
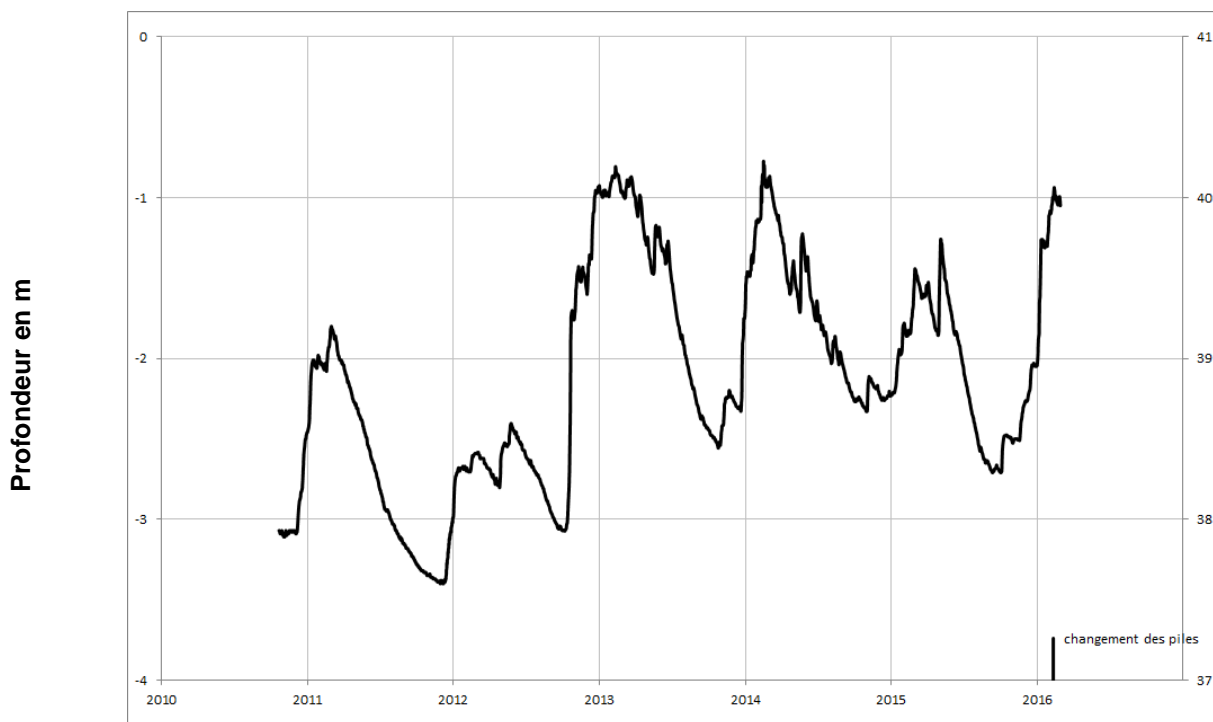
**SOUZAY**  
**04858X0135/PZ**





Jurassique (calcaires)

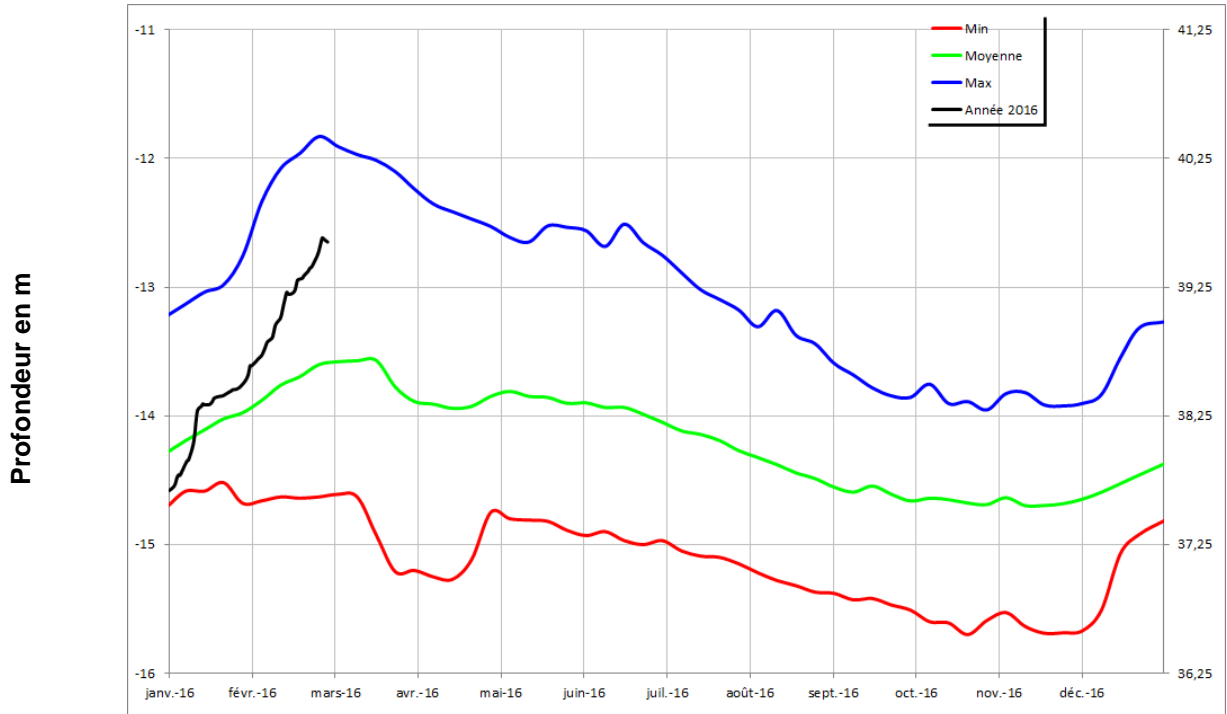
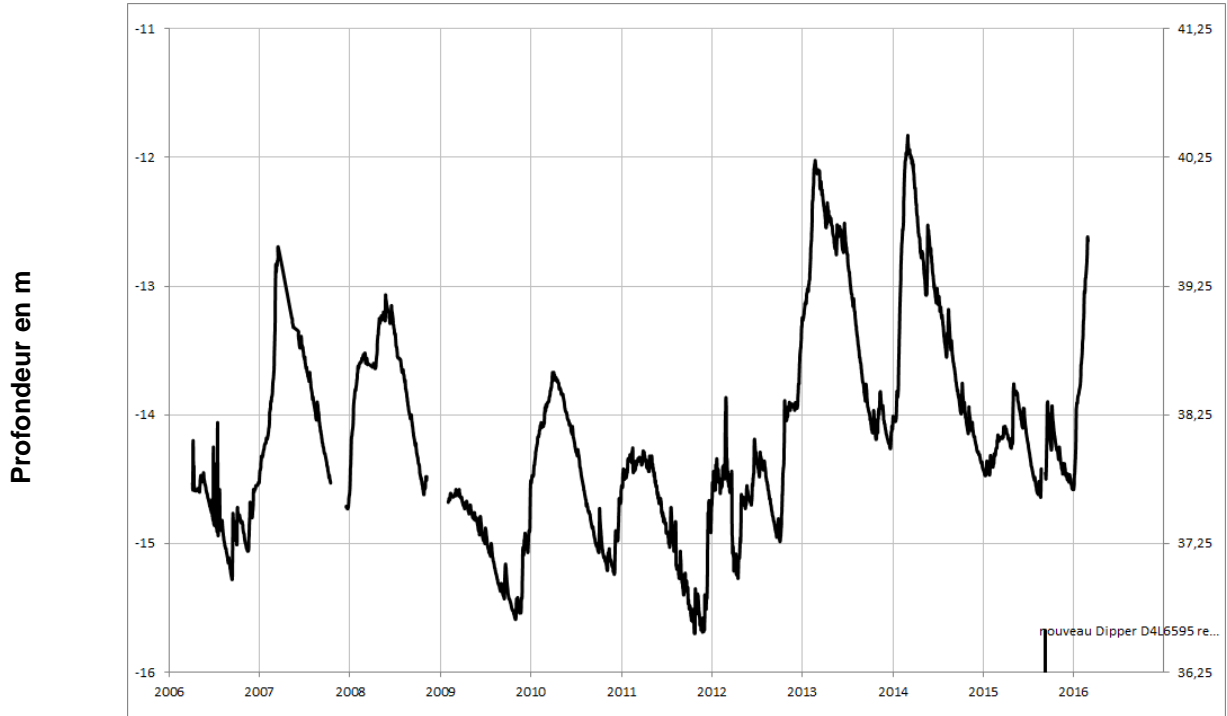
### FONTAINE MILON 04552X0111/PZ





Jurassique (calcaires)

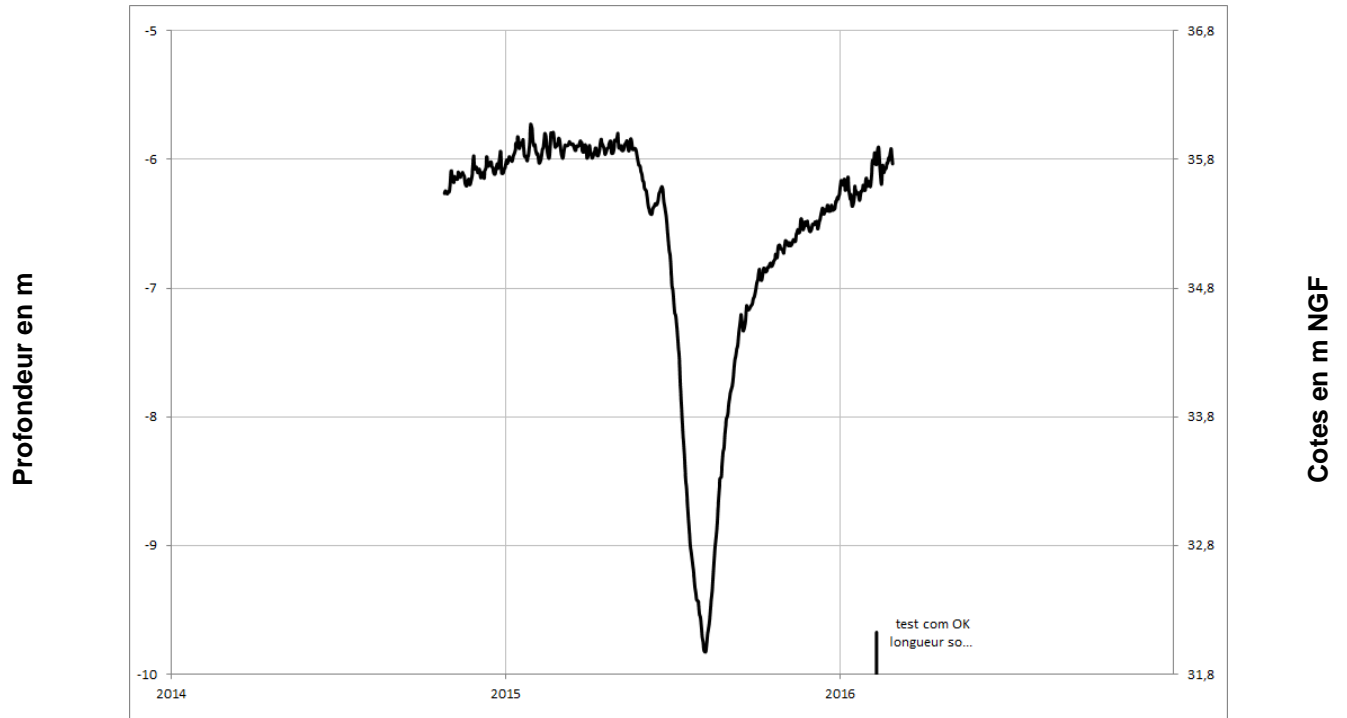
**MONTREUIL-BELLAY**  
**05123X0545/PZ**





Jurassique (calcaires)

### LONGUE-JUMELLES 04554X0030/PZ

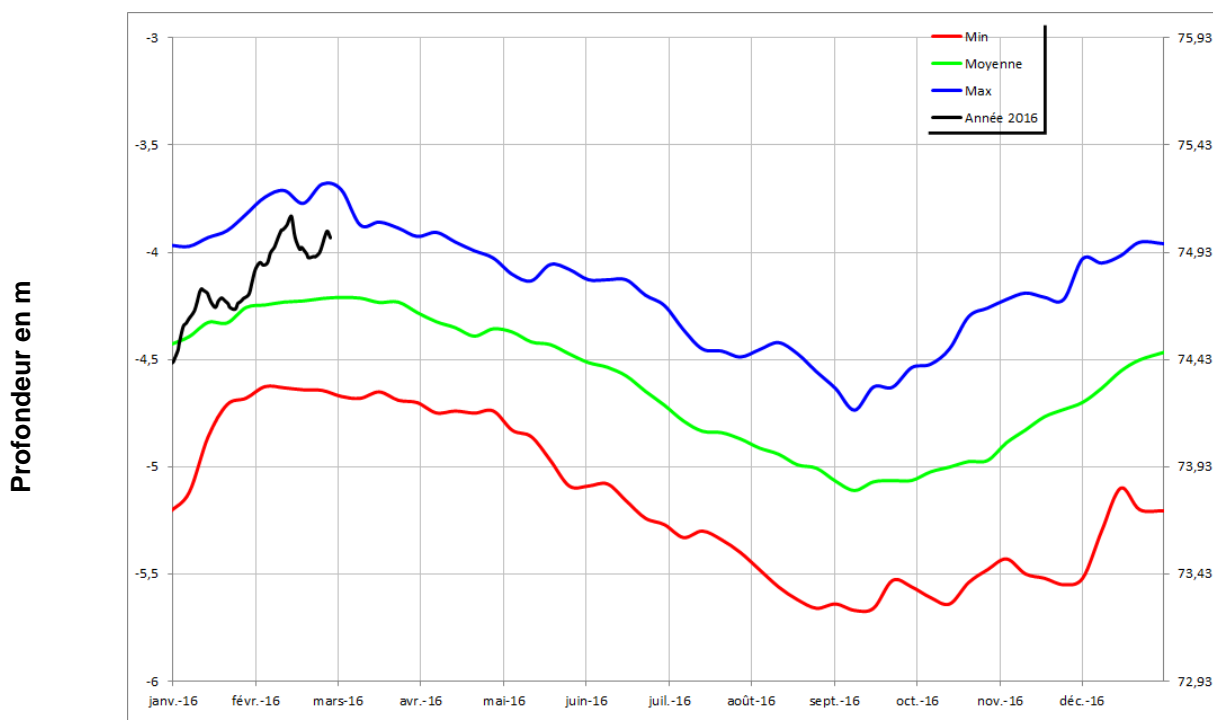
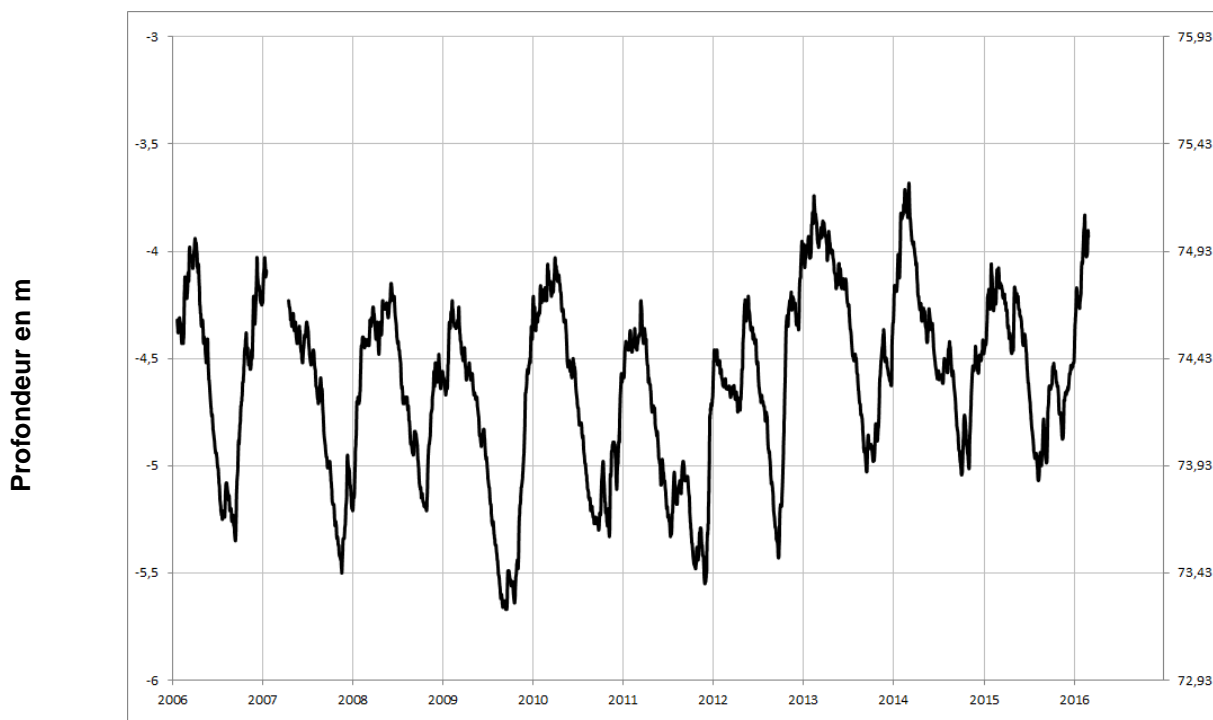






Socle

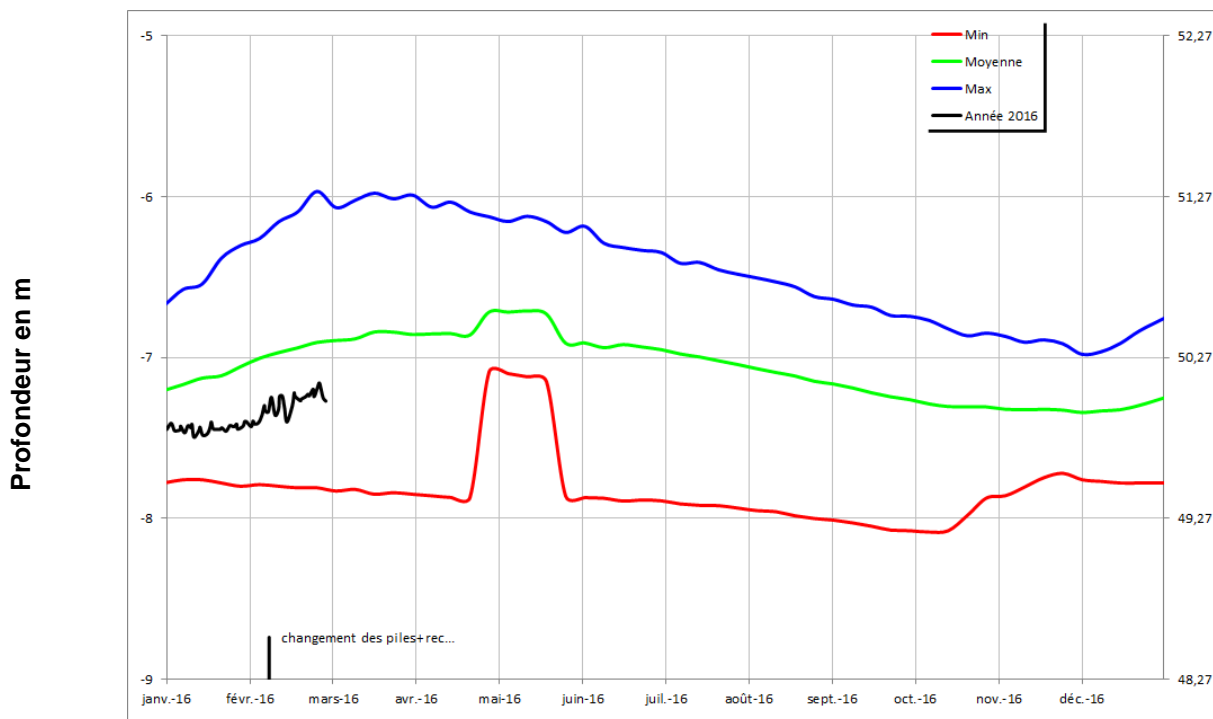
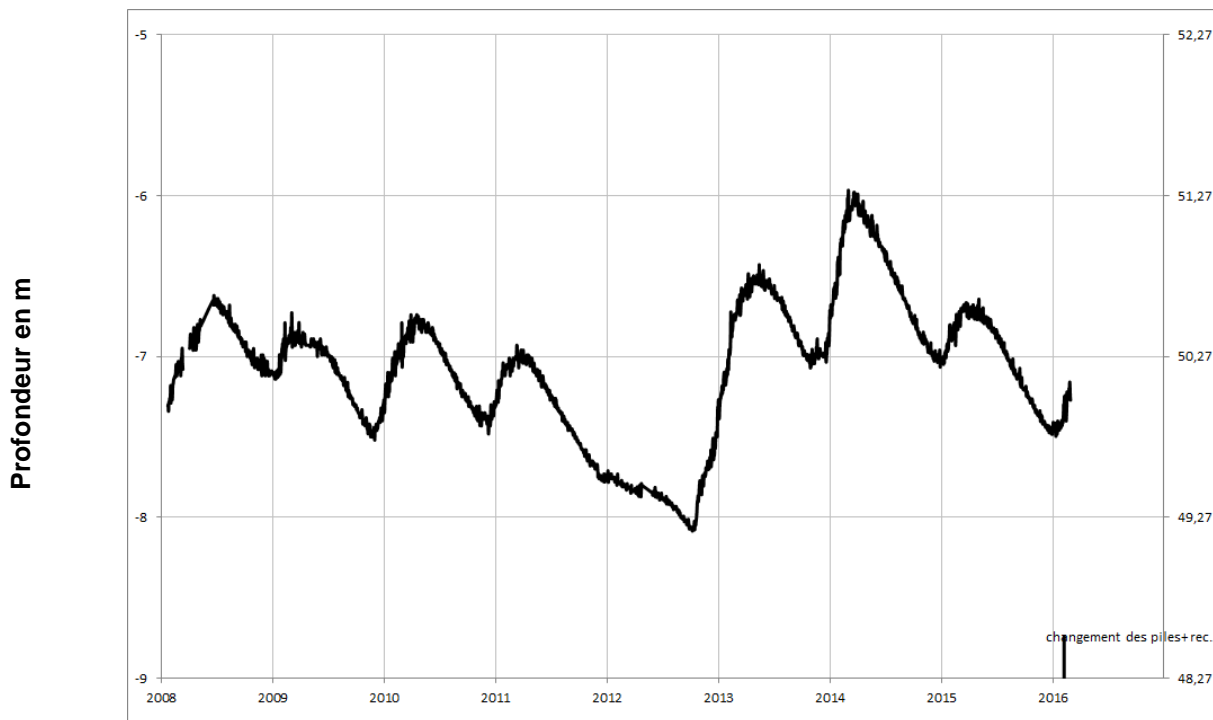
## CHEMILLE 04838X0175/PZ





Socle

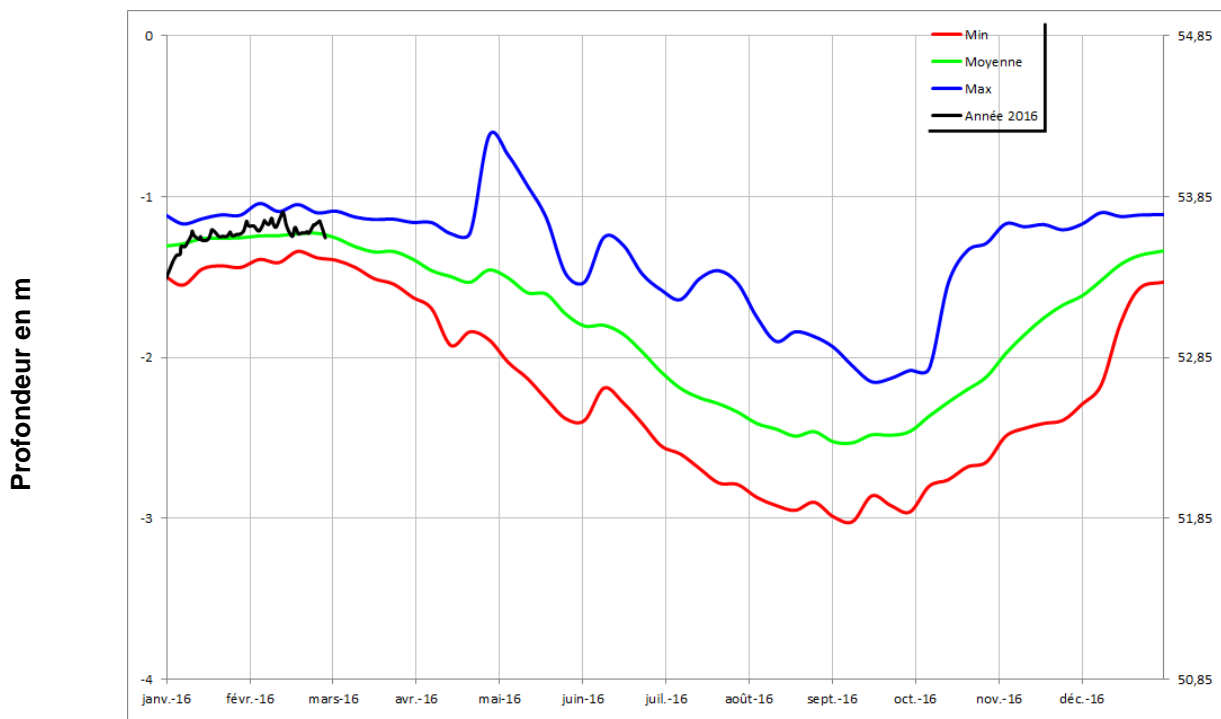
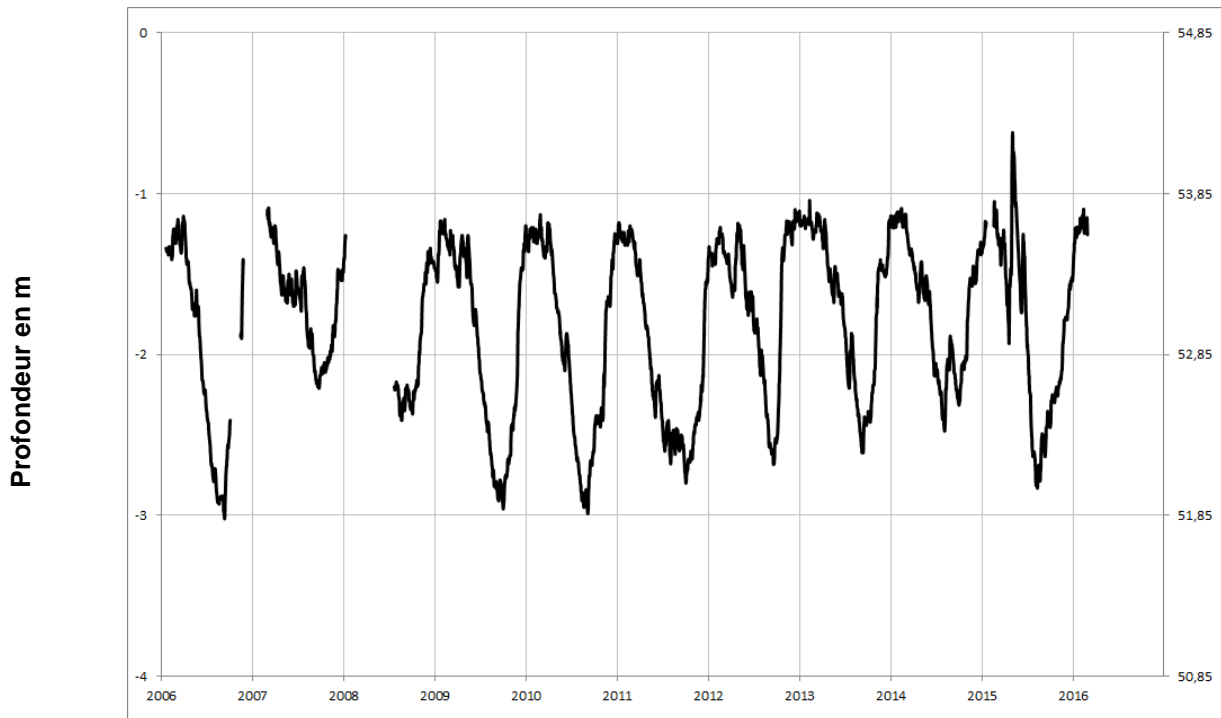
### NOYANT LA GRAVOYERE 04222X0108/PZ





Socle

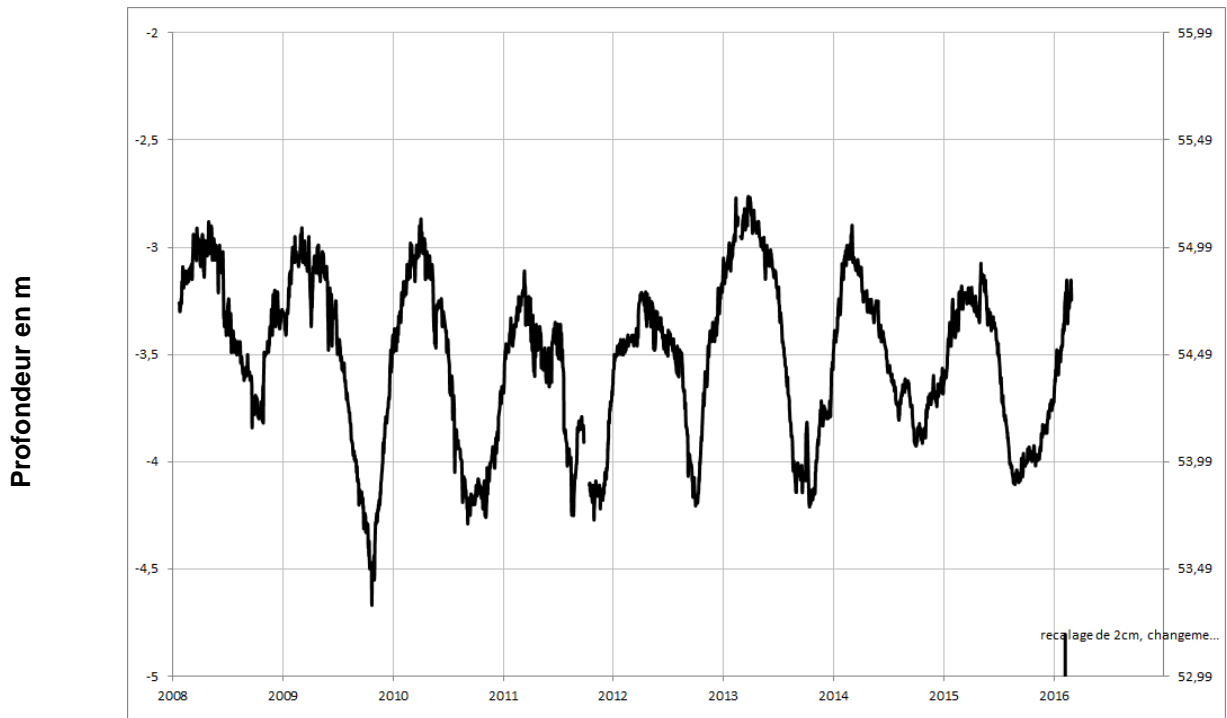
## LA CORNUAILLE 04532X0051/PZ





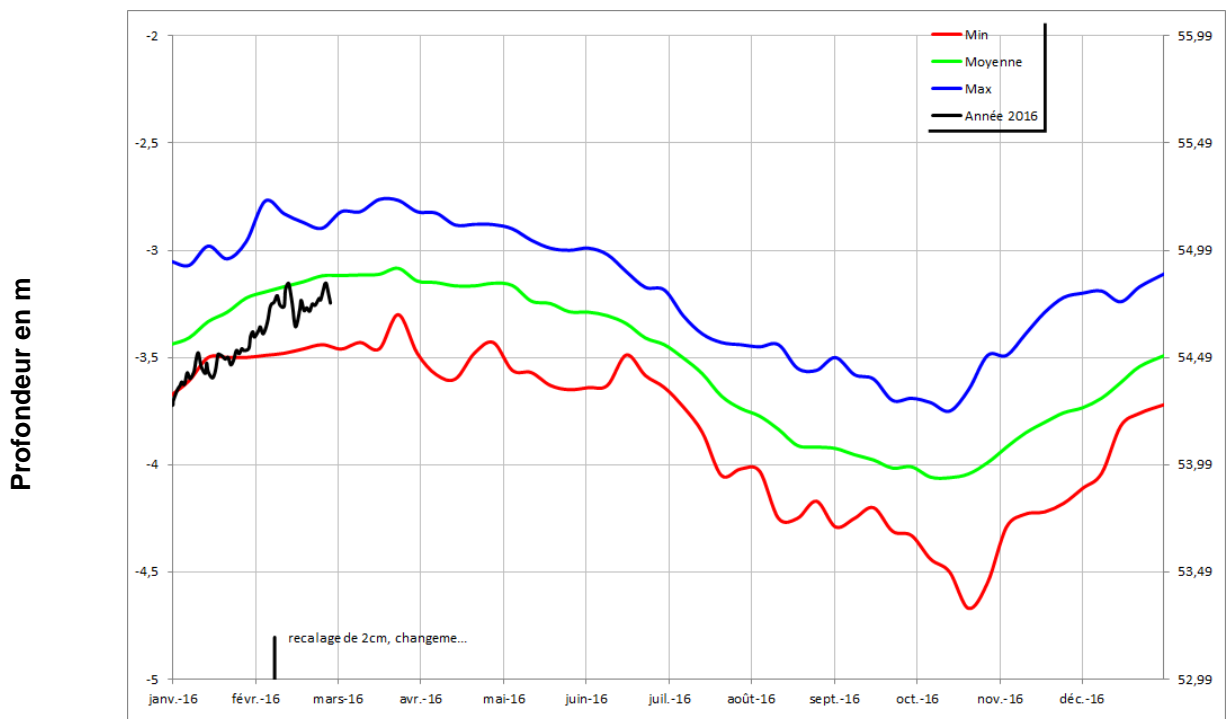
Socle

### SAINT LAMBERT LA POTHERIE 04541X0016/PZ



Profondeur en m

Cotes en m NGF



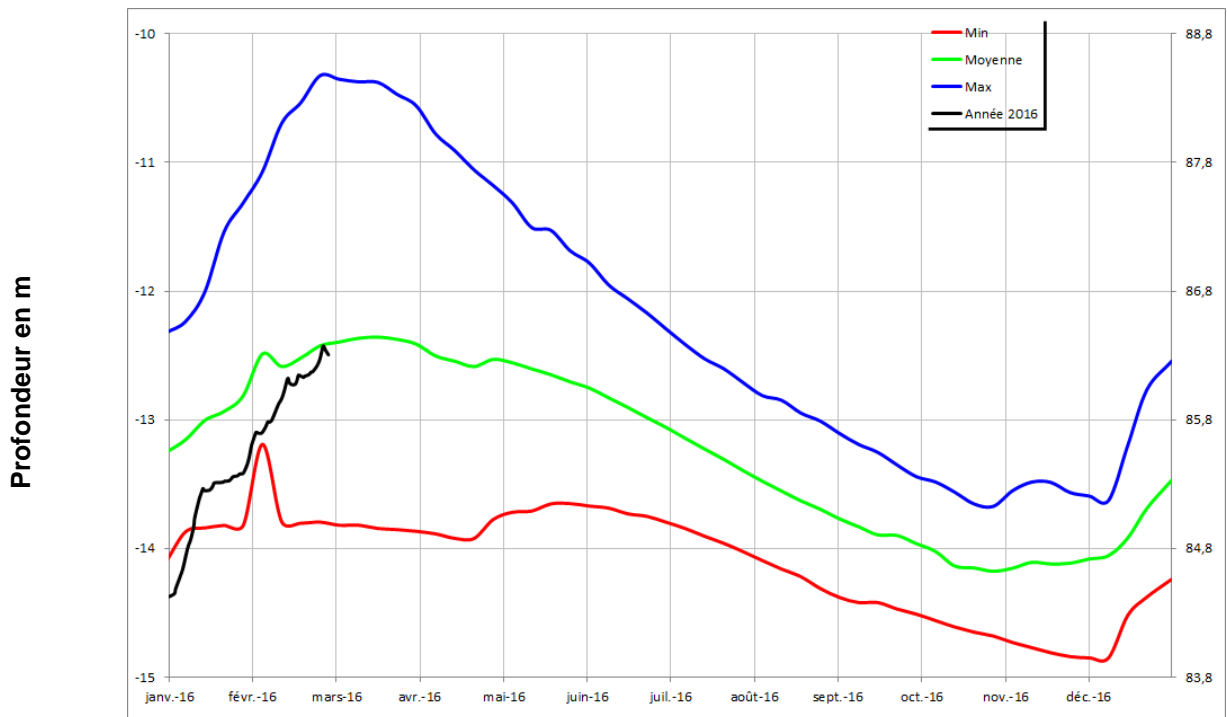
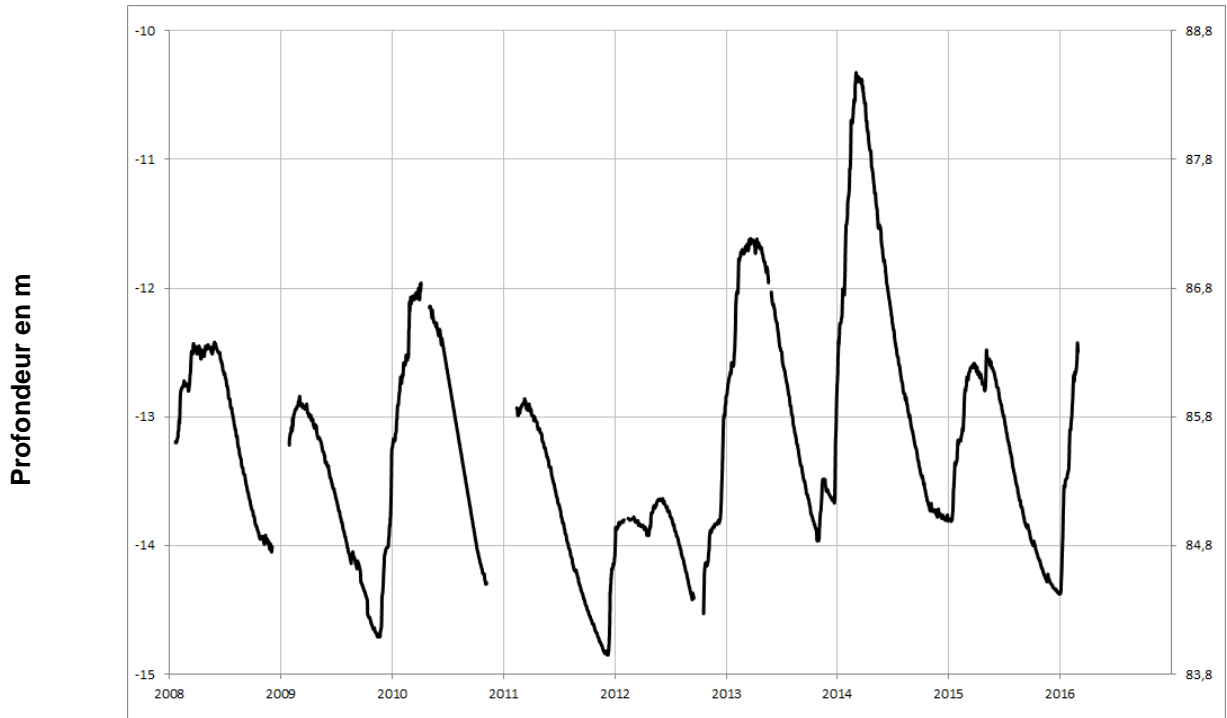
Profondeur en m

Cotes en m NGF



Socle

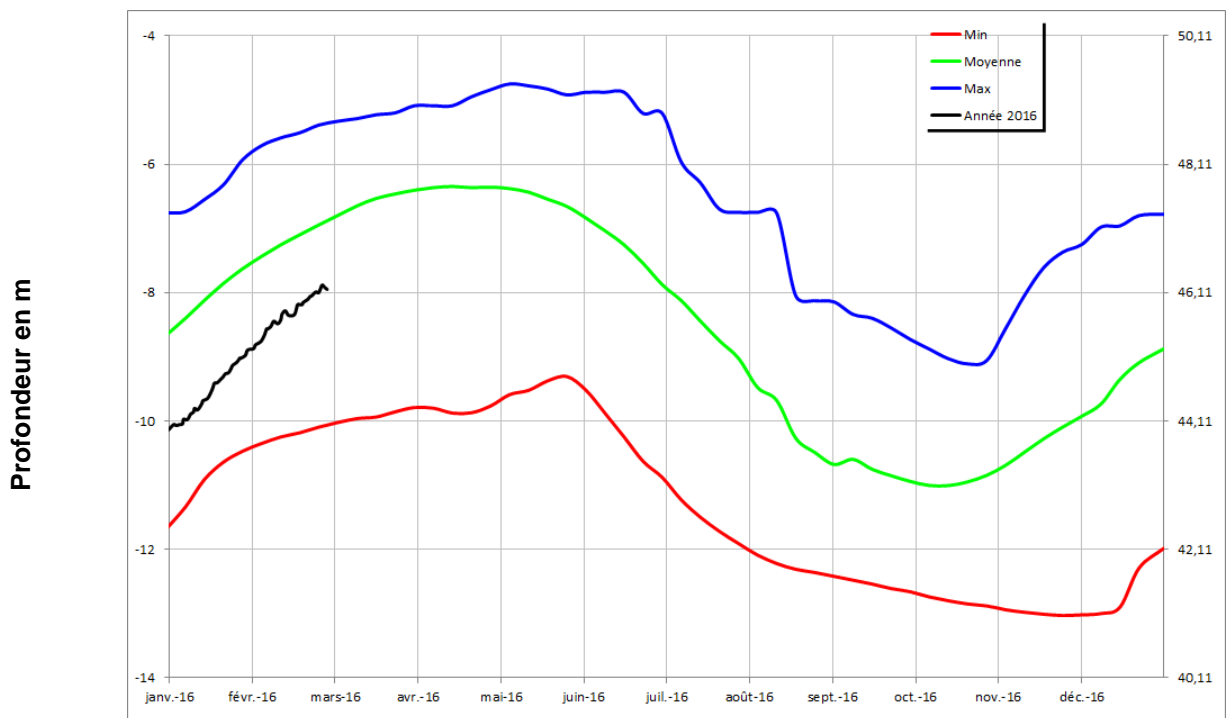
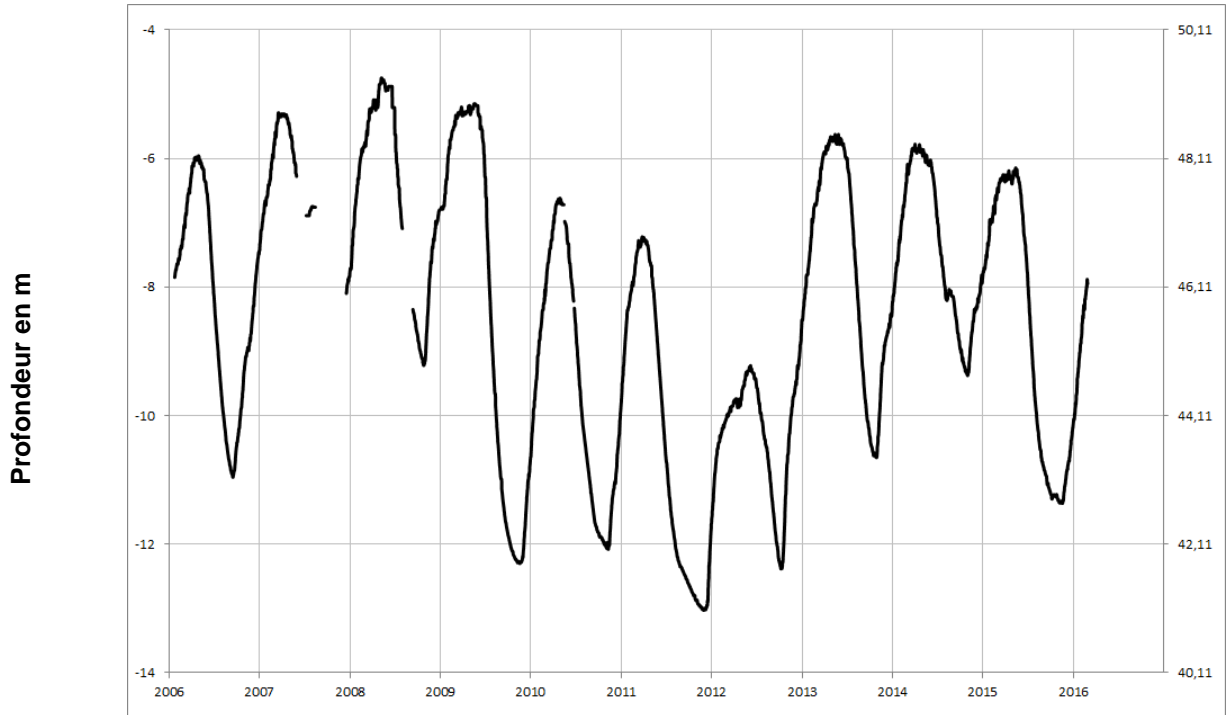
### SAINT PIERRE MONTLIMART 04831X0035/PZ





Socle

**CHAMPTEUSSE-SUR-BACONNE**  
**04231X0089/PZ**





Socle

### SAINT MACAIRE EN MAUGES 05101X0129/PZ

