

Département : Maine-et-Loire (49)

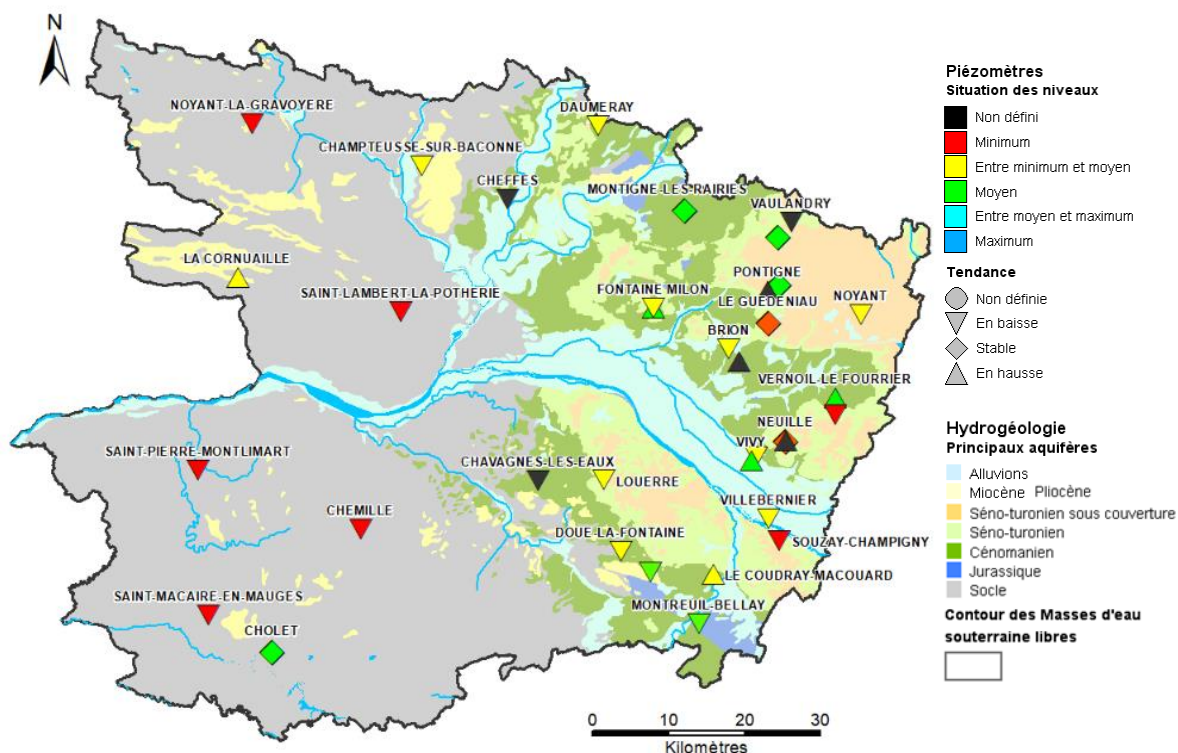
Date : 1^{er} novembre 2017

Le BRGM – Service Géologique Régional des Pays de la Loire – gère depuis 2003 le réseau de suivi piézométrique patrimonial du département du Maine-et-Loire.

Depuis fin octobre 2014, ce réseau comporte 33 ouvrages répartis de manière à suivre les aquifères majeurs à l'échelle départementale et ceux, plus localisés, qui présentent un enjeu particulier (faluns du Miocène, calcaires du Bathonien-Jurassique). 2 ouvrages supplémentaires sont depuis peu intégrés au réseau pour le suivi de l'aquifère Cénomaniens (partie captive).

Les données issues de ce réseau sont par ailleurs mises à disposition et téléchargeables sur le site internet public www.adès.eaufrance.fr. ADES est la banque nationale d'Accès aux Données sur les Eaux Souterraines.

Situation piézométrique au 1^{er} novembre 2017



En octobre, la vidange saisonnière s'est poursuivie pour l'ensemble des aquifères.

Dans les grands réservoirs sédimentaires, certains suivis montrent des niveaux piézométriques en hausse depuis août (nappe du Séno-Turonien à Pontigné et à Noyant ; nappe du Cénomaniens à Vivy, la Fontaine-Milon, Neuillé, Coudray-Macouard). Ceci ne reflète pas l'évolution naturelle des ressources mais résulte de l'effet de l'arrêt de pompages saisonniers environnants.

A début novembre, les niveaux enregistrés sont en baisse et restent partout inférieurs aux moyennes saisonnières. Les nappes de socle ainsi que les nappes sédimentaires du Cénomaniens et du Séno-Turonien (suivis non influencés) présentent des niveaux piézométriques majoritairement équivalents ou inférieurs aux minimas connus.



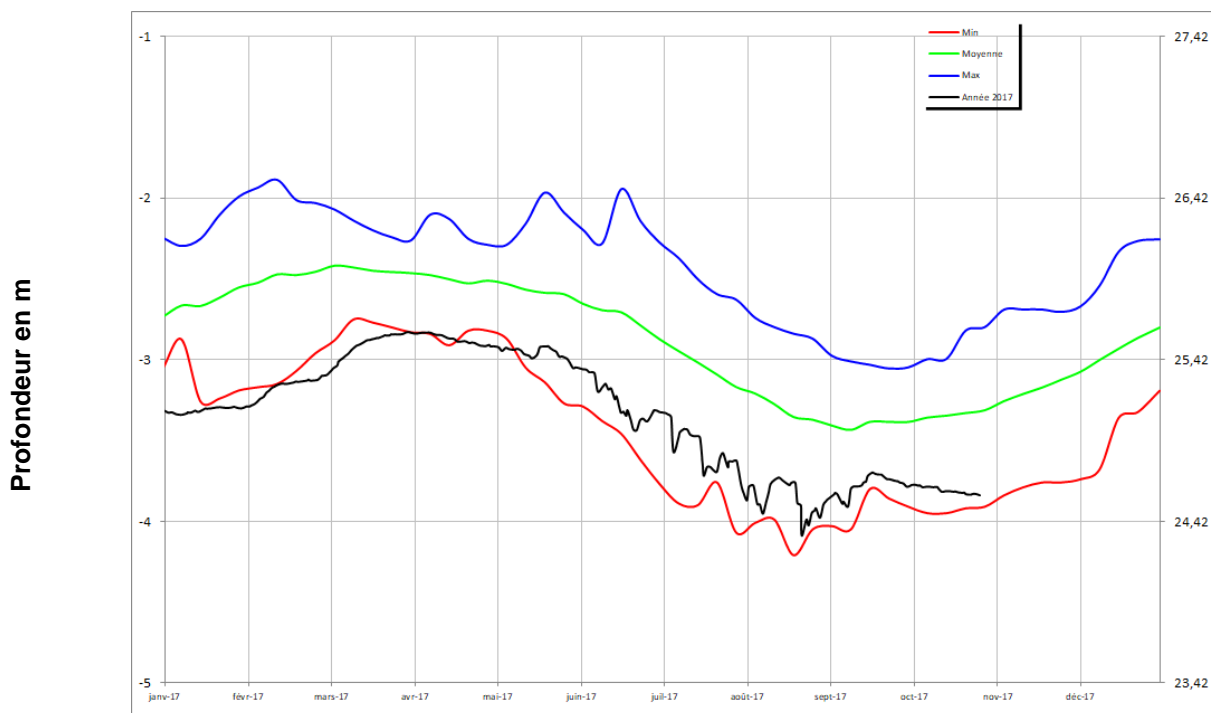
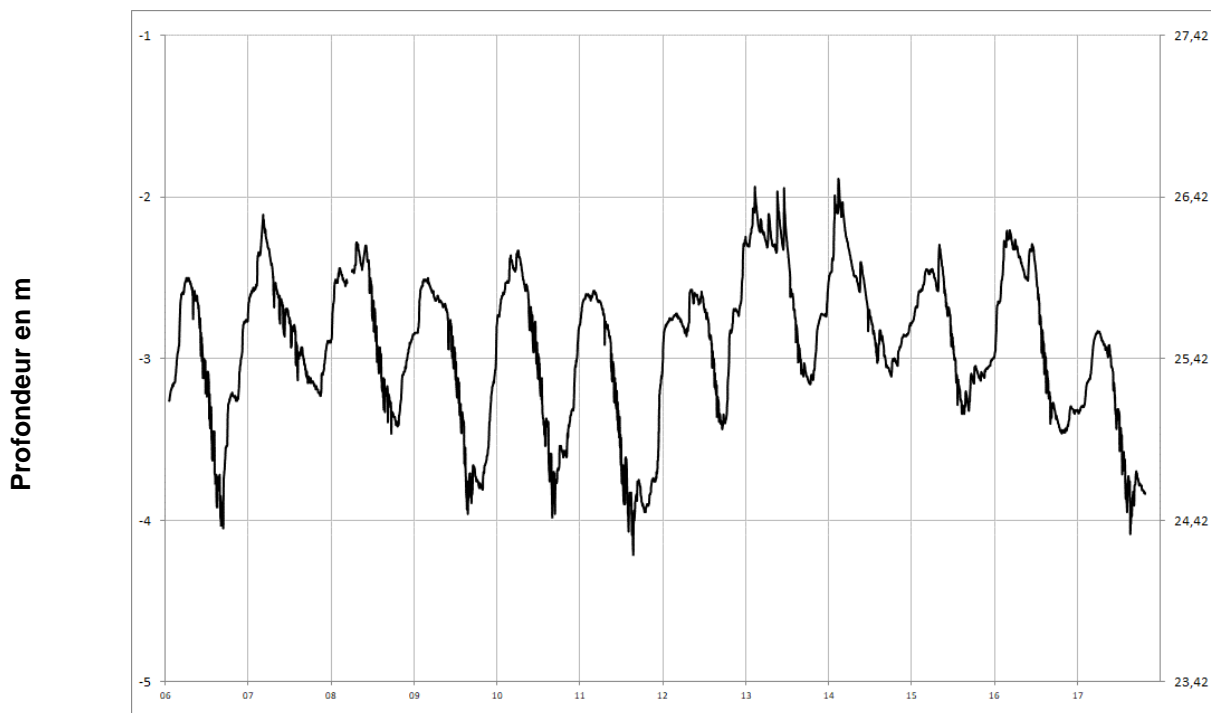
Chroniques piézométriques au 1^{er} novembre 2017

Seules les chroniques permettant d'illustrer la situation sont reportées.

L'ensemble des données de suivi de ce réseau est consultable et téléchargeable sur : www.adeseaufrance.fr.

Alluvions de la Loire

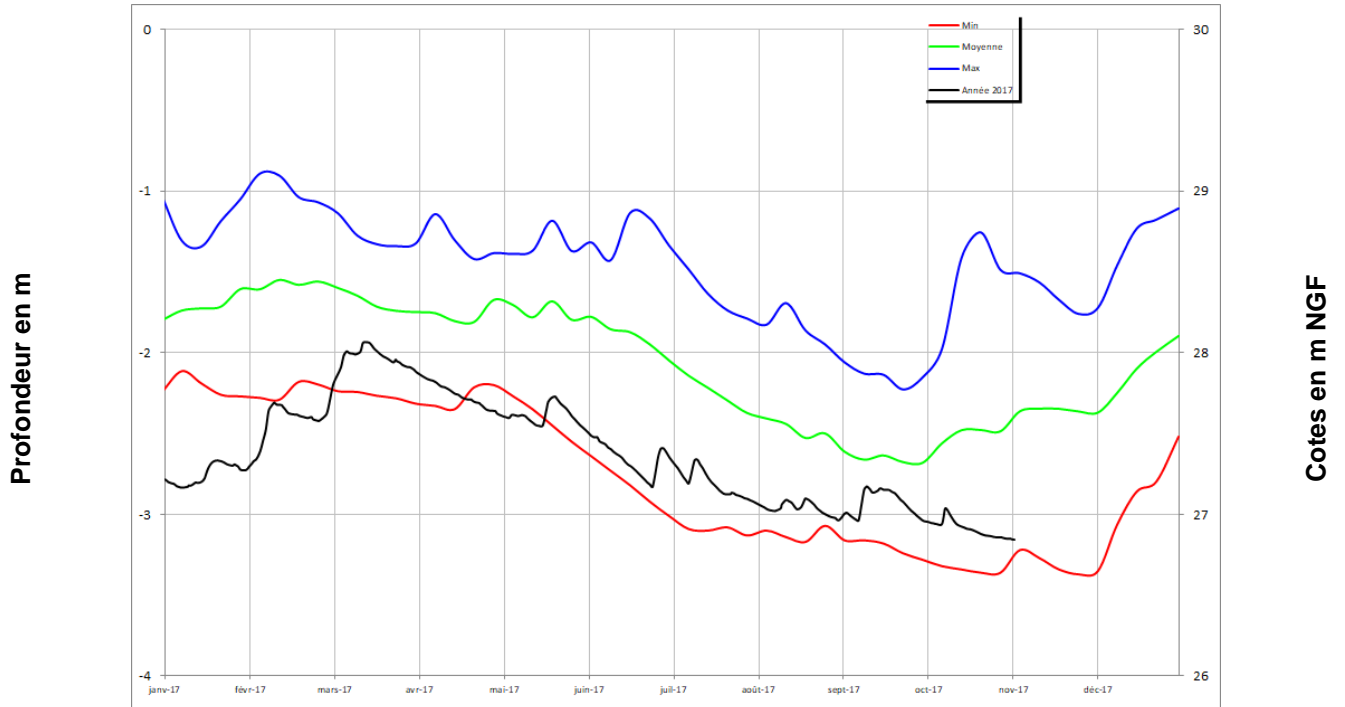
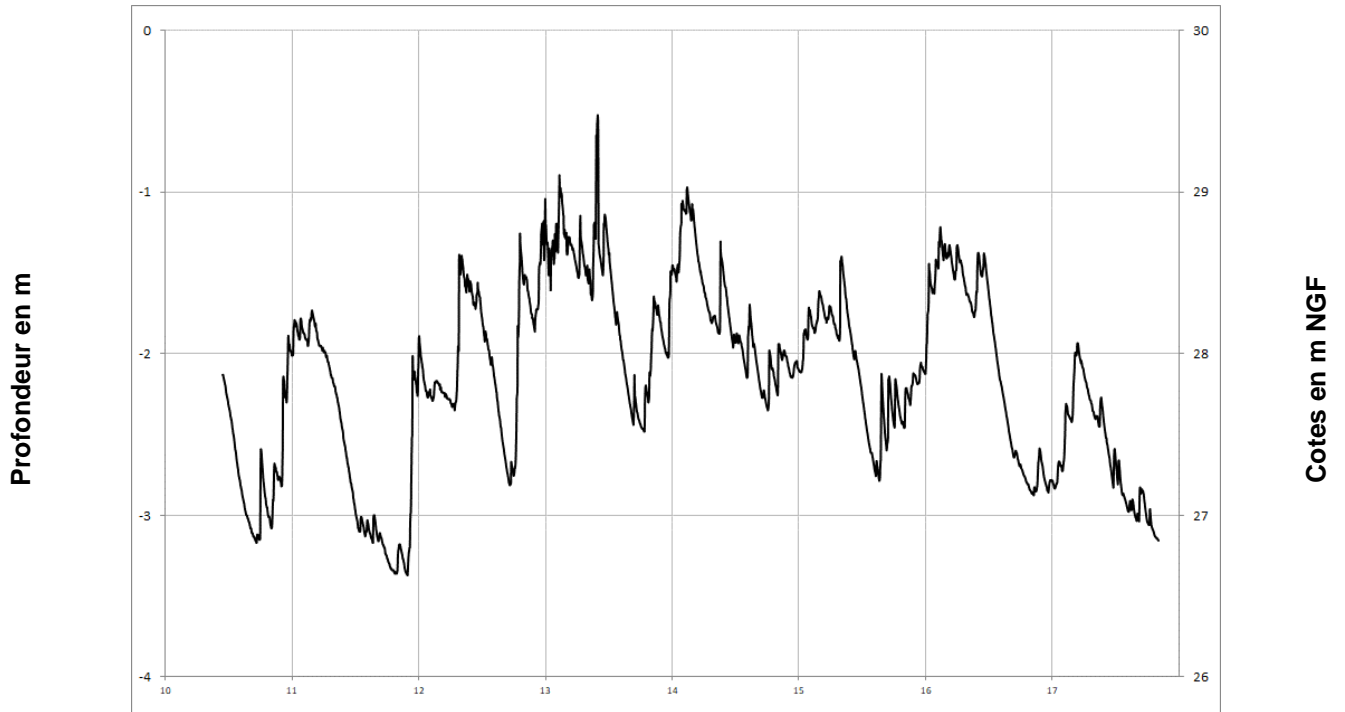
VILLEBERNIER 04854X0257/PZ





Alluvions de la Loire

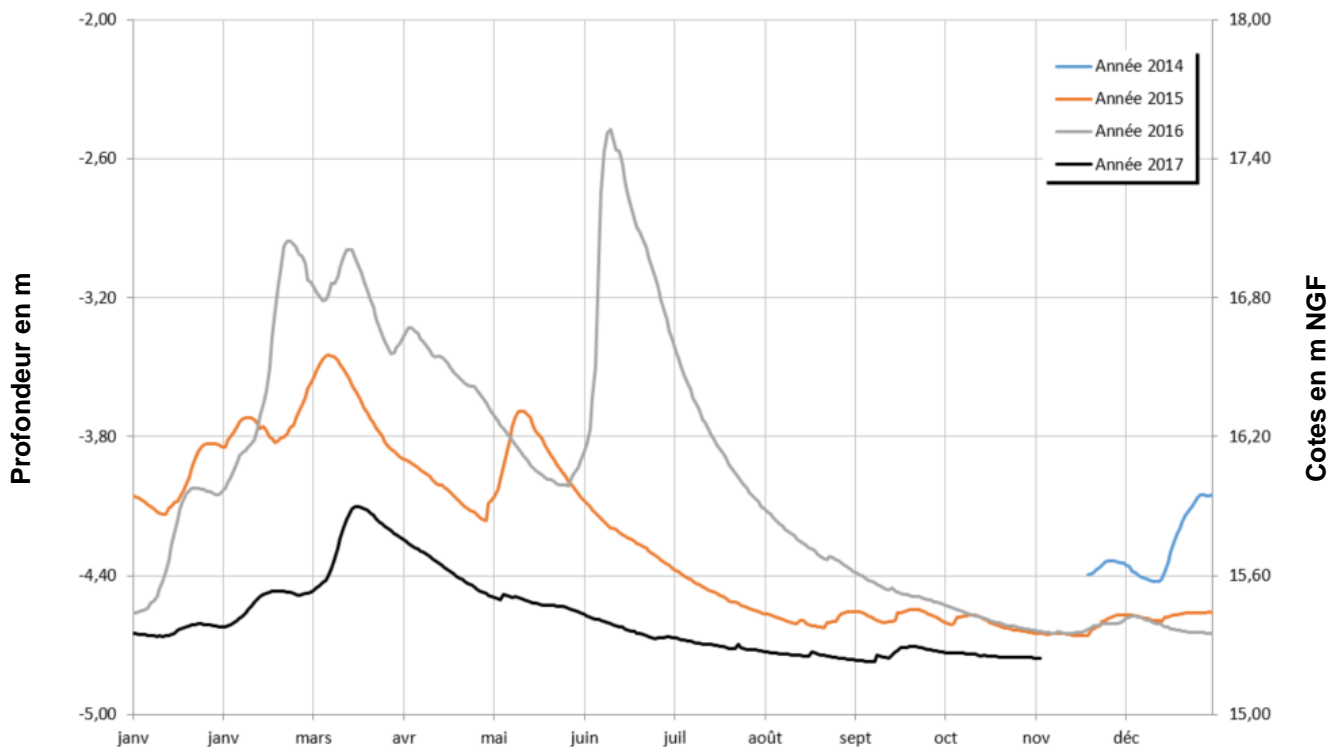
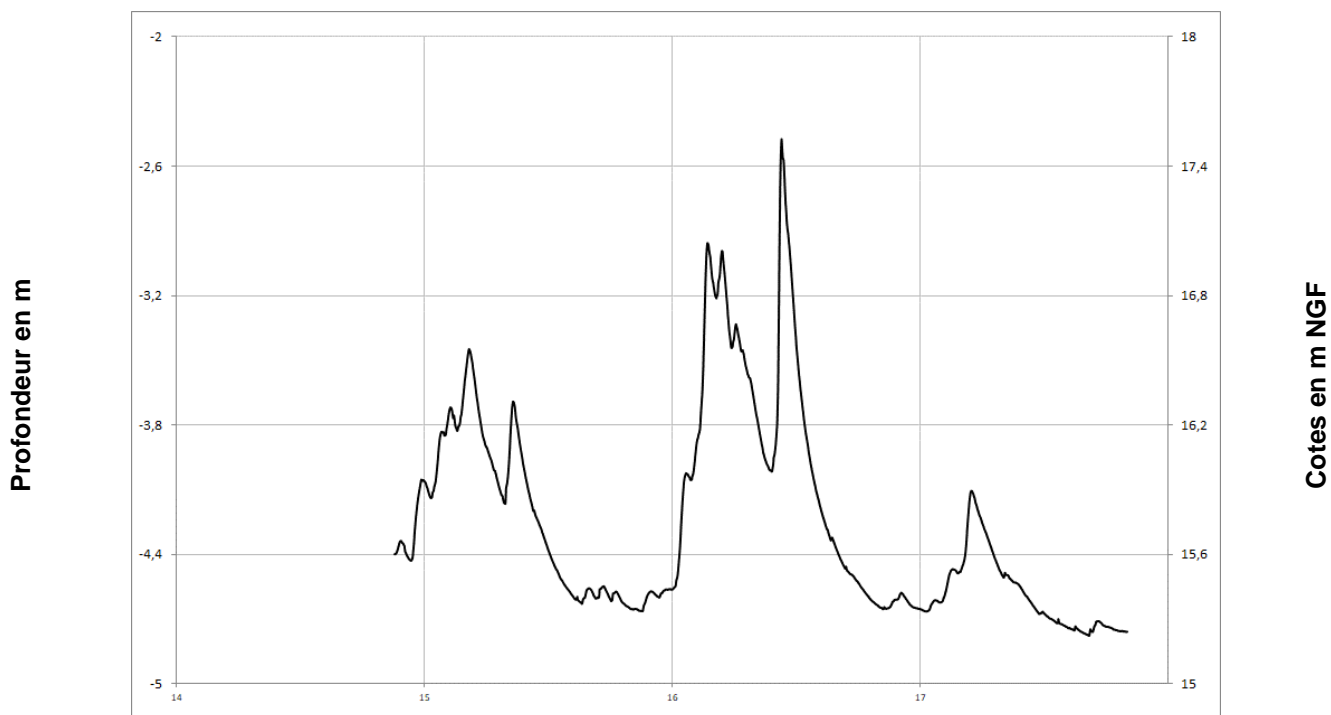
VIVY
04854X0296/P





Alluvions de la Sarthe

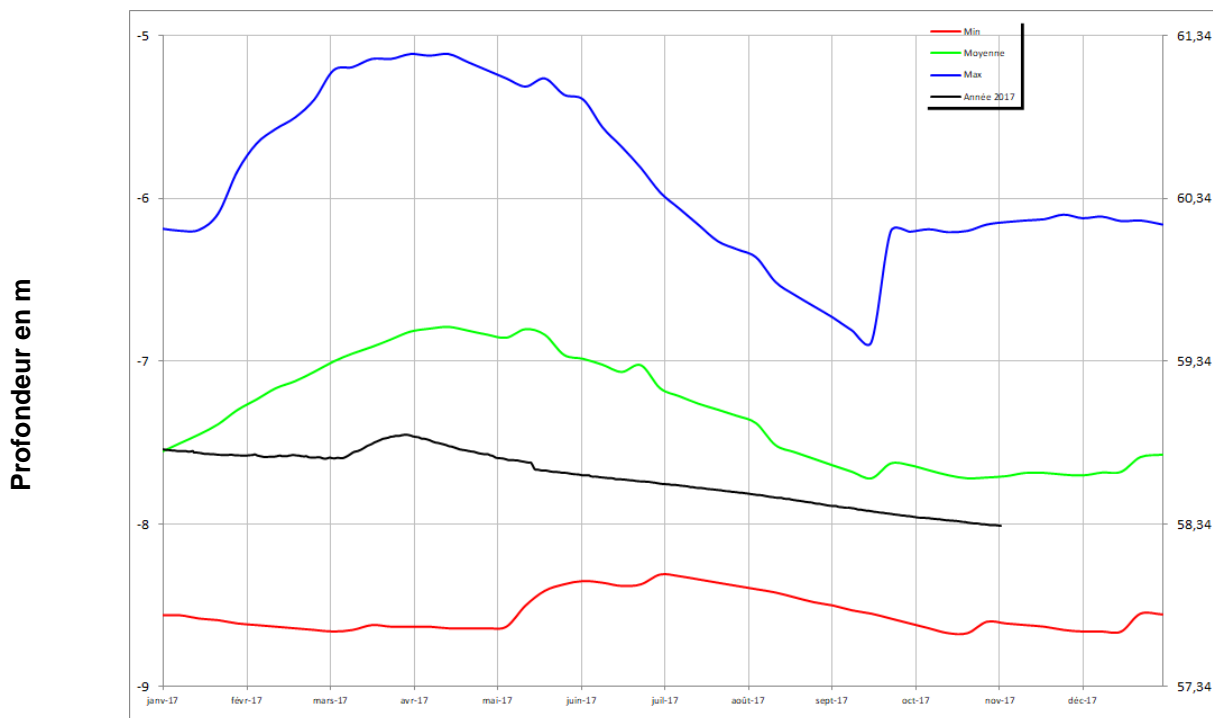
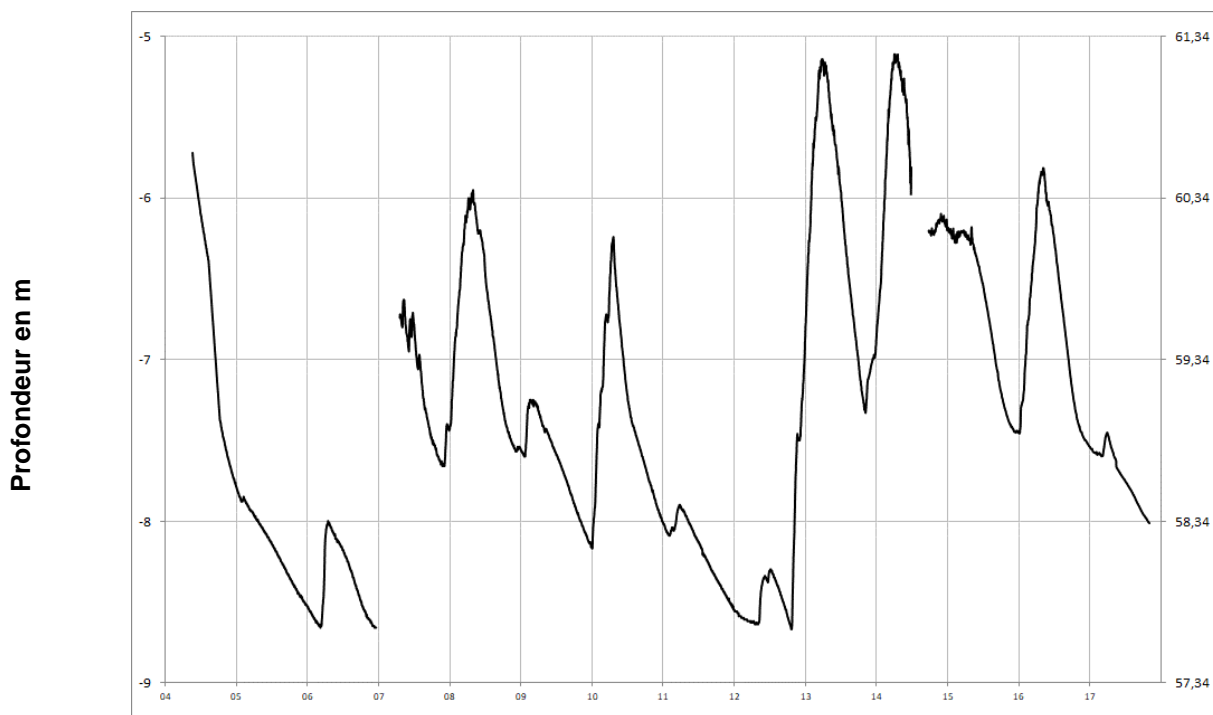
CHEFFES
04233X0066/P





Miocène (Faluns)

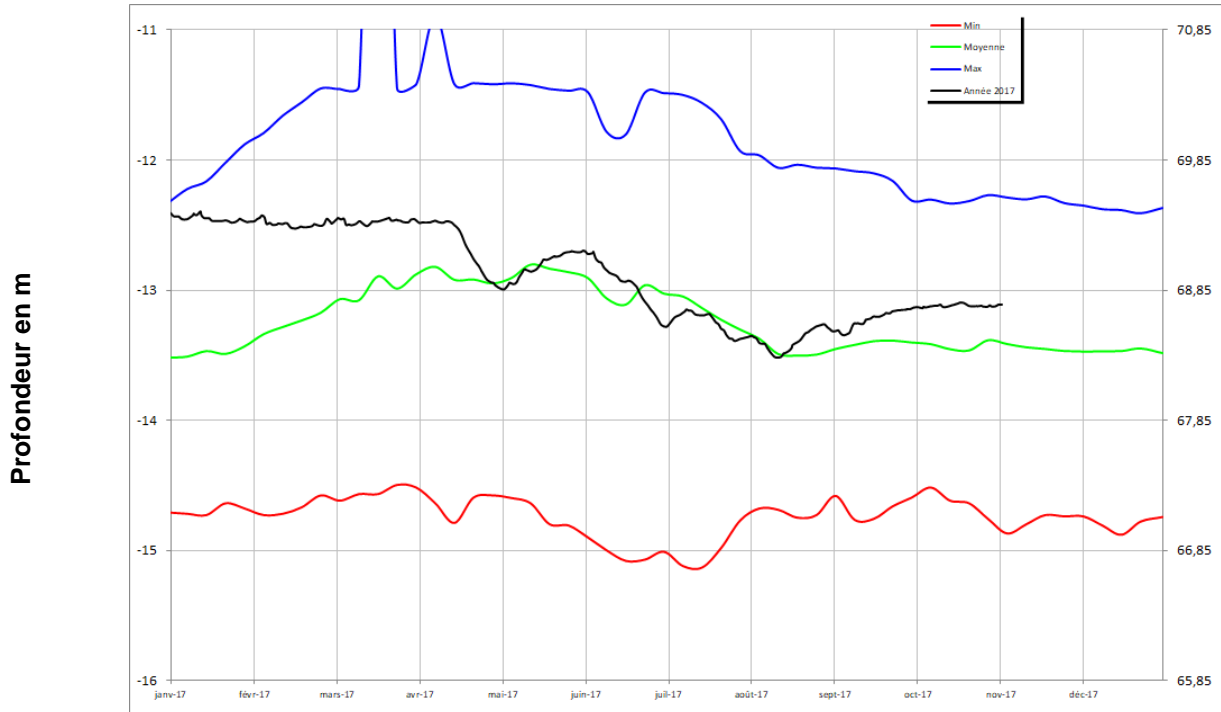
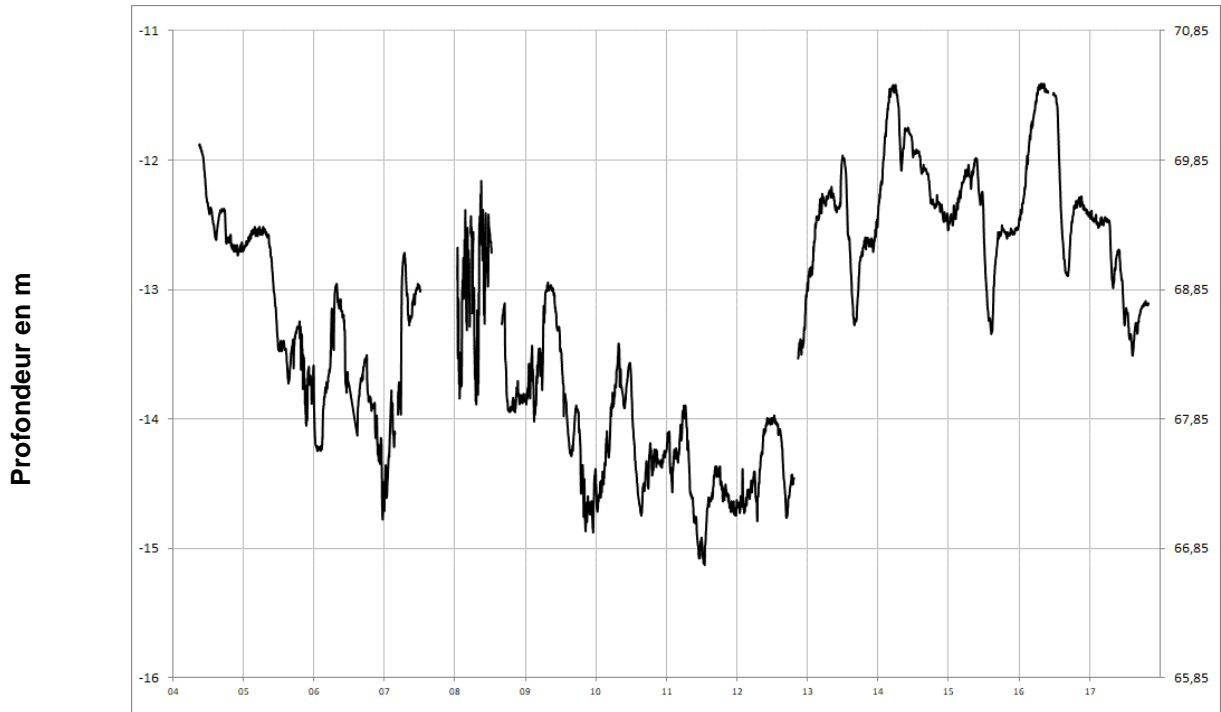
DOUE LA FONTAINE
04856X0084/F





Turonien

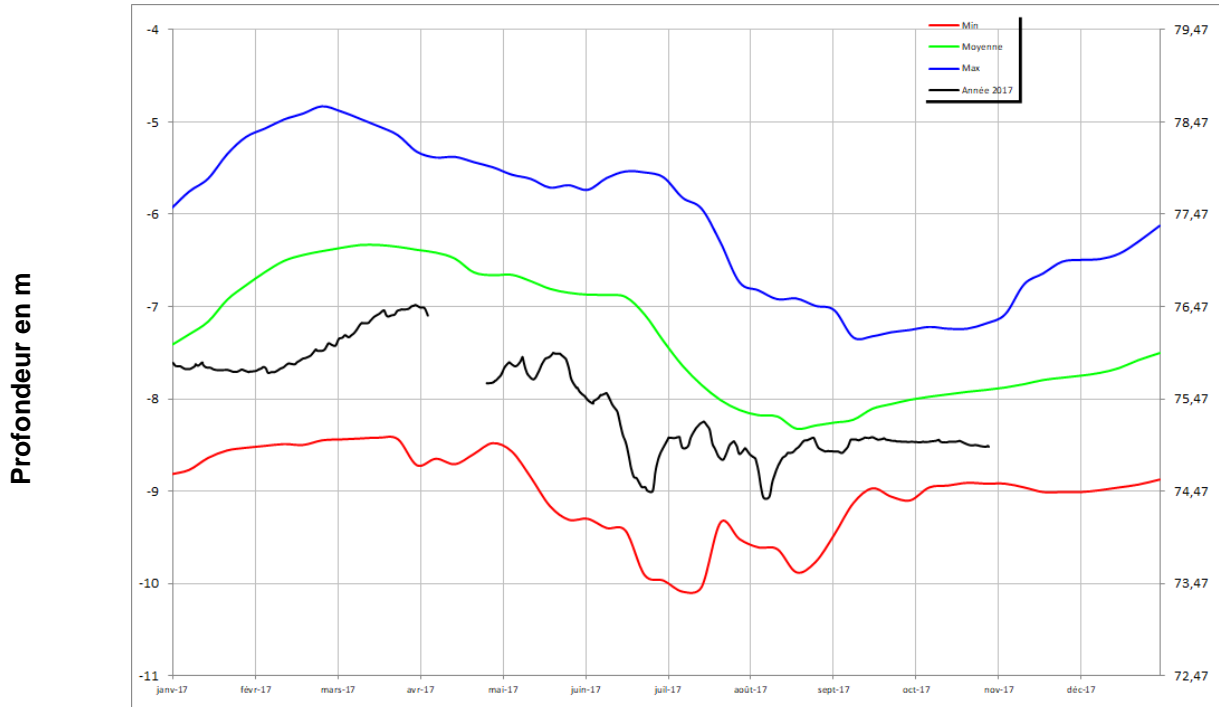
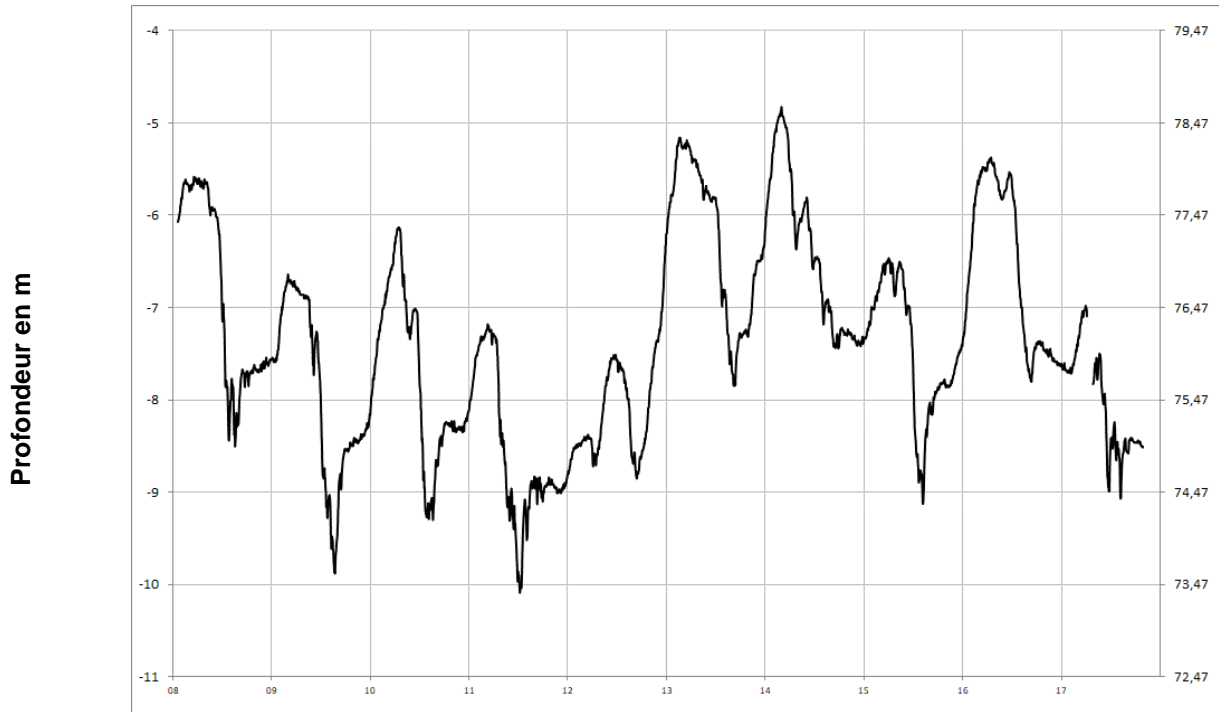
PONTIGNE
04248X0022/F





Turonien

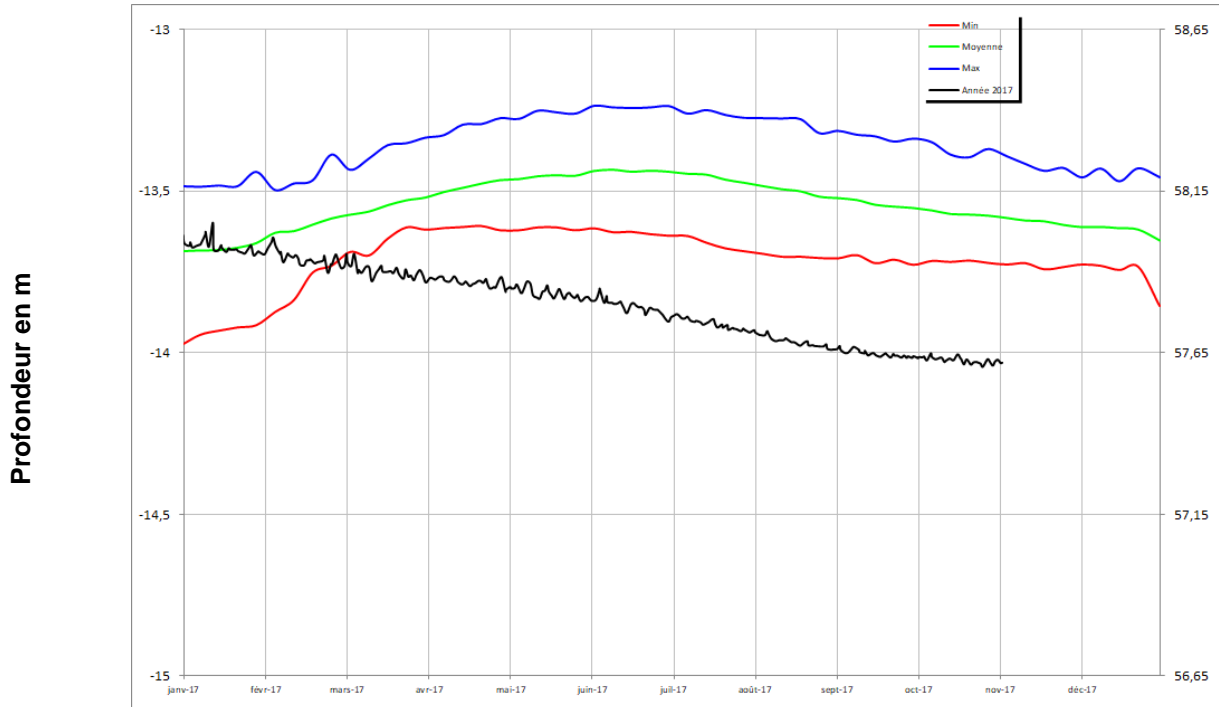
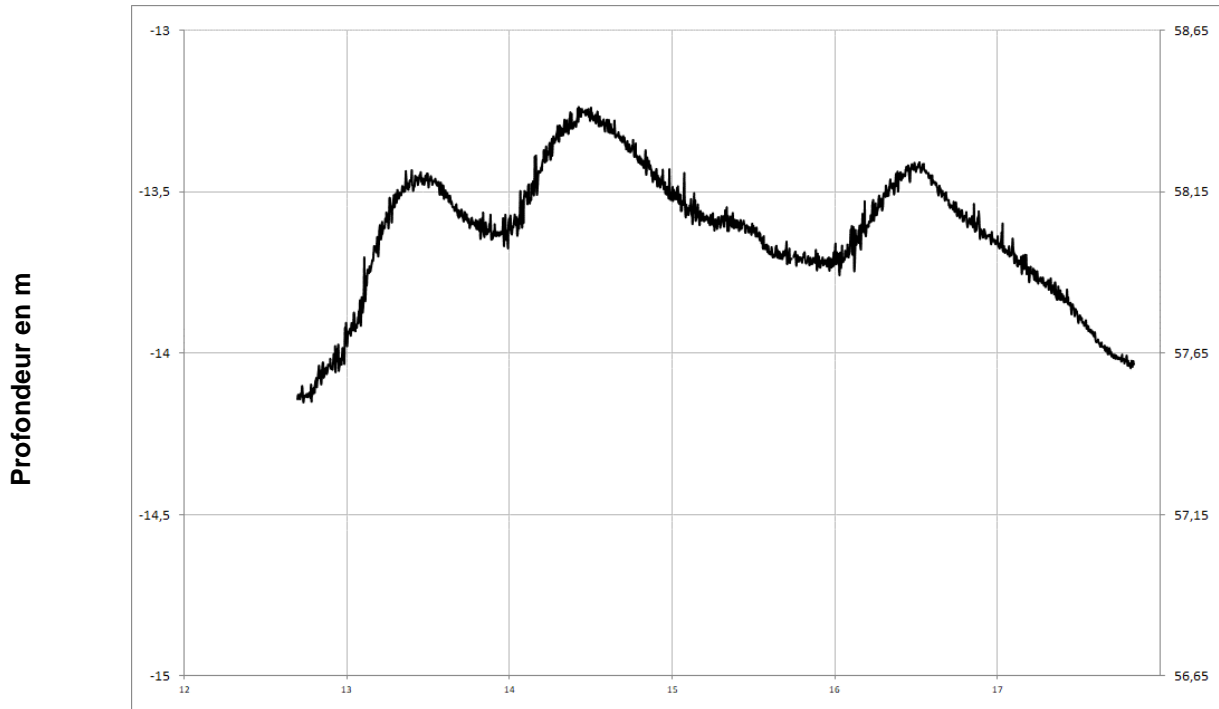
NOYANT
04562X0074/PZ





Turonien

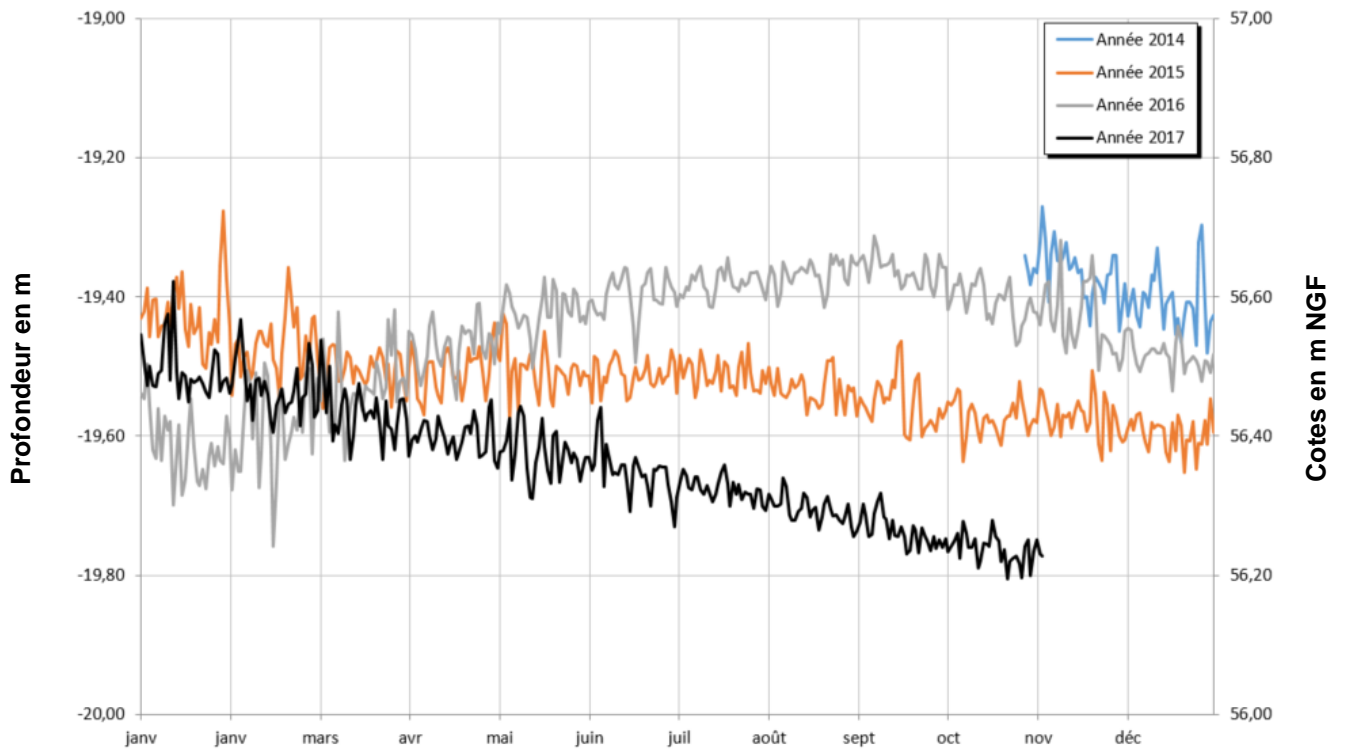
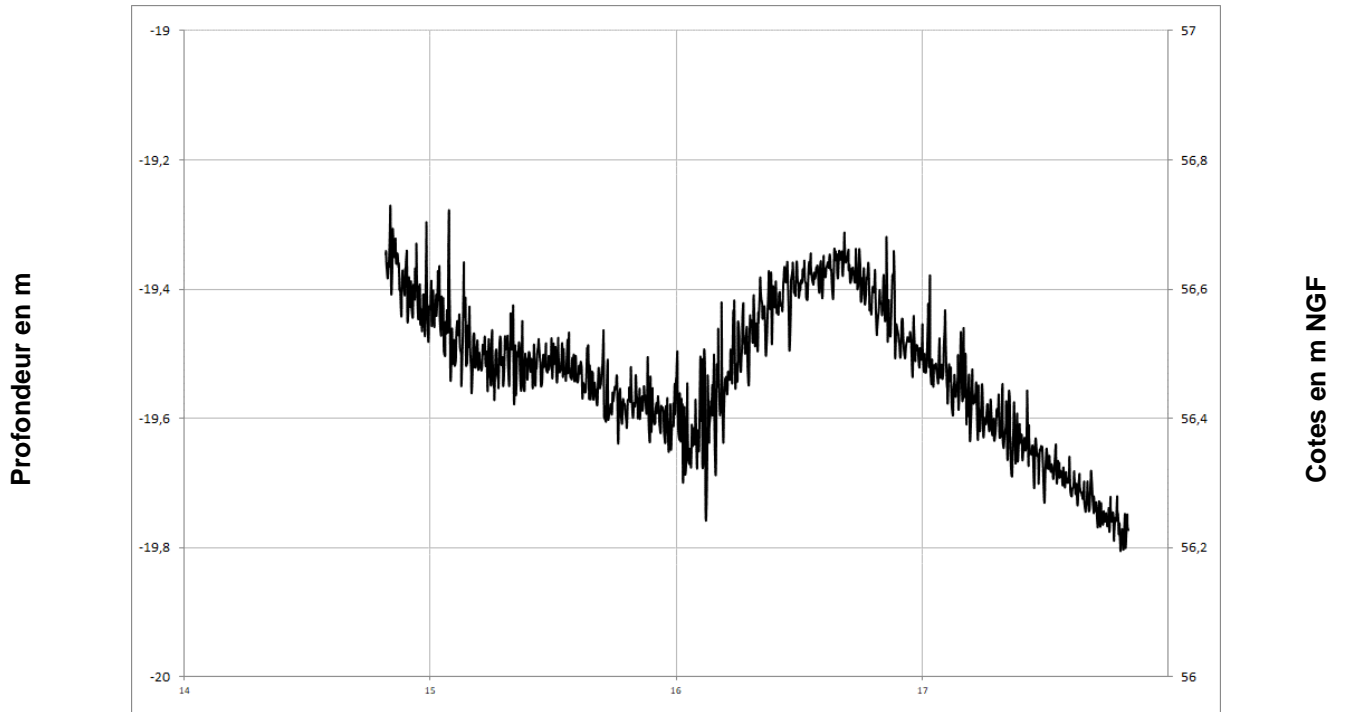
LE GUEDENIAU
04554X0026/PZ





Turonien

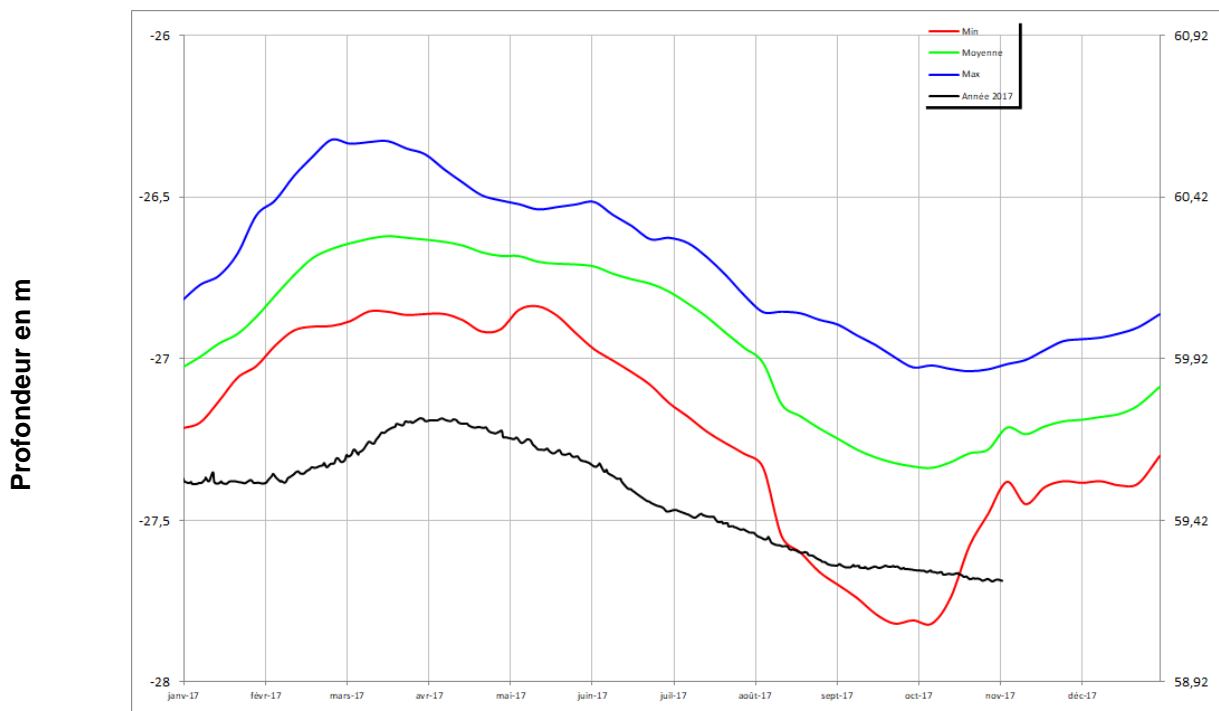
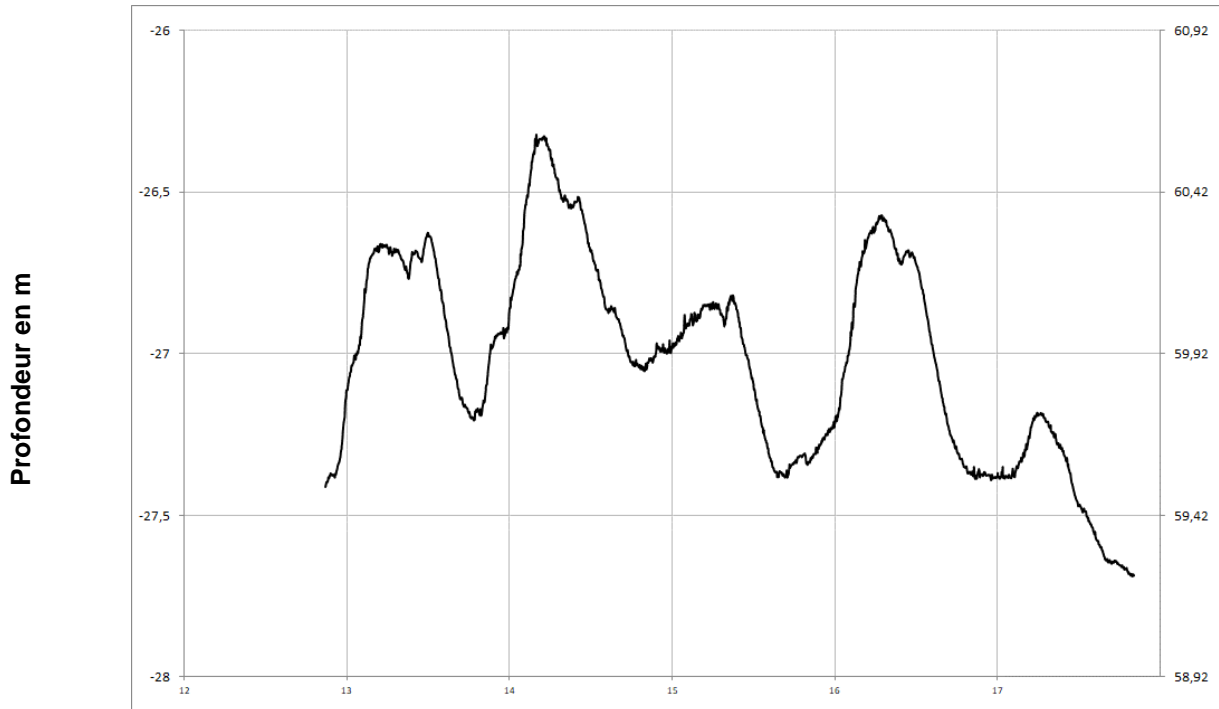
VAULANDRY
04248X0053/PZ





Turonien

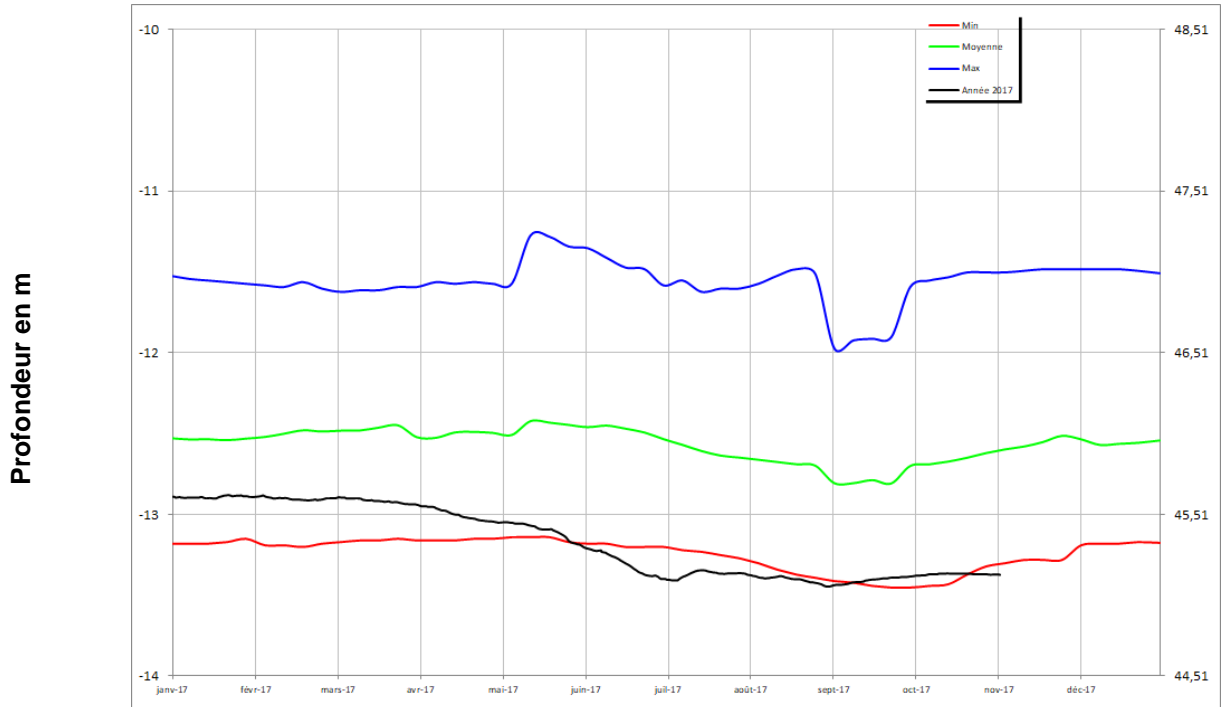
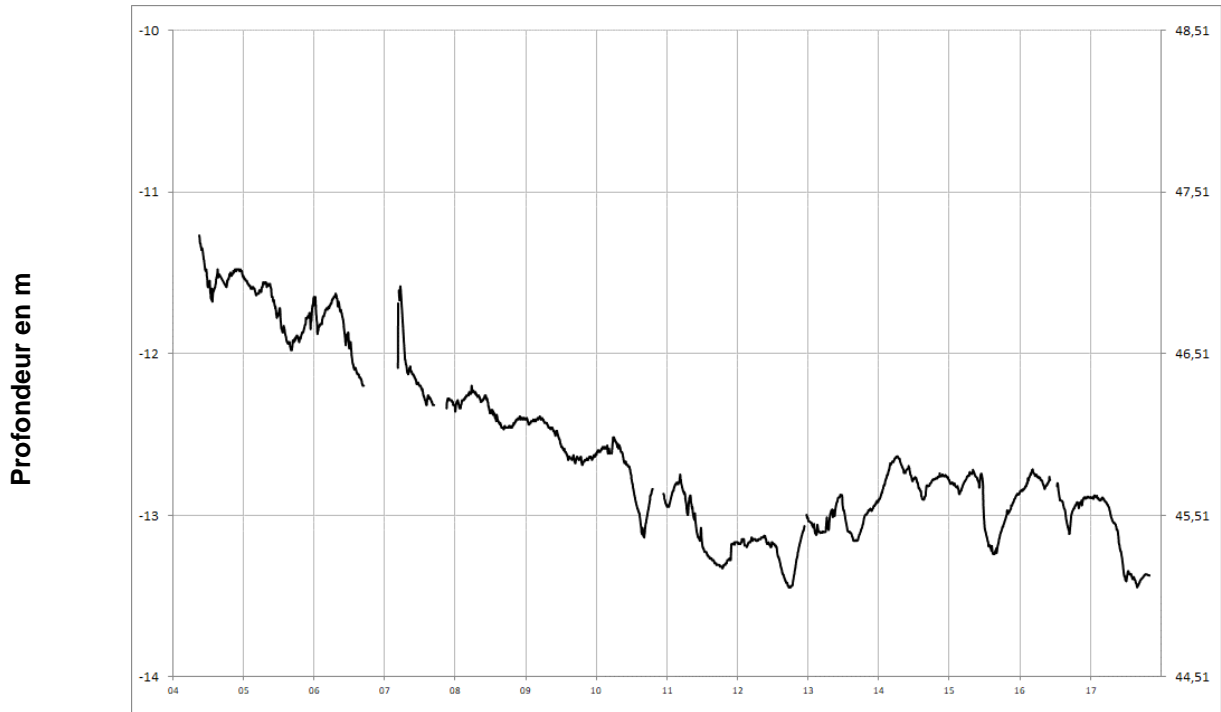
VERNOIL-LE-FOURRIER
04565X0076/PZ





Turonien

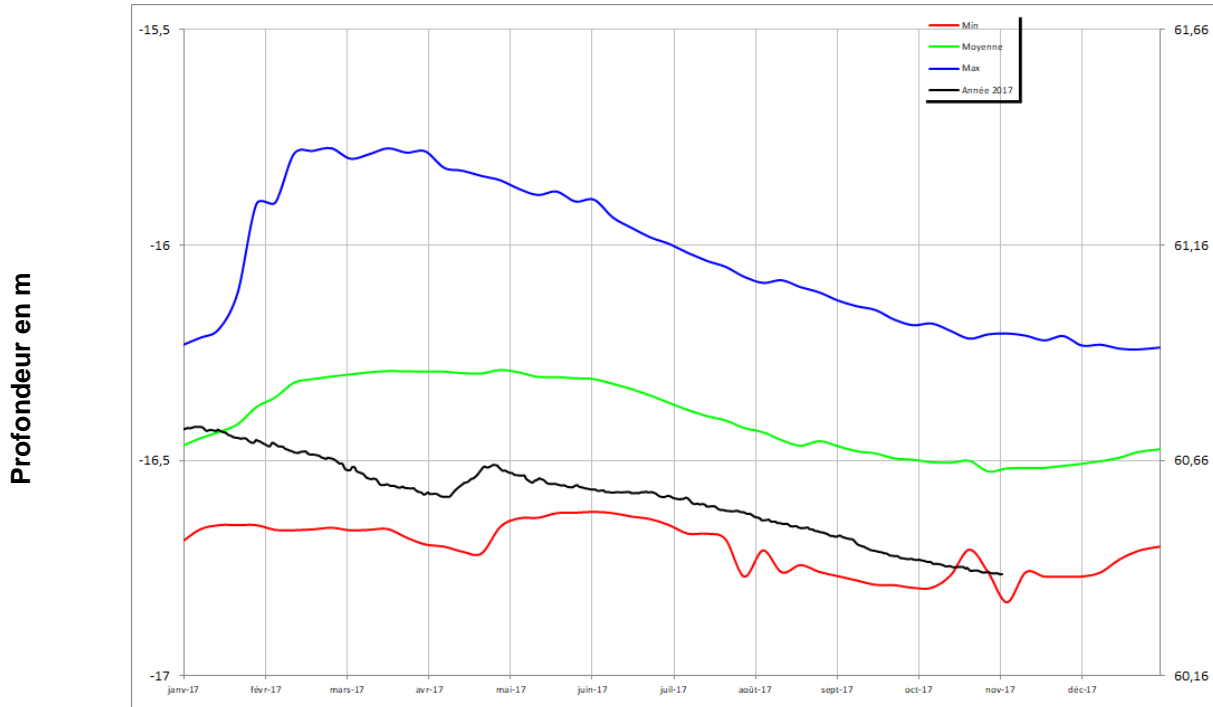
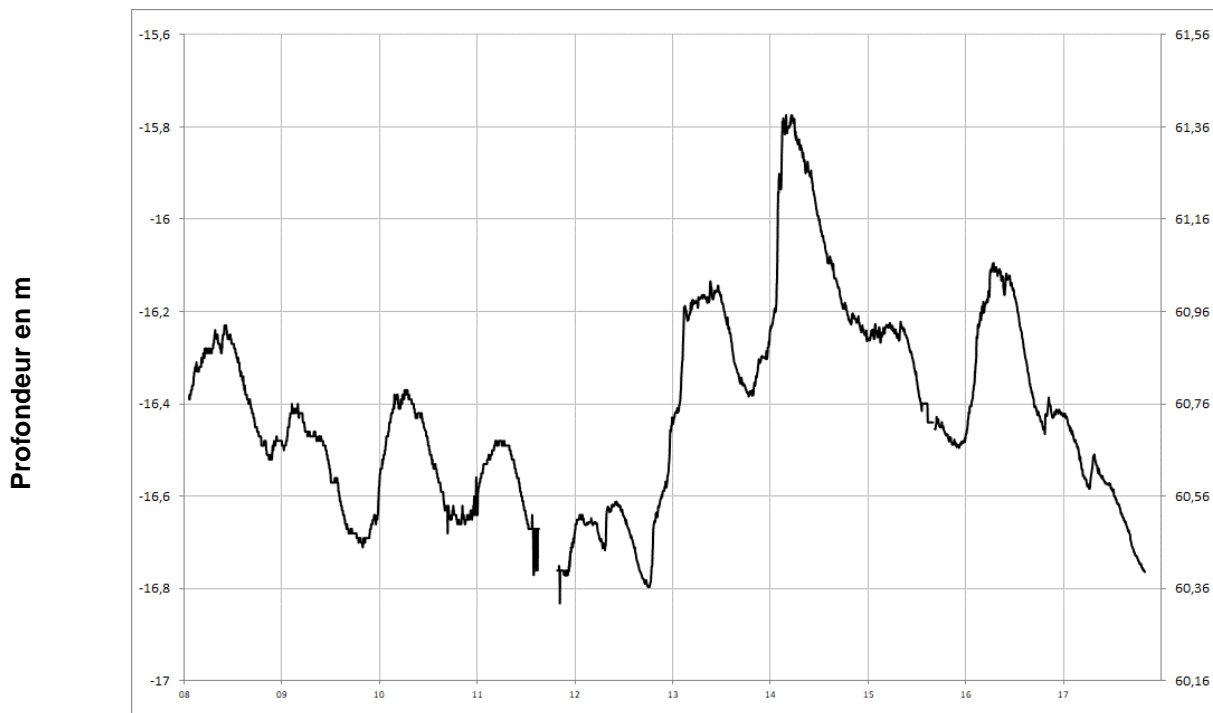
NEUILLE
04558X0072/AEP





Turonien

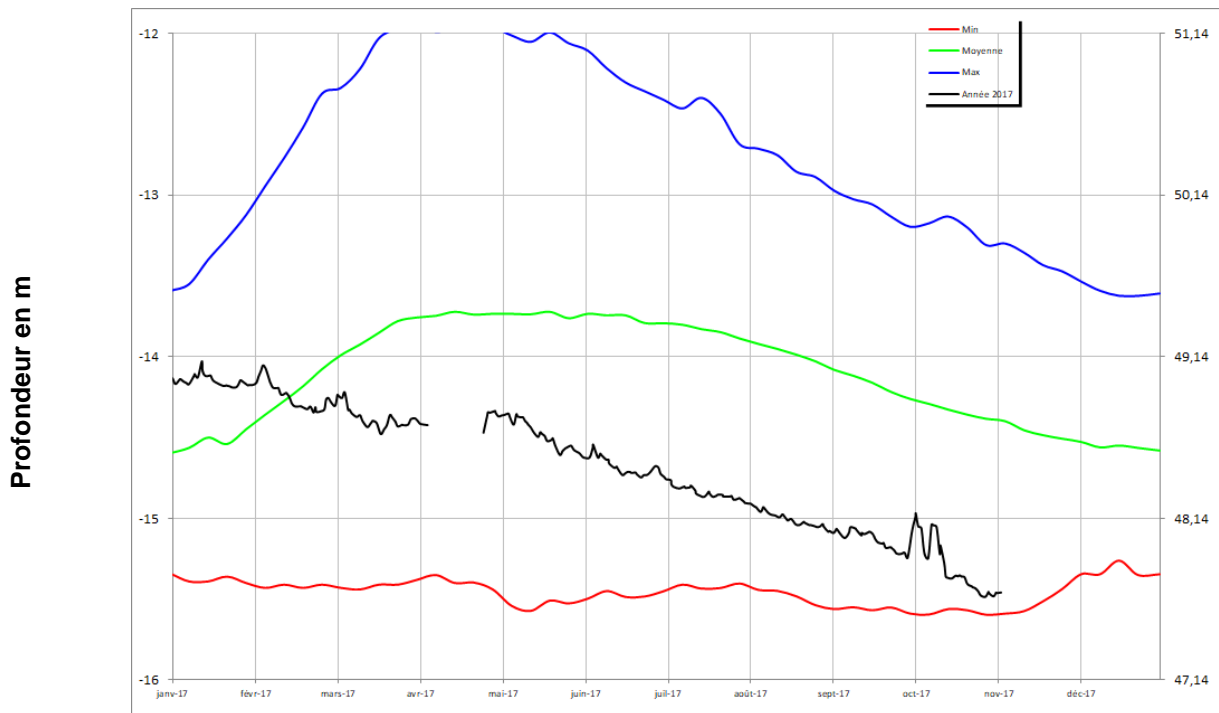
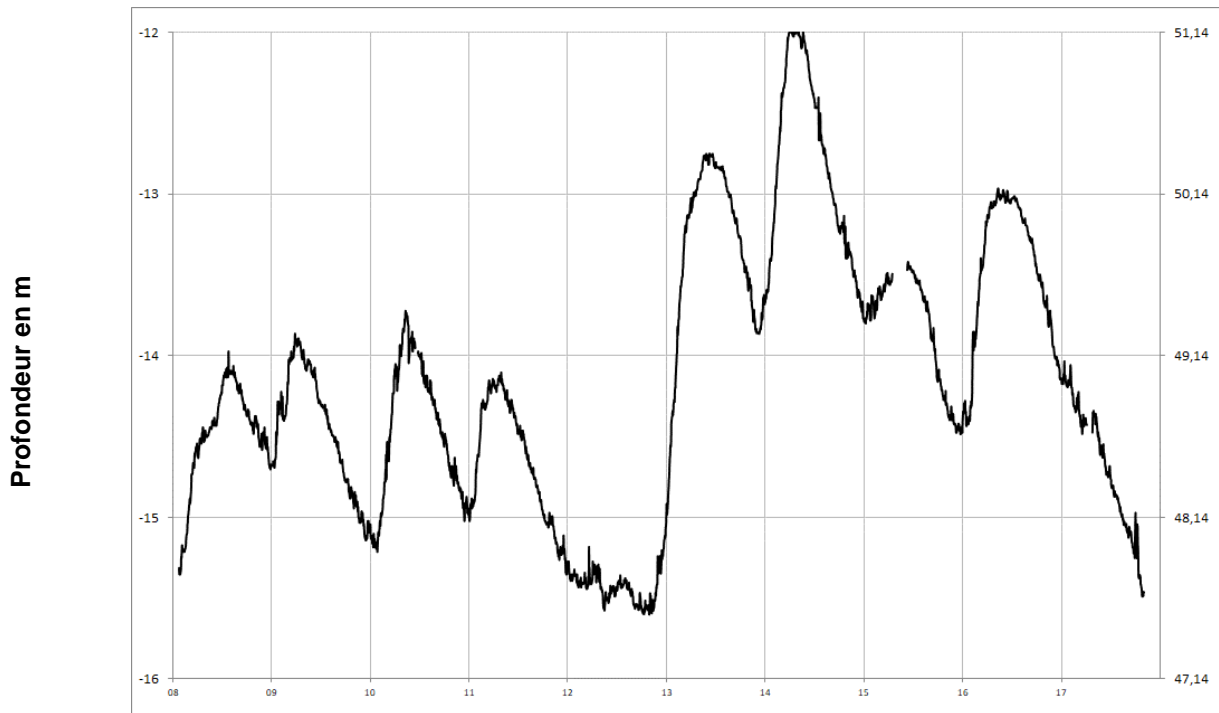
LOUERRE
04851X0091/PZ





Cénomaniens (sables)

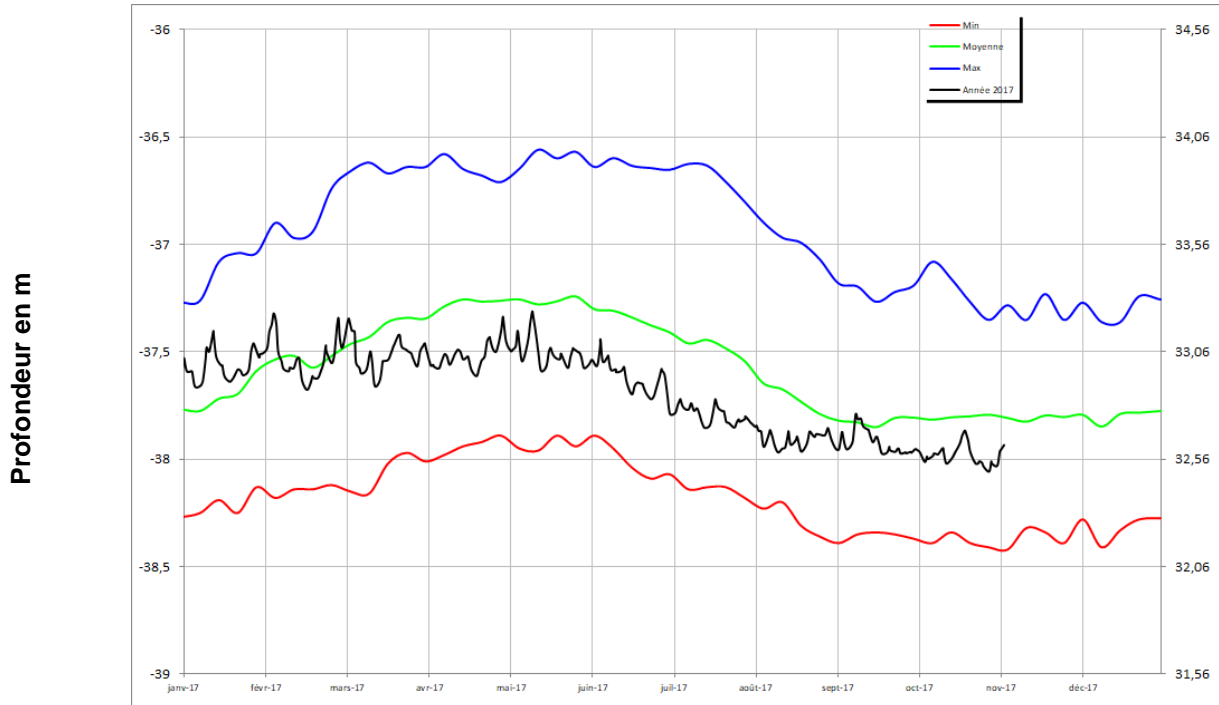
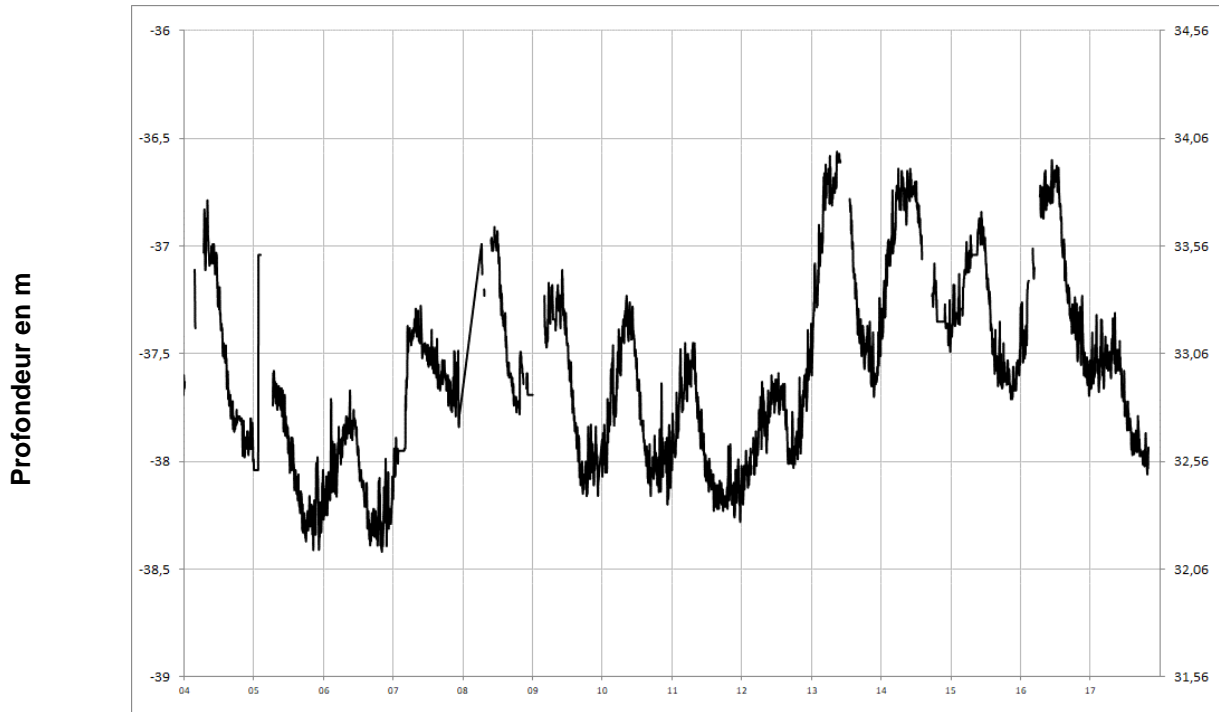
DAUMERAY
03925X0017/PZ





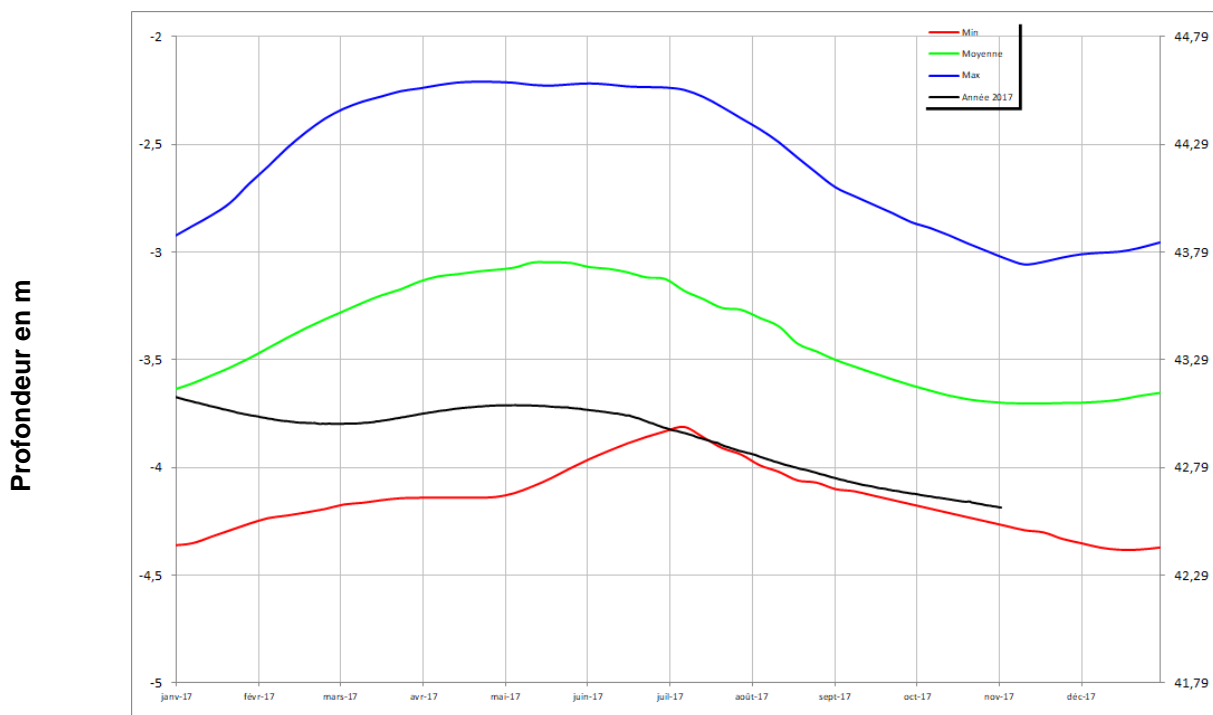
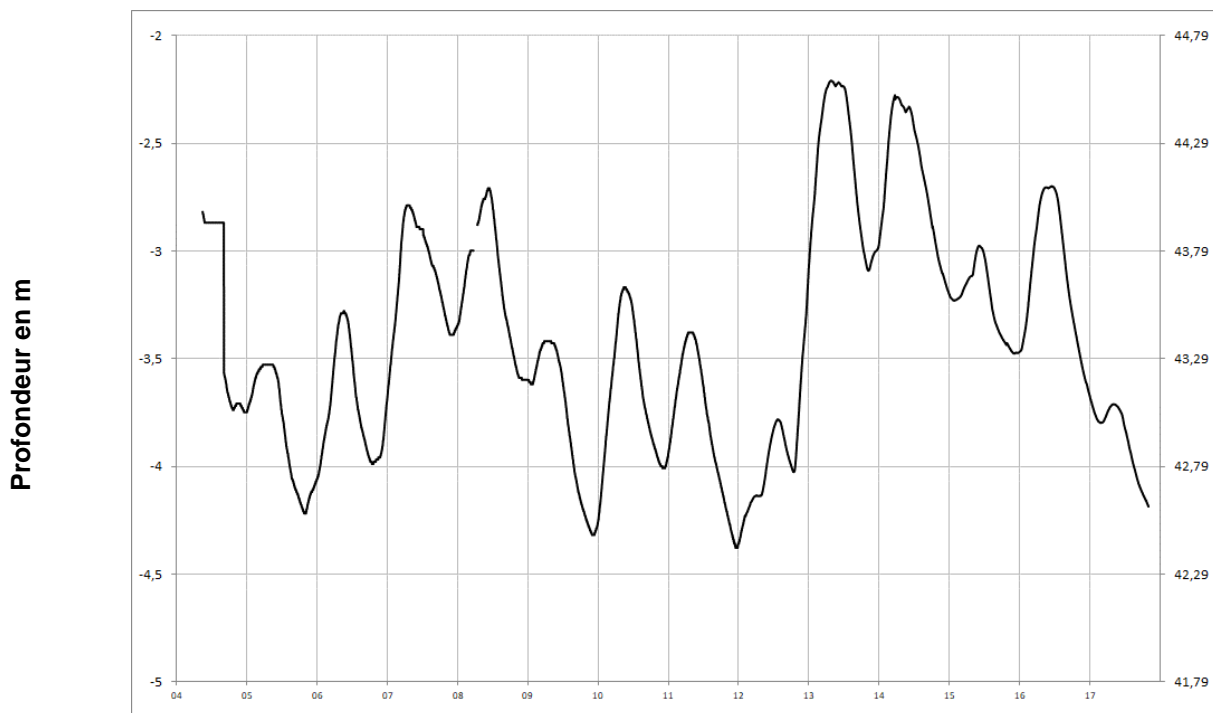
Cénomaniens (sables)

MONTIGNE LES RAIRIES
04242X0053/F



Cénomaniens (sables)

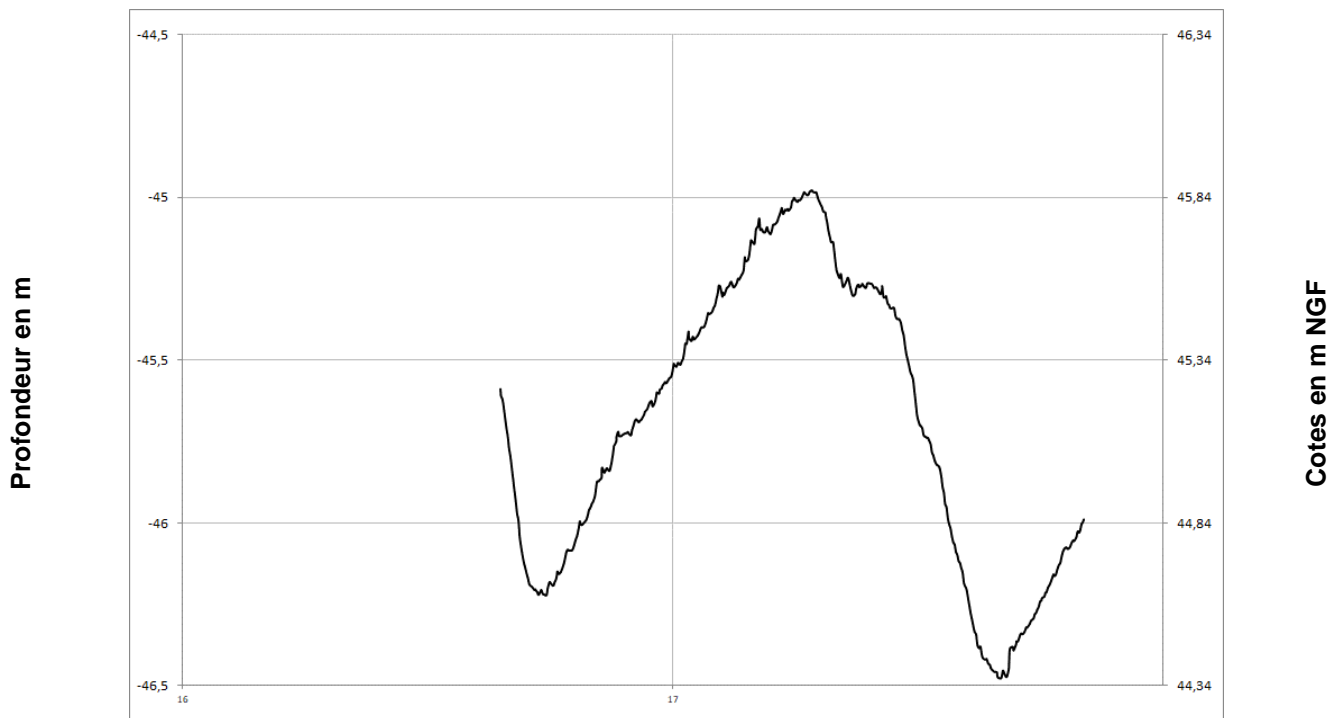
BRION
04553X0023/F





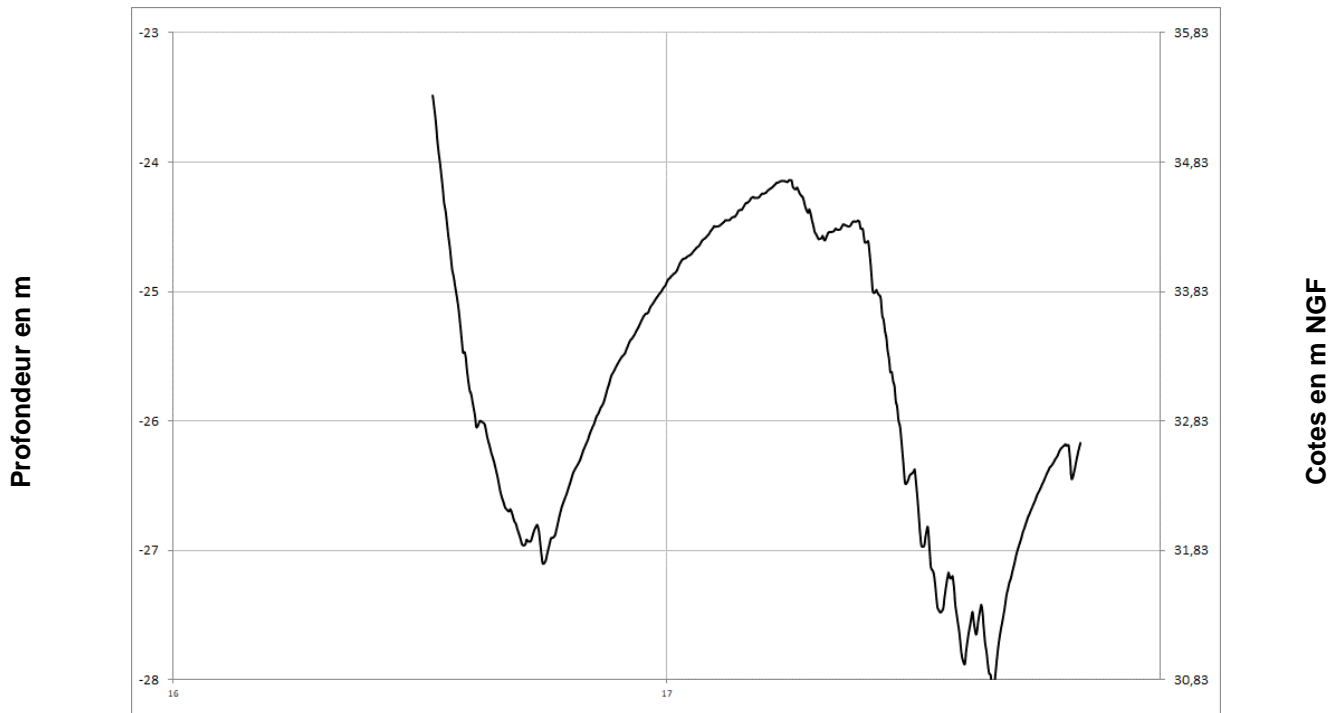
Cénomaniens (sables)

PONTIGNE
04248X0058/PZ



Cénomaniens (sables)

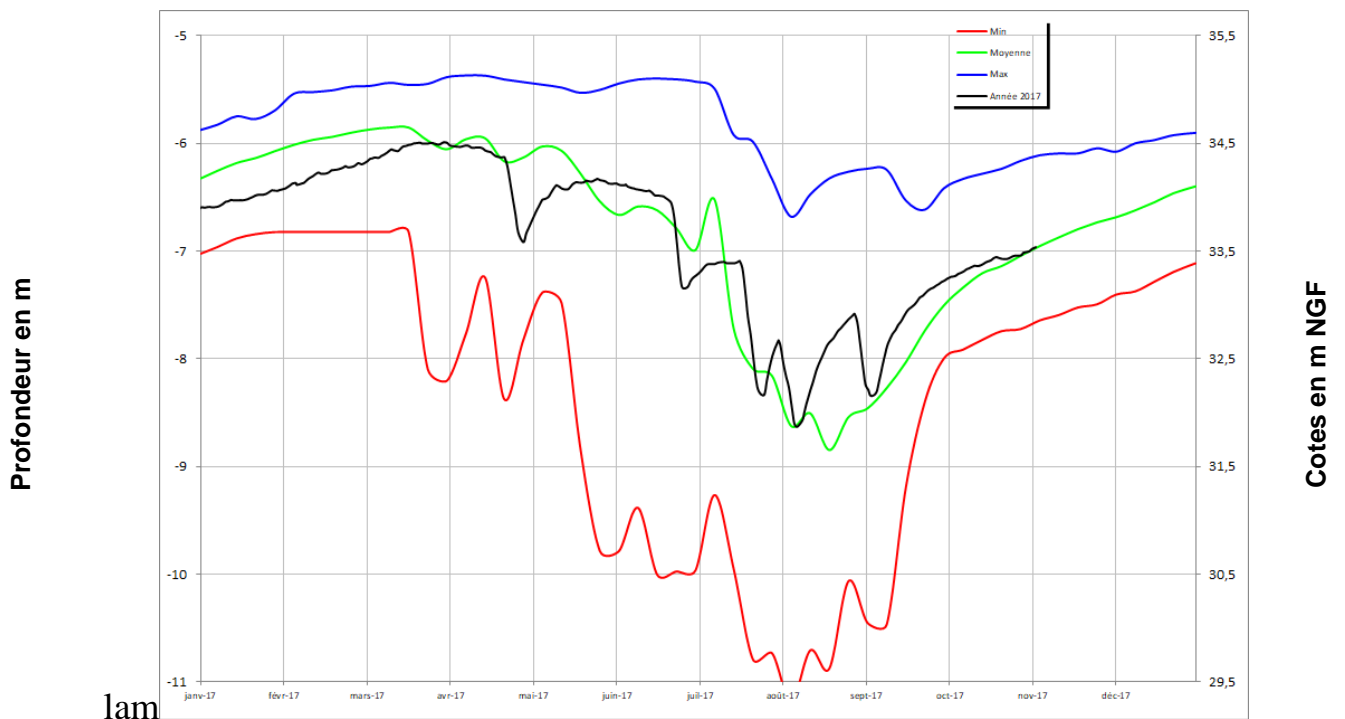
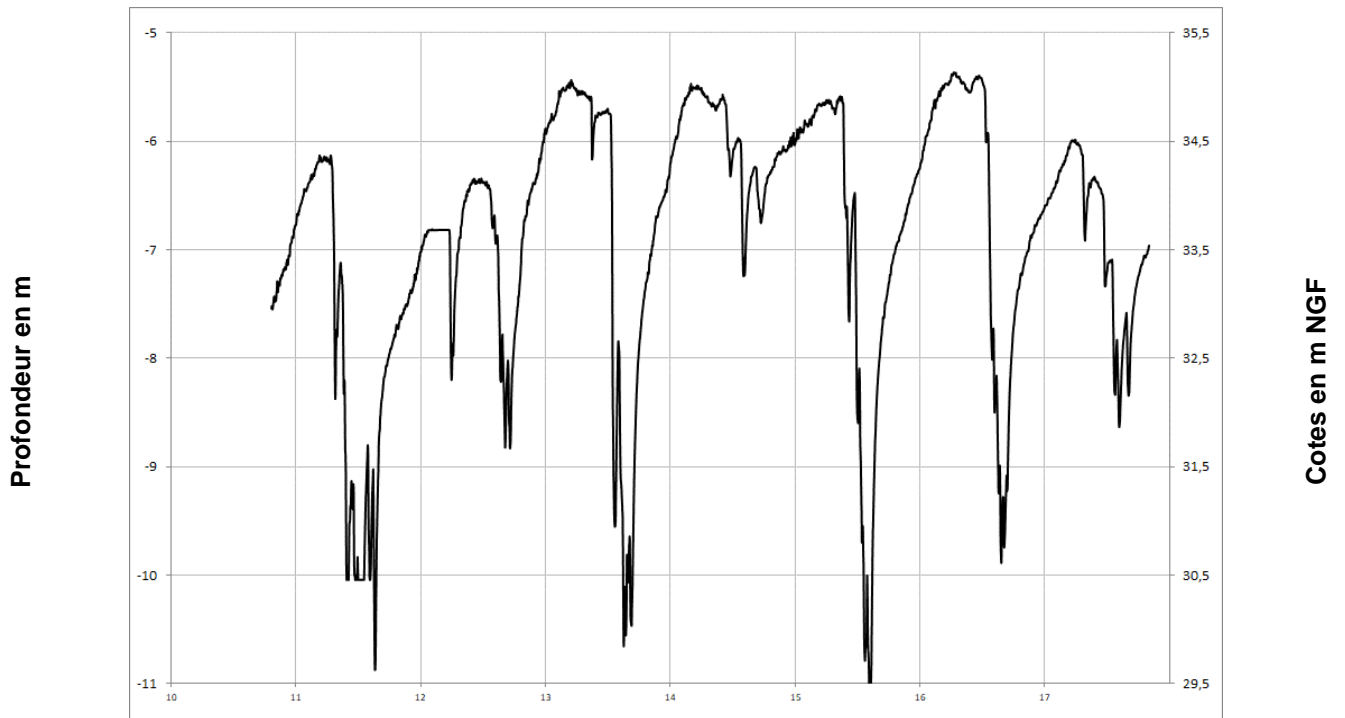
NEUILLE
04558X0125/PZ





Cénomaniens (sables)

FONTAINE MILON
04552X0110/PZ

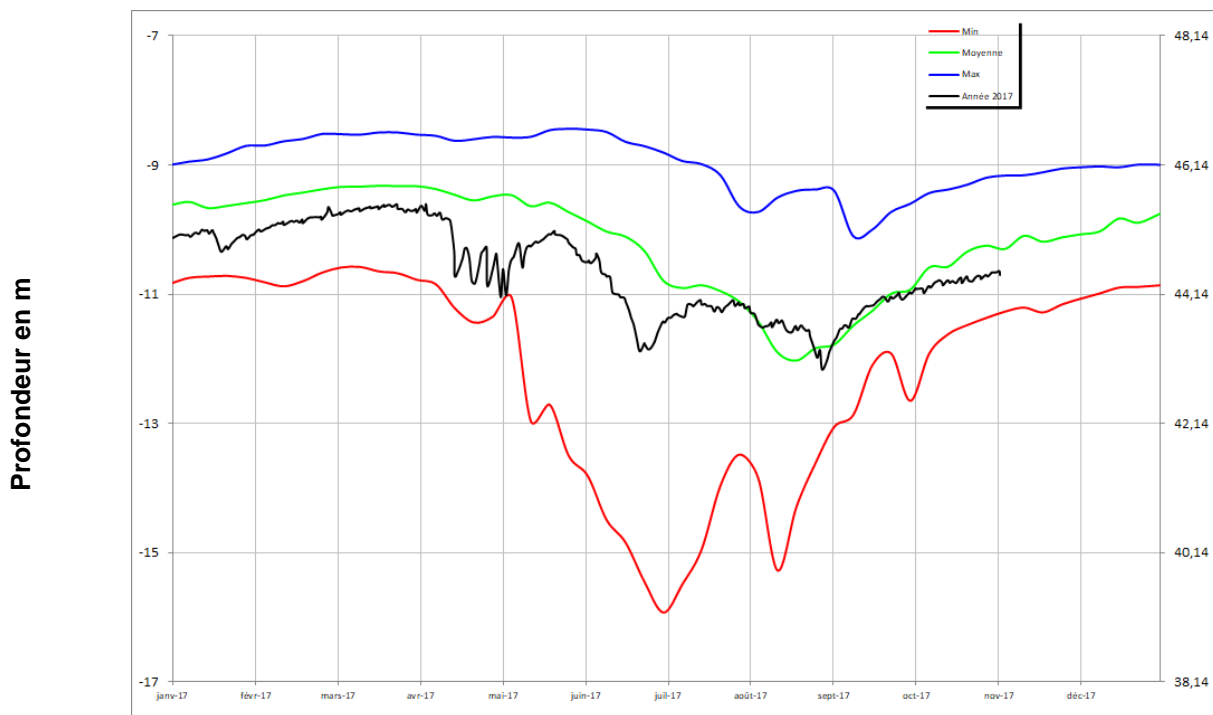
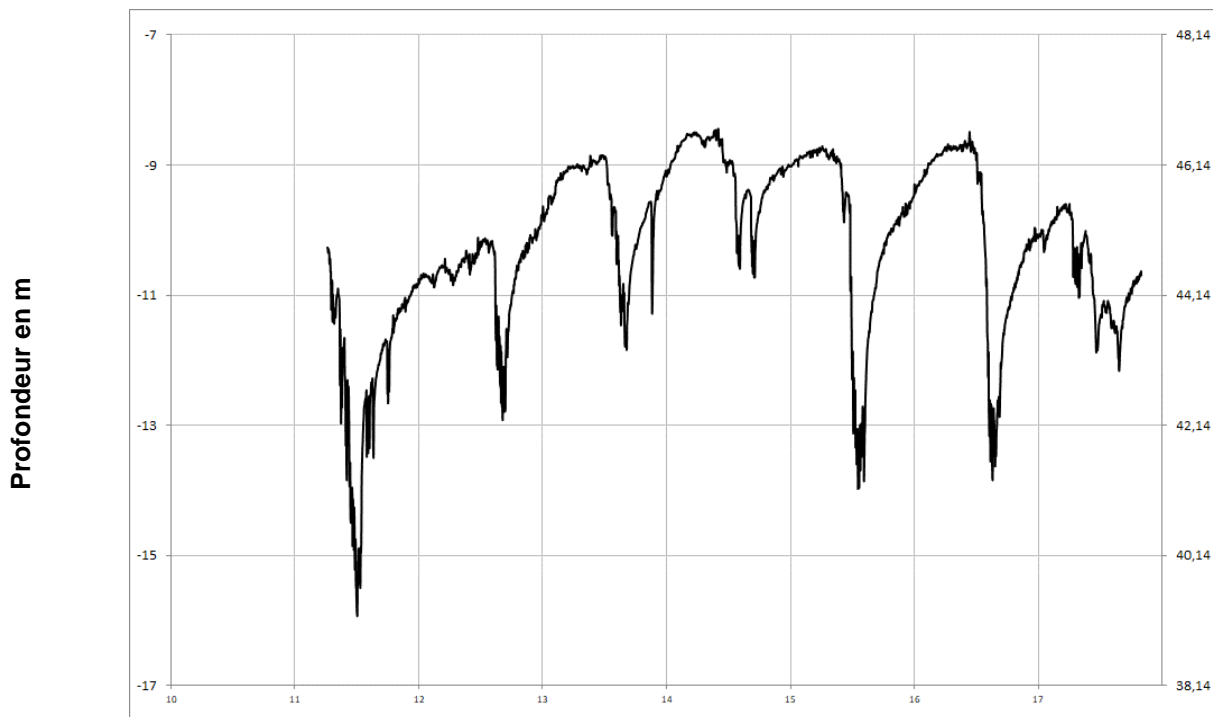


lam



Cénomaniens (sables)

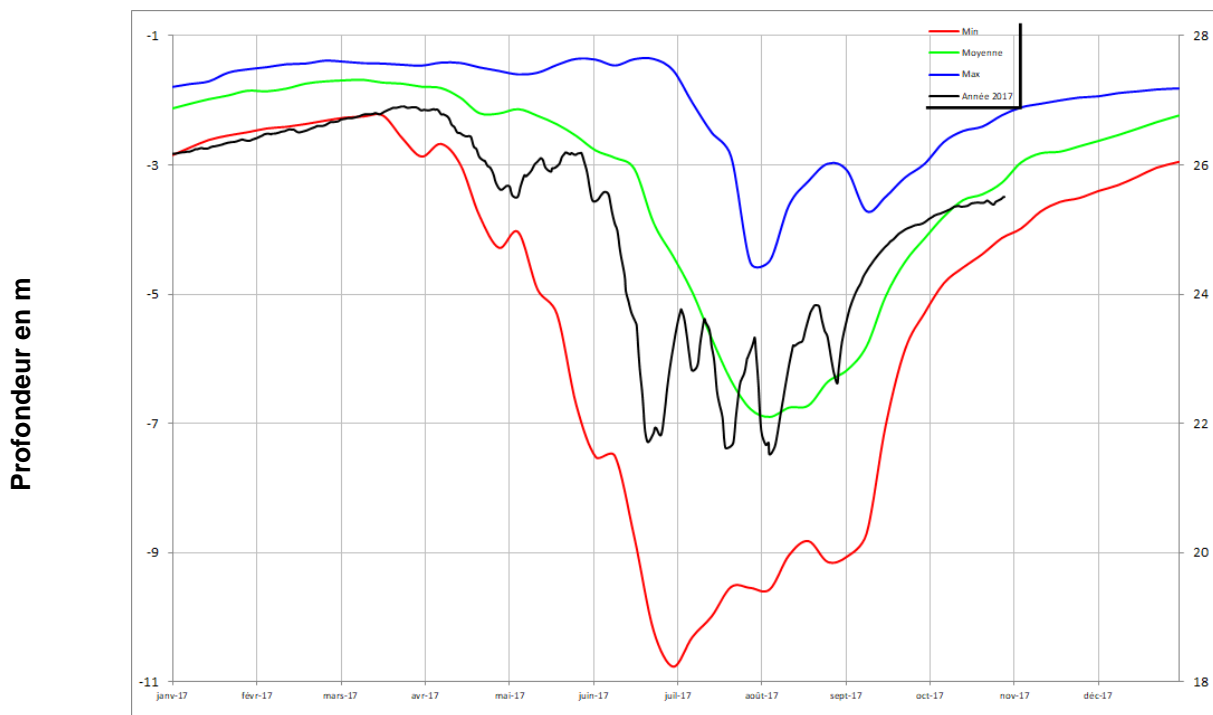
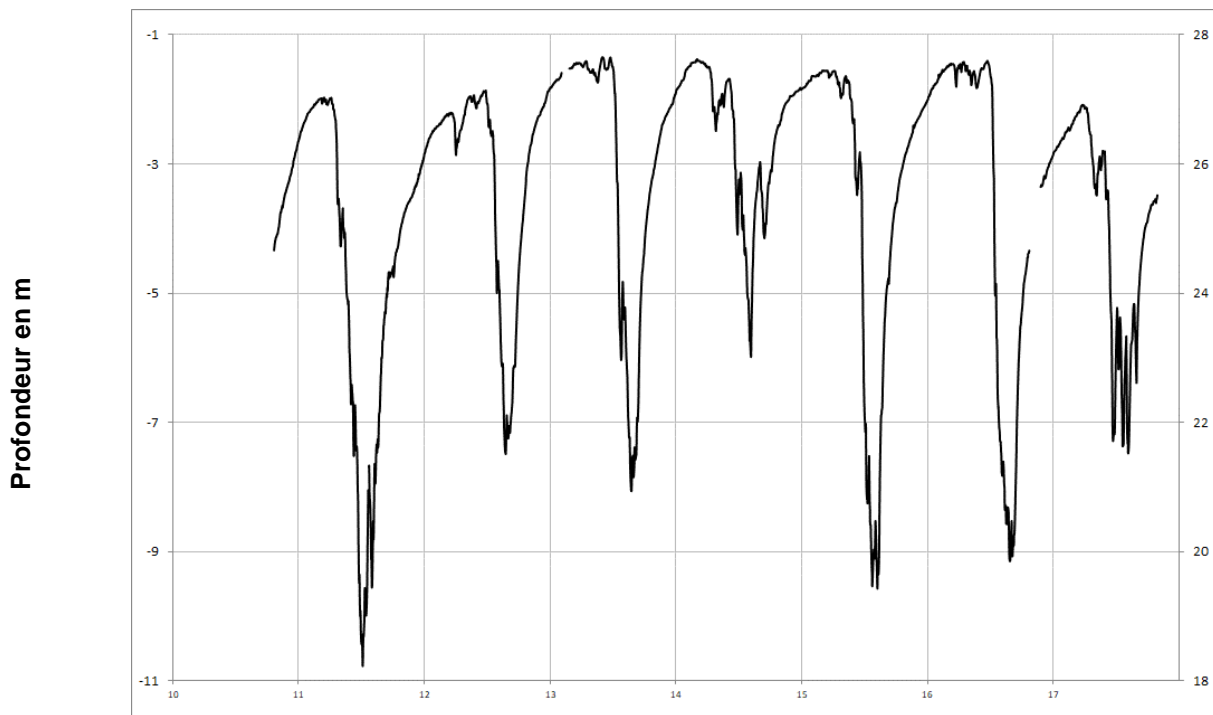
VERNOIL-LE-FOURRIER
04565X0077/PZ1





Cénomaniens (sables)

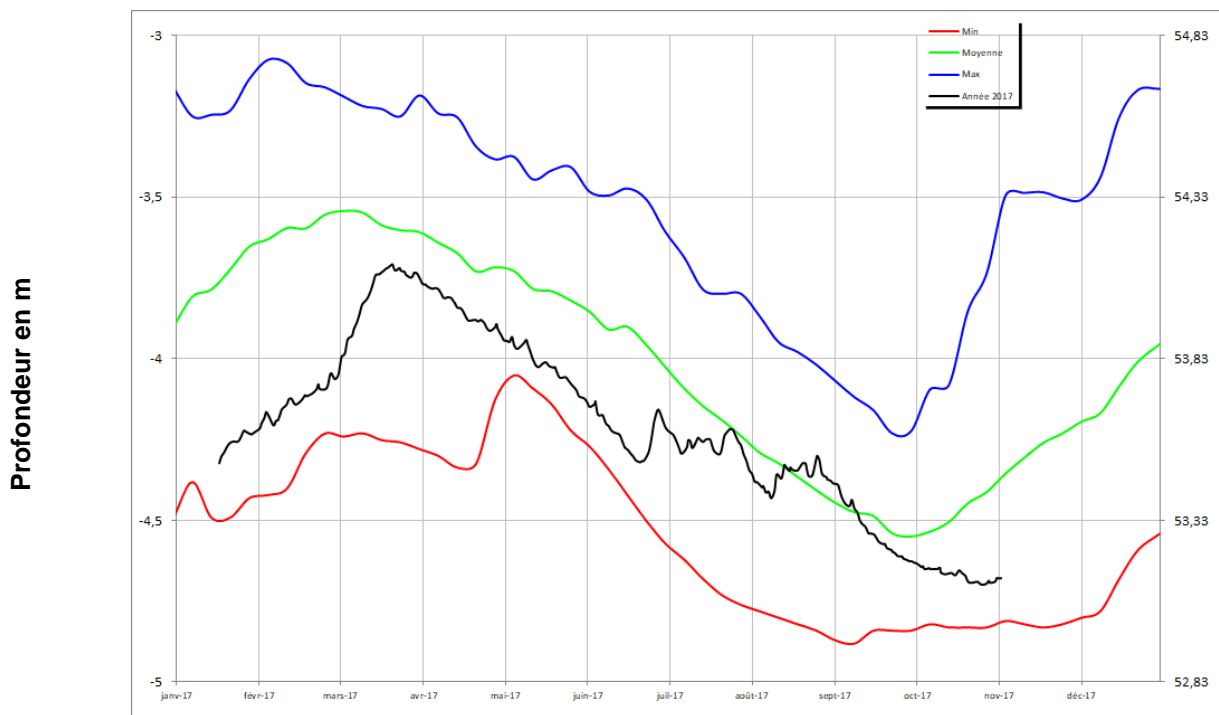
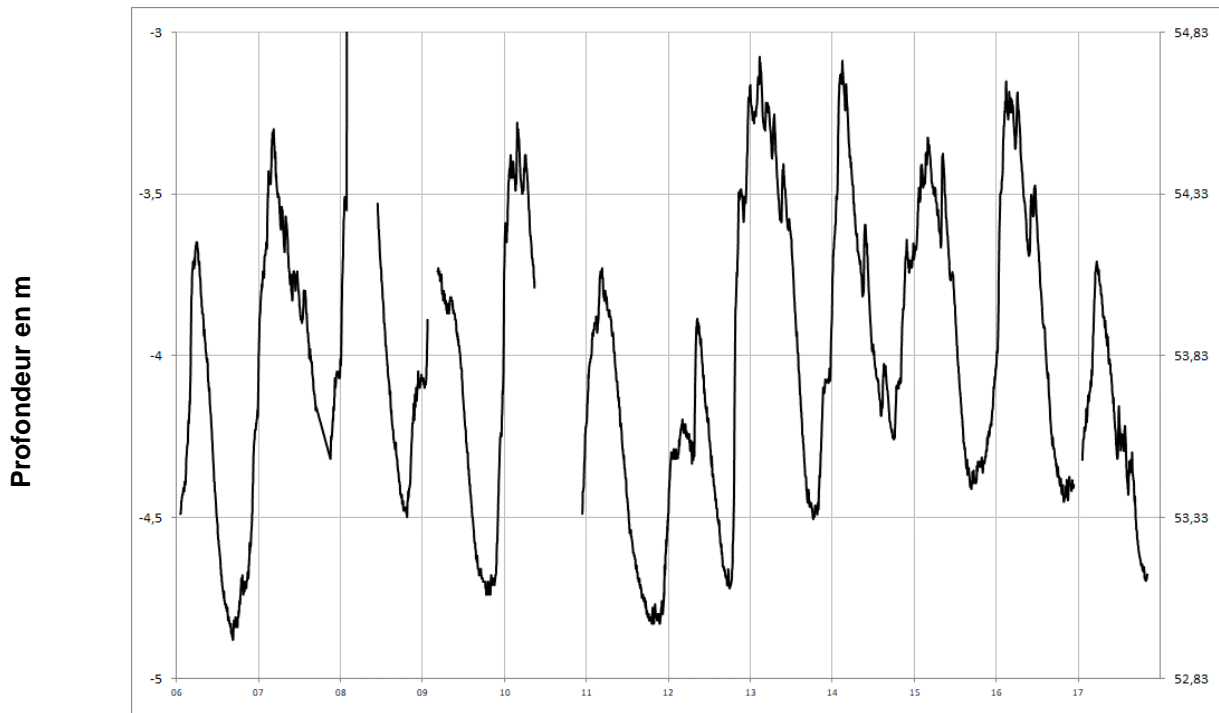
VIVY
04854X0282/PZ





Cénomaniens (sables)

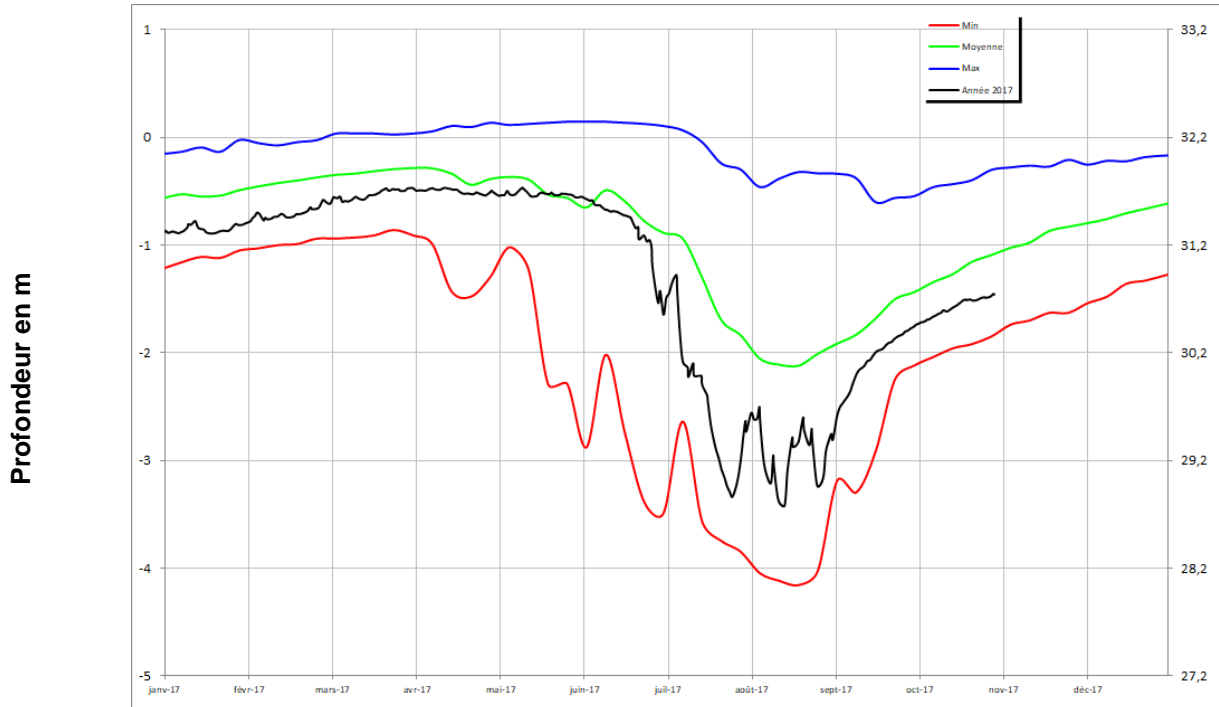
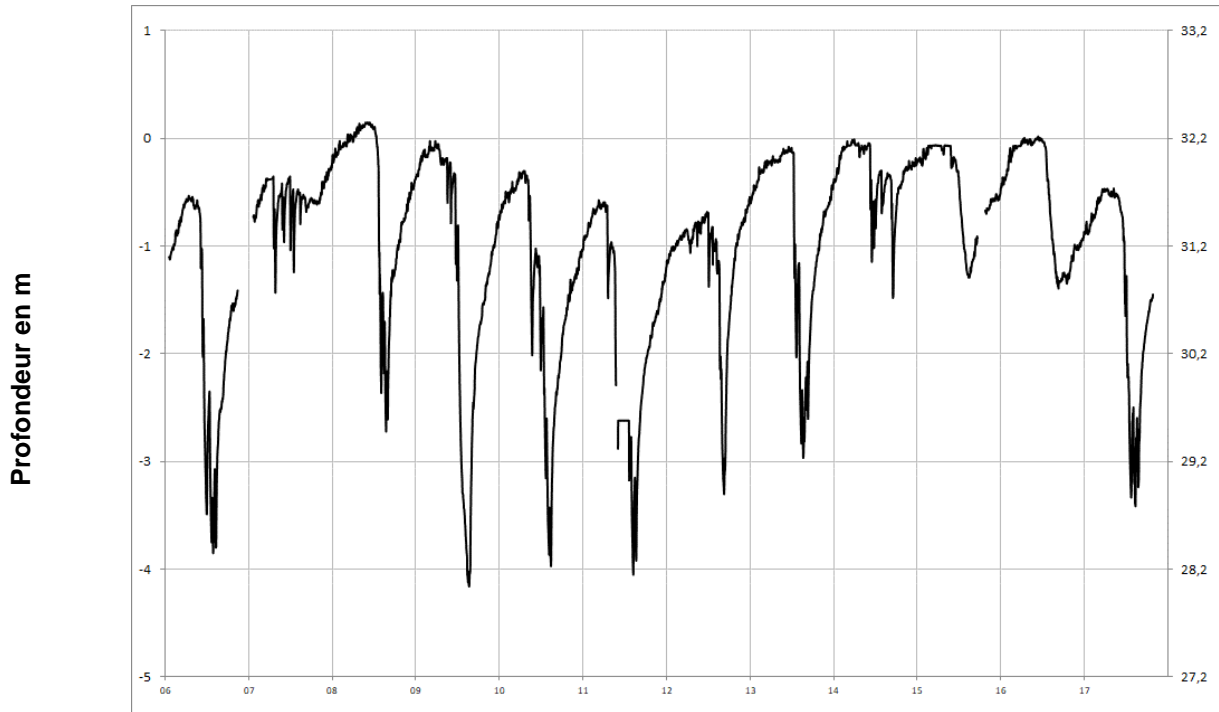
DOUE LA FONTAINE
04855X0077/PZ





Cénomaniens (sables)

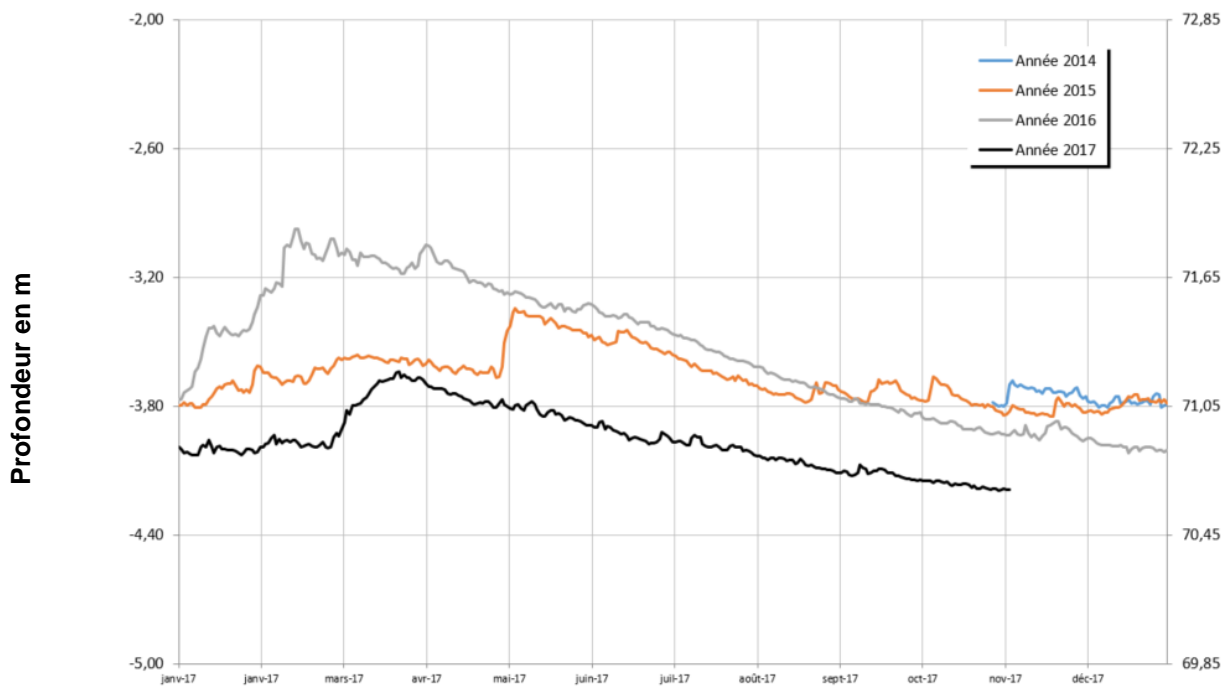
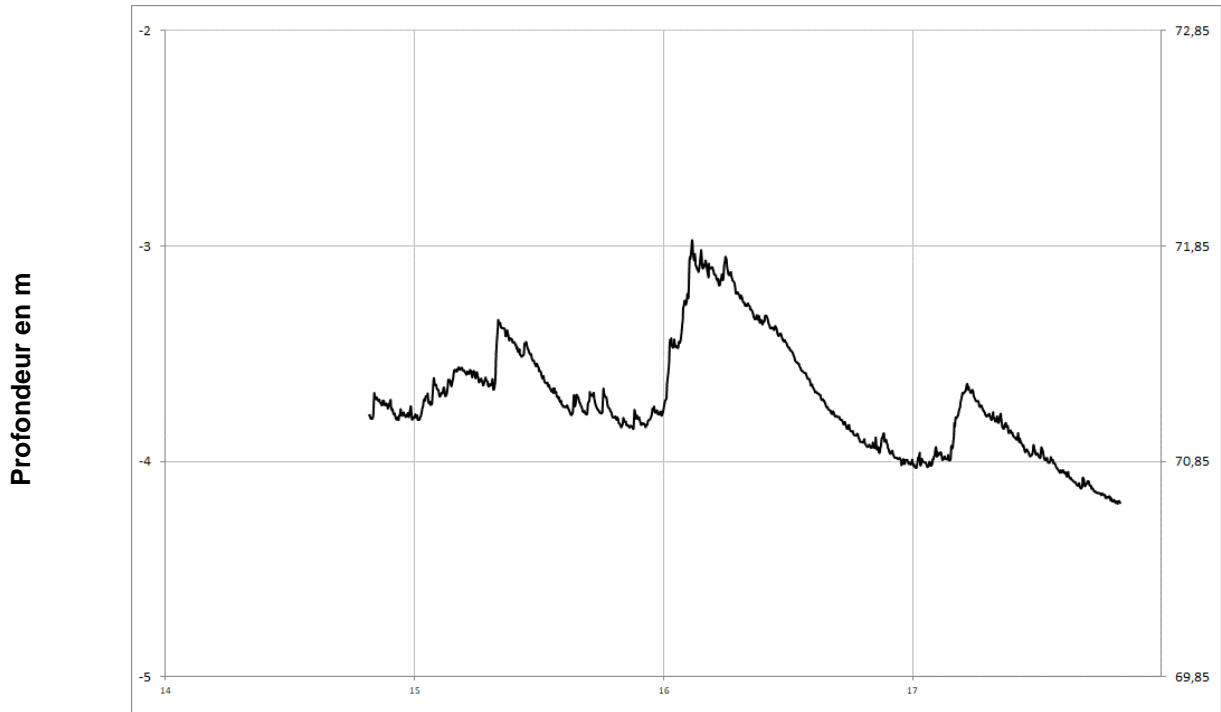
COUDRAY MACOUARD
04857X0024/F1993





Cénomaniens (sables)

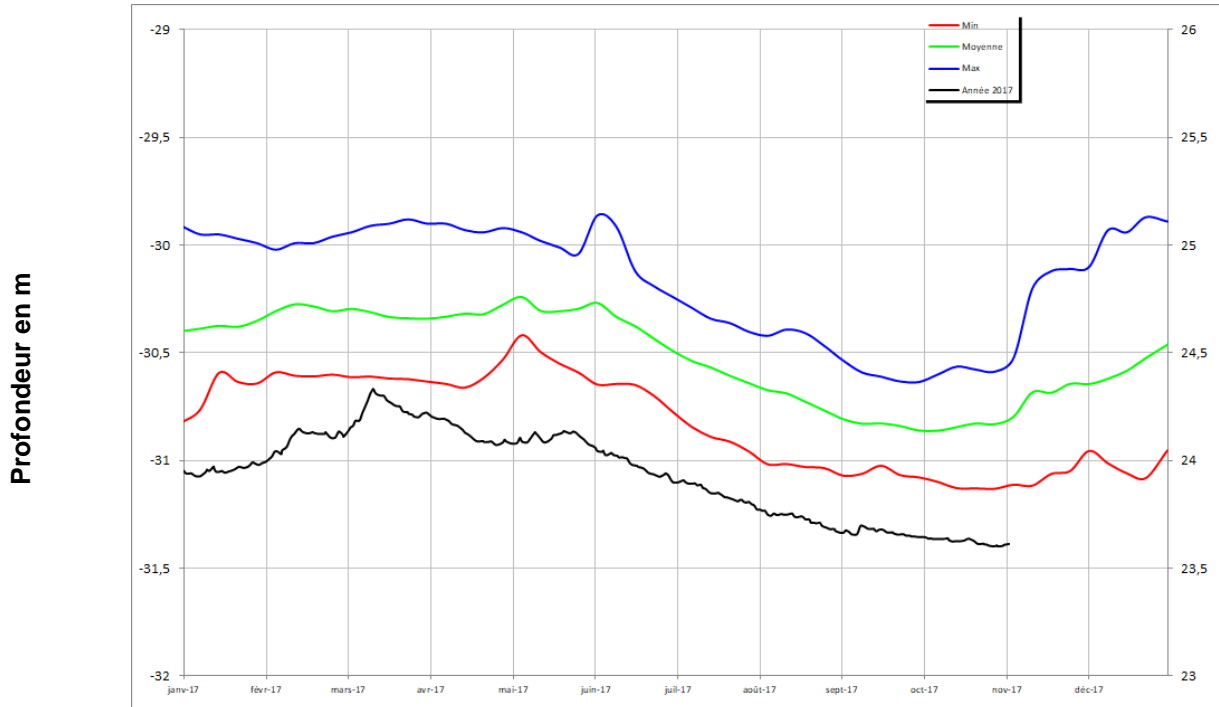
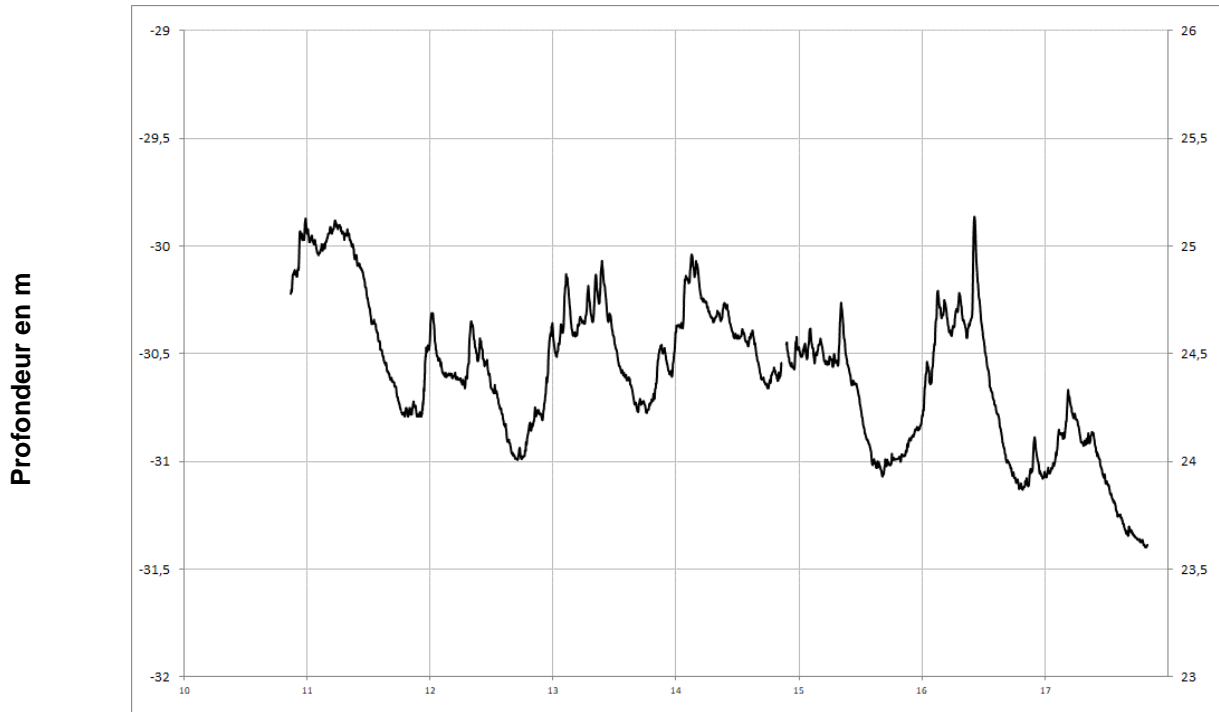
CHAVAGNES 04844X0081/PZ





Cénomaniens (sables)

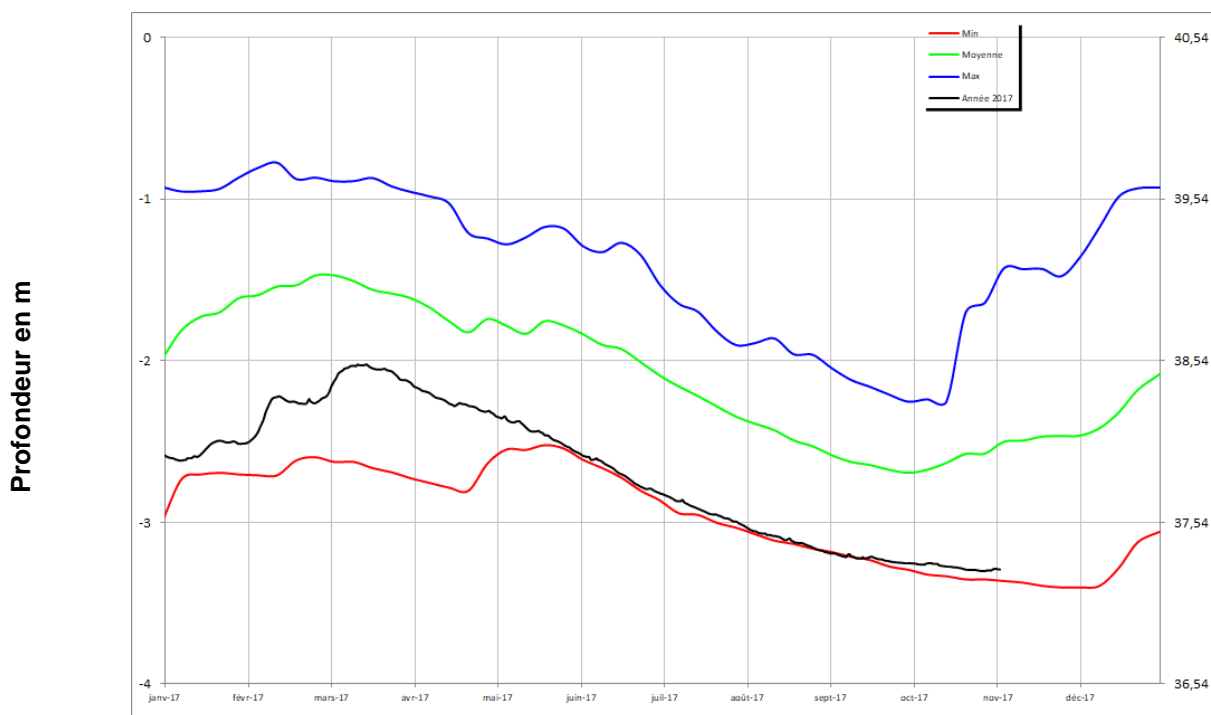
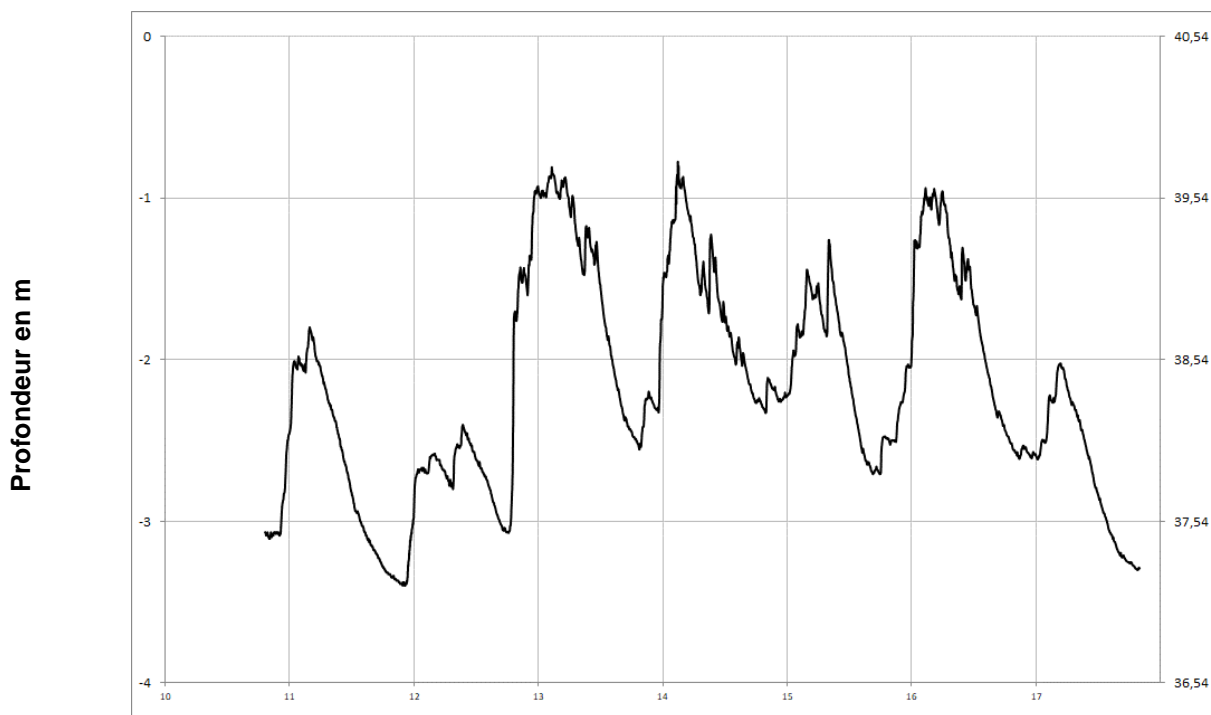
SOUZAY
04858X0135/PZ





Jurassique (calcaires)

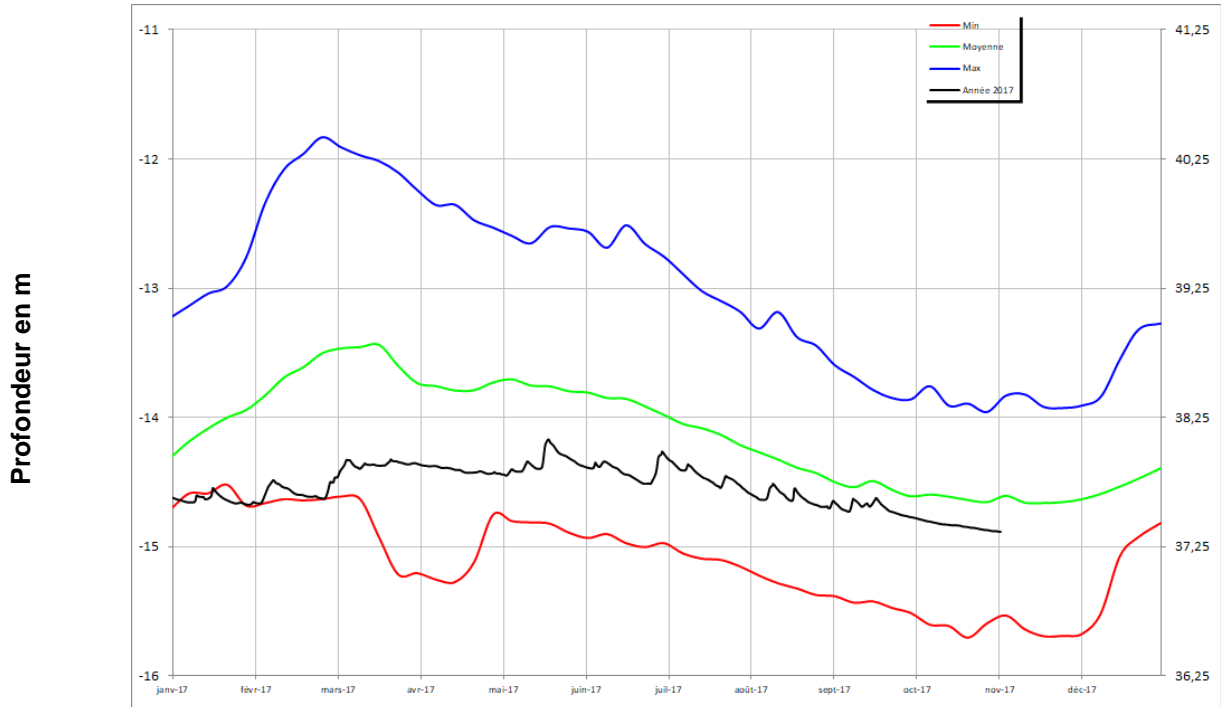
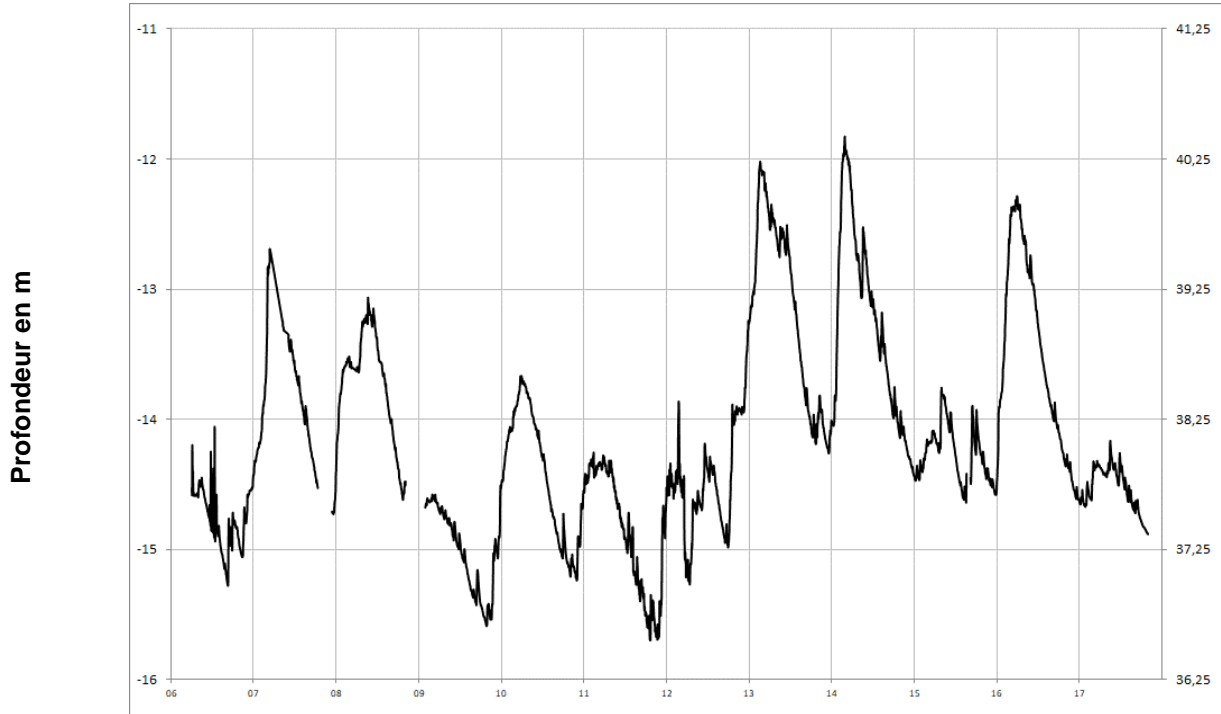
FONTAINE MILON 04552X0111/PZ





Jurassique (calcaires)

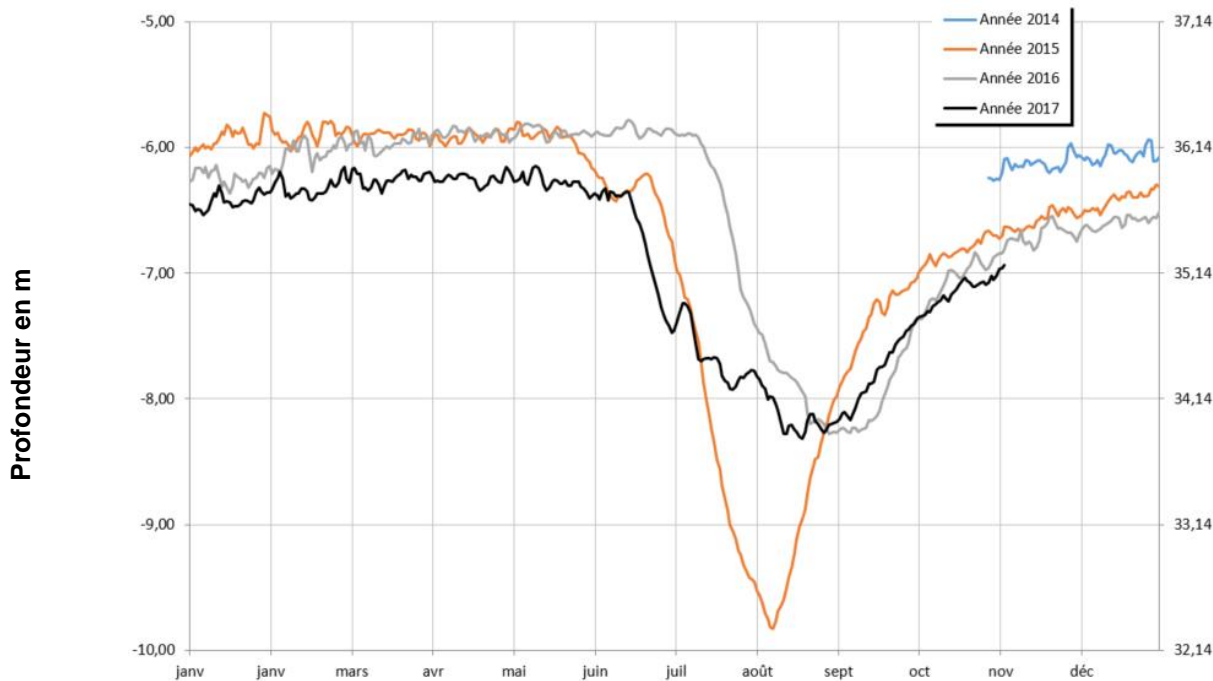
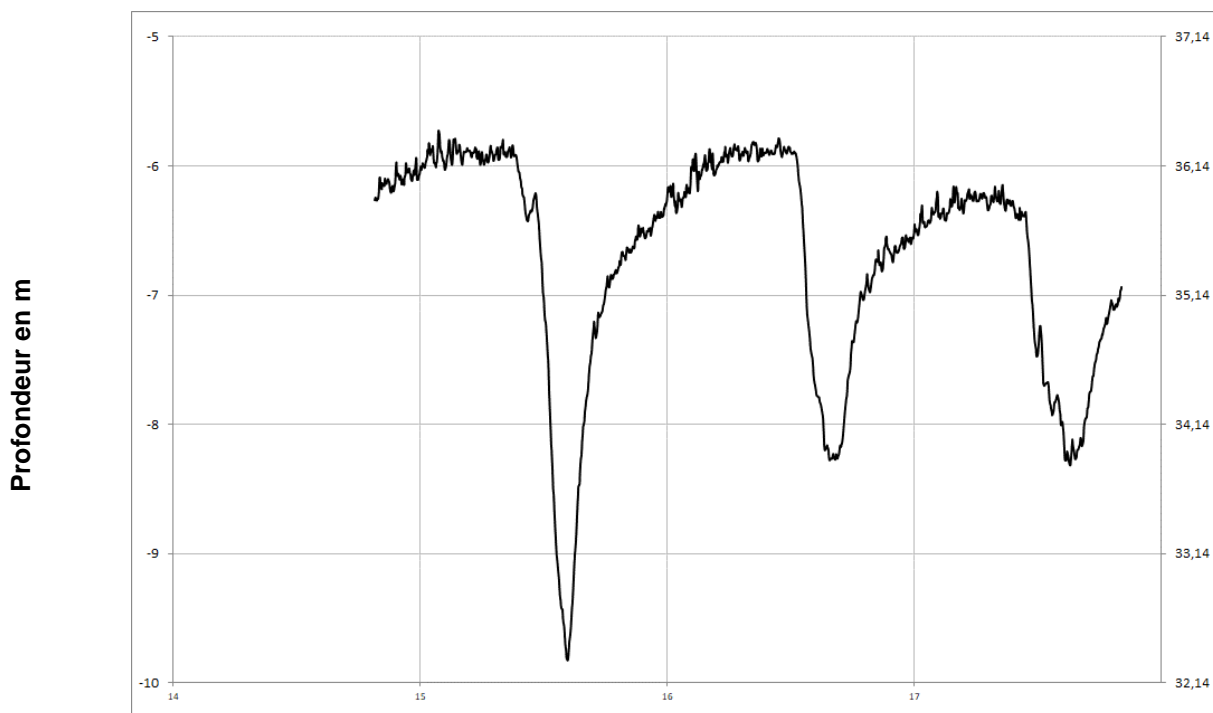
MONTREUIL-BELLAY
05123X0545/PZ





Jurassique (calcaires)

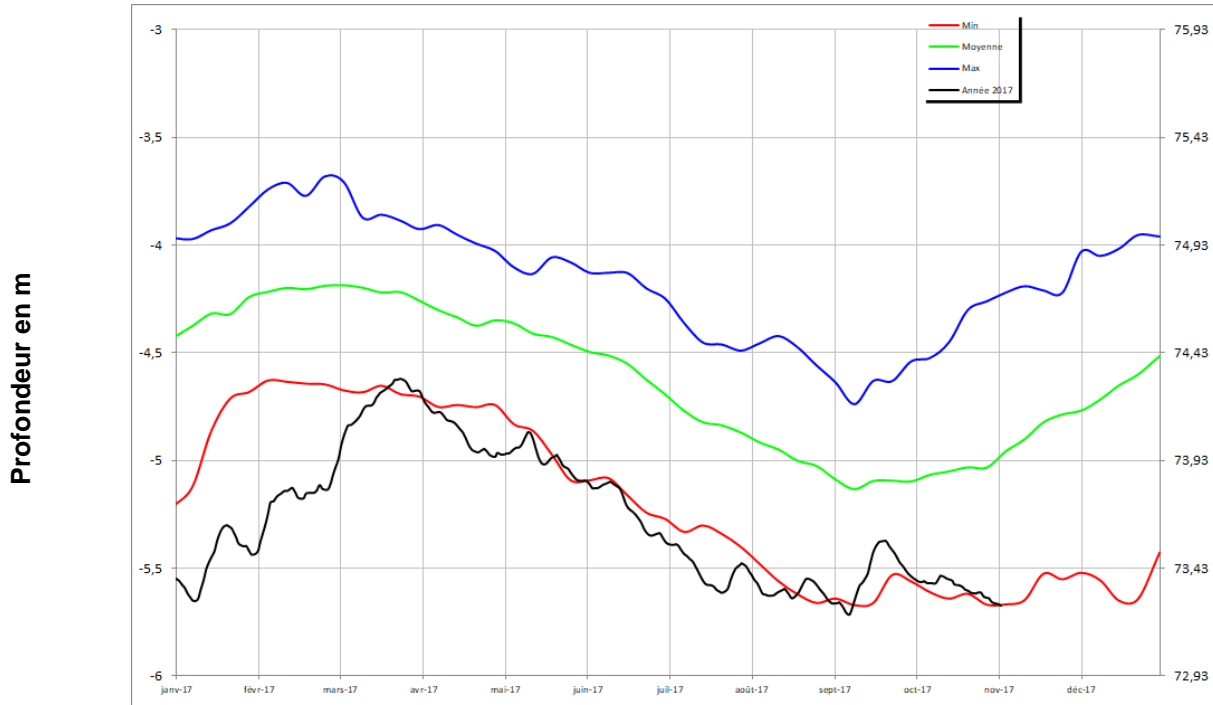
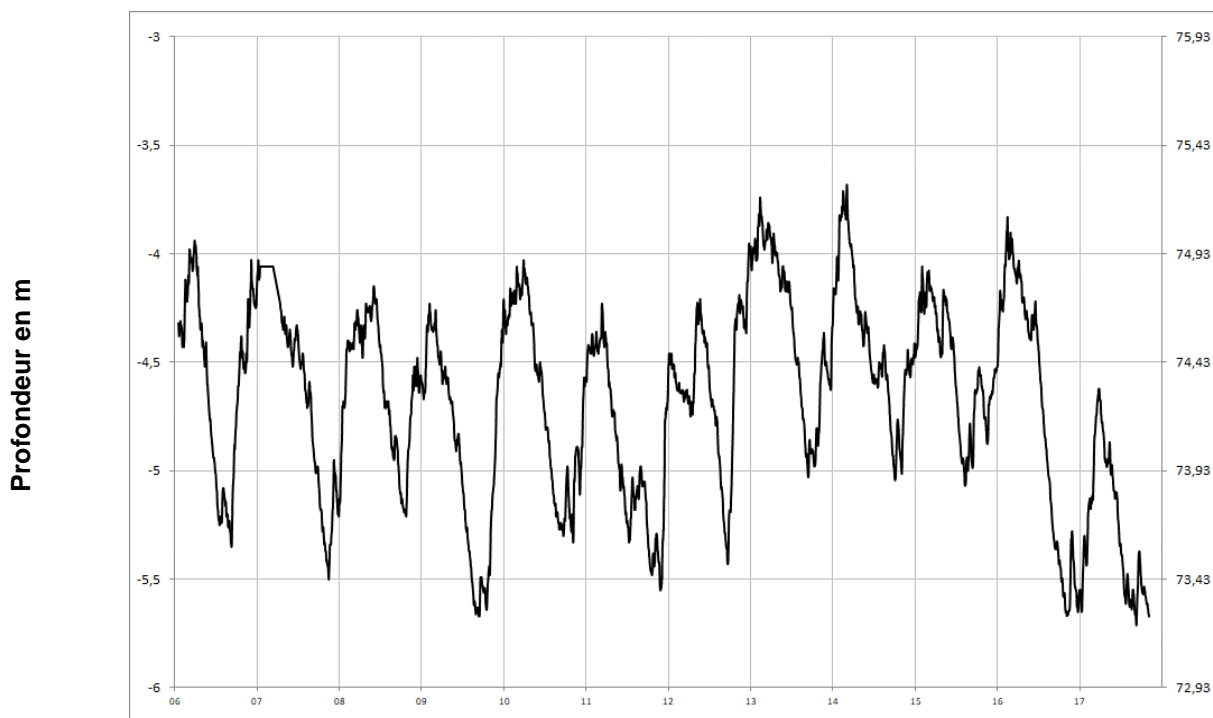
LONGUE-JUELLES 04554X0030/PZ





Socle

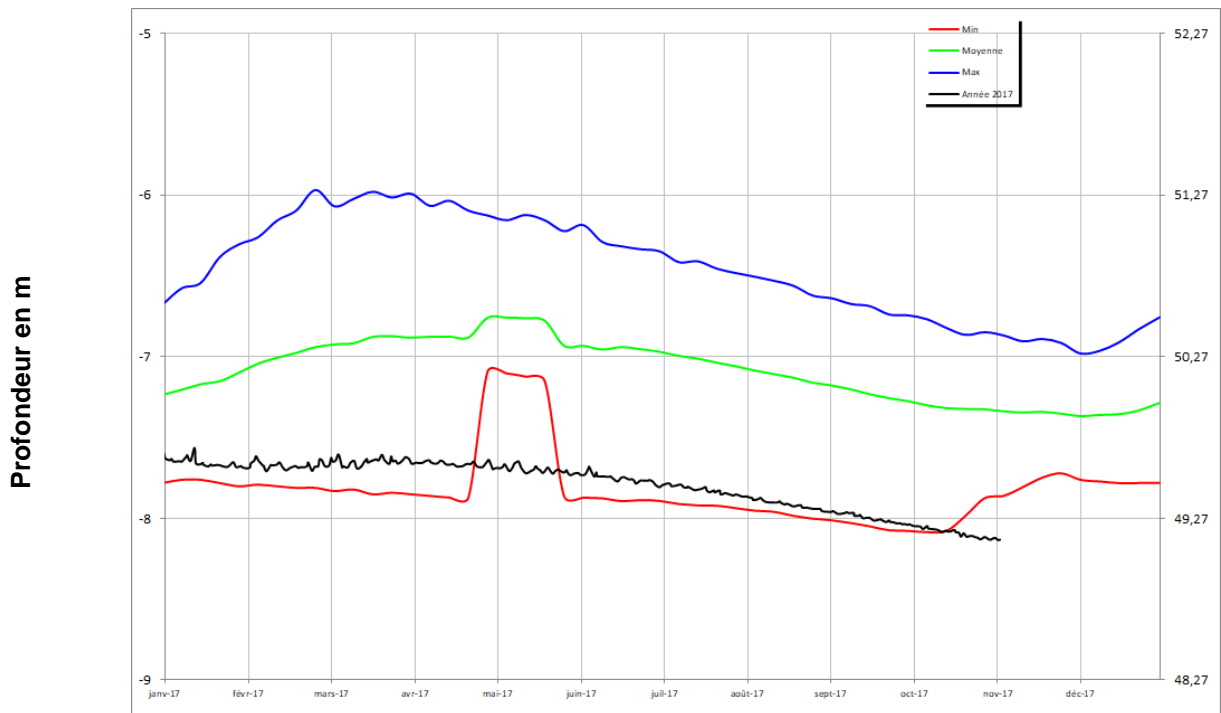
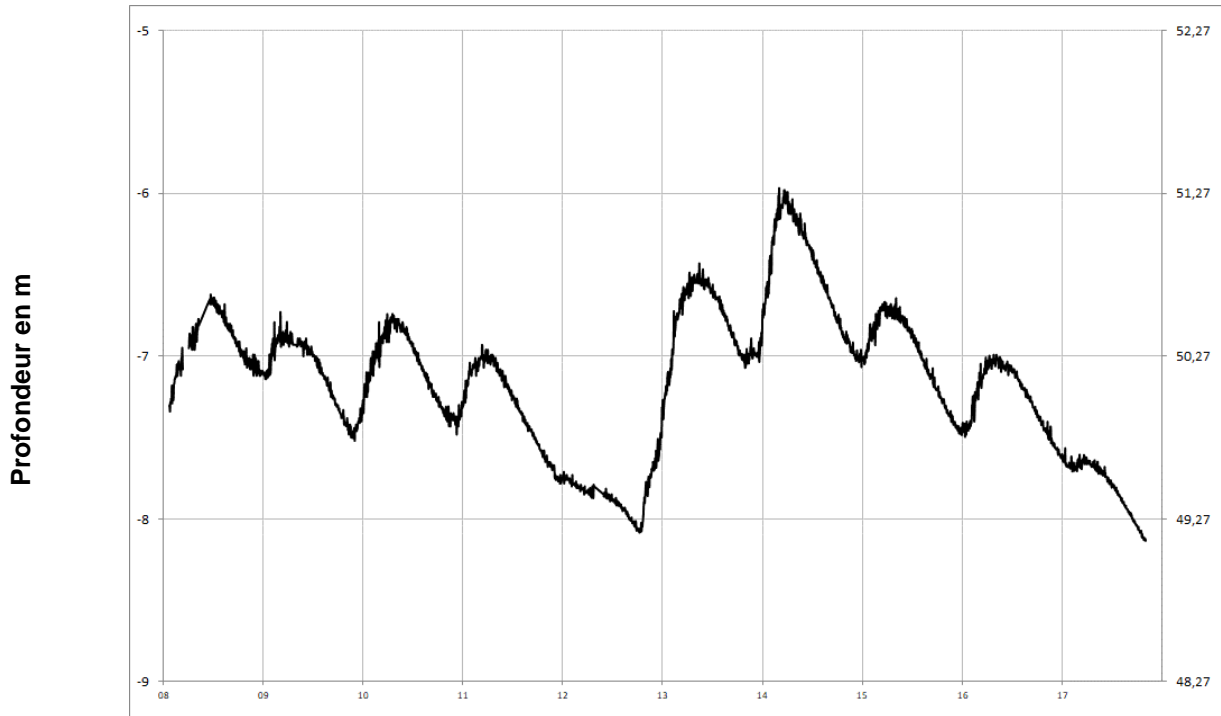
CHEMILLE
04838X0175/PZ





Socle

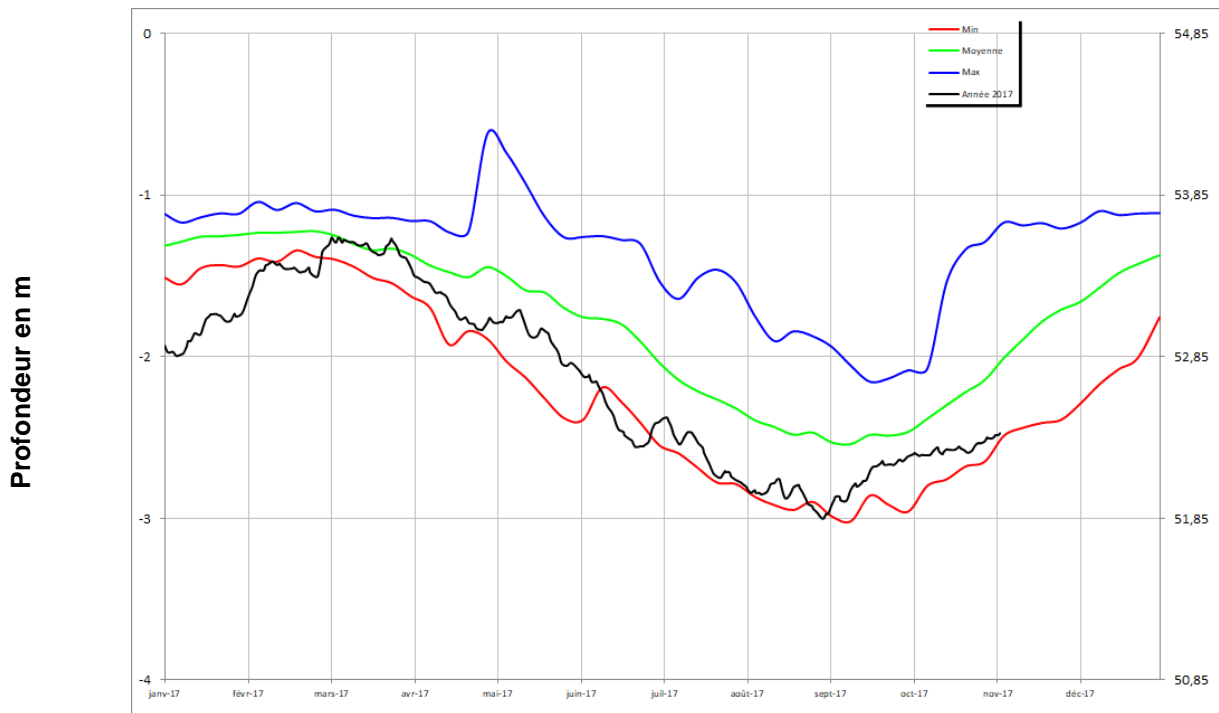
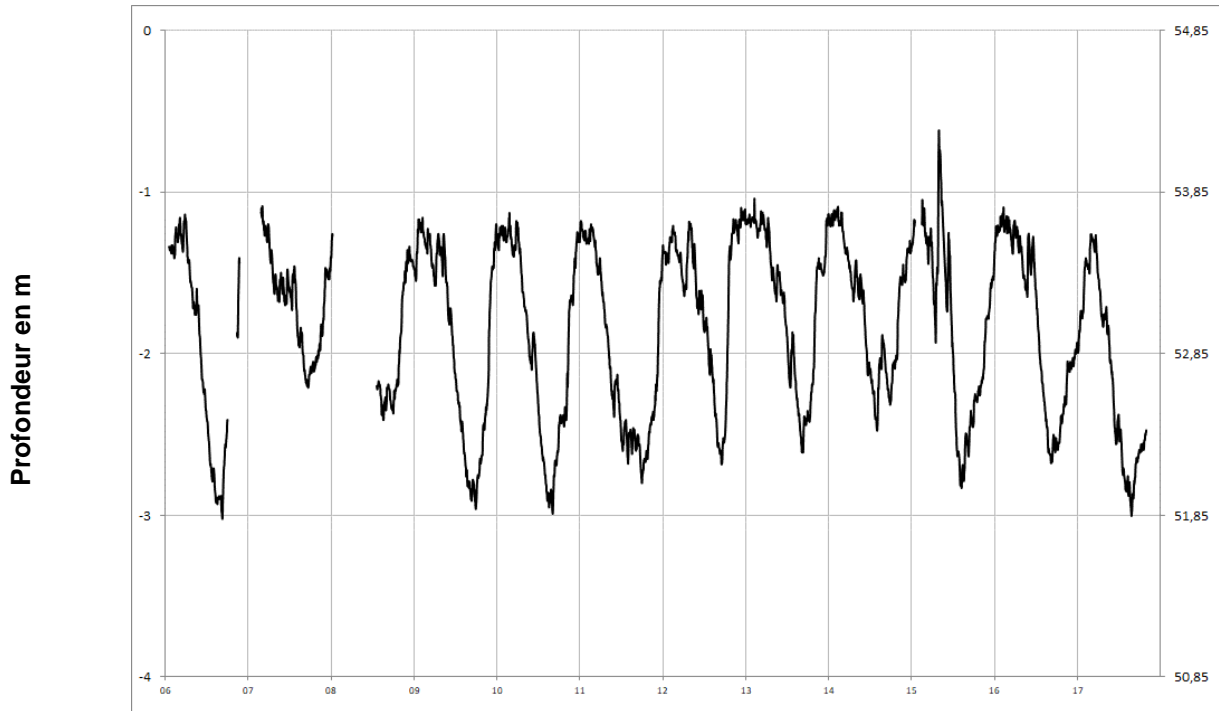
NOYANT LA GRAVOYERE 04222X0108/PZ





Socle

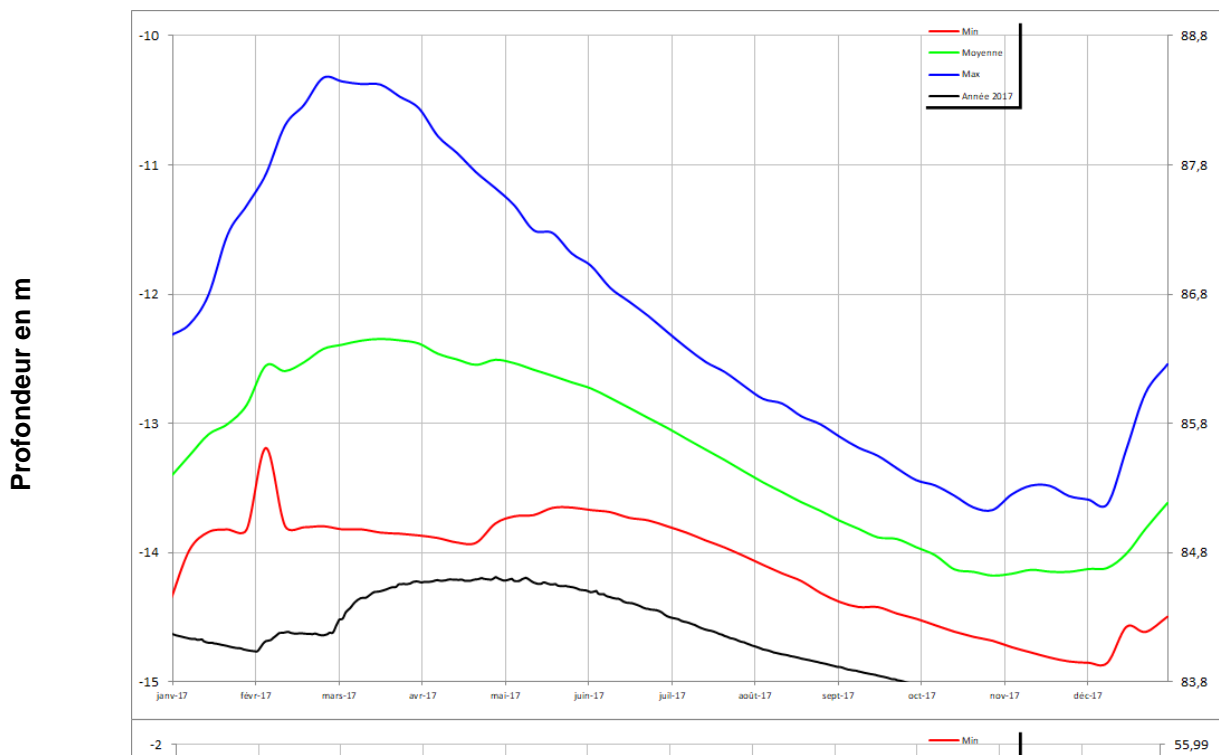
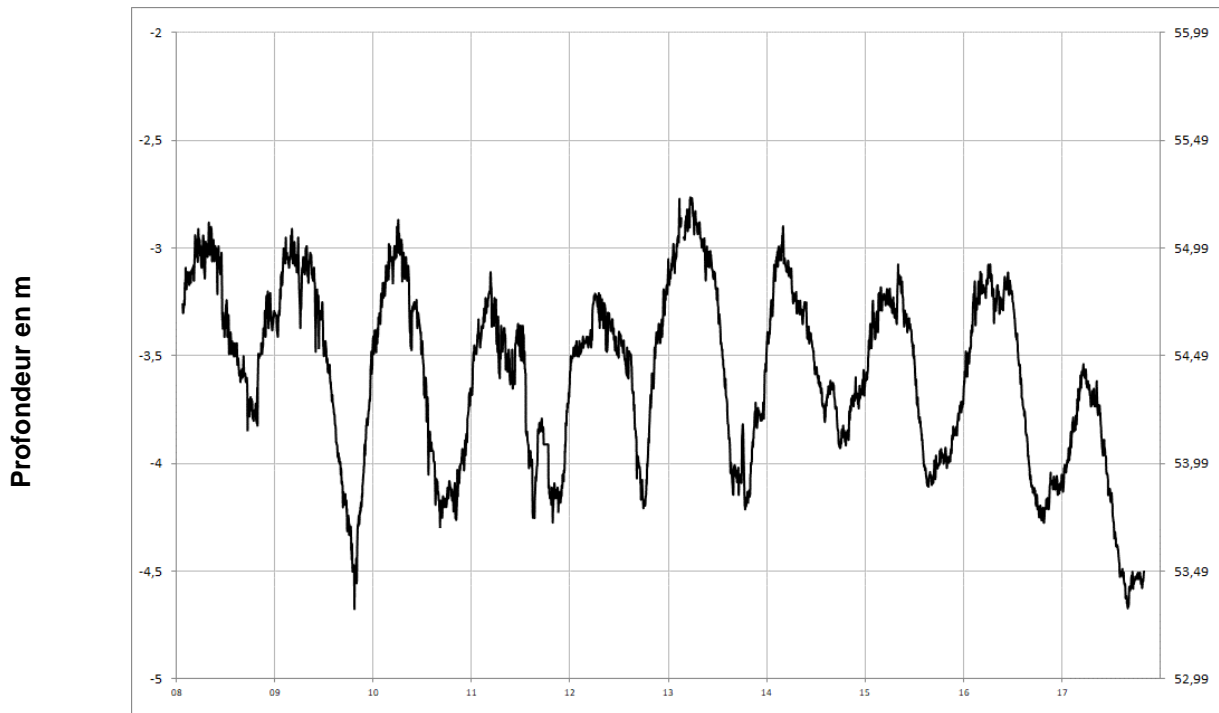
LA CORNUAILLE 04532X0051/PZ





Socle

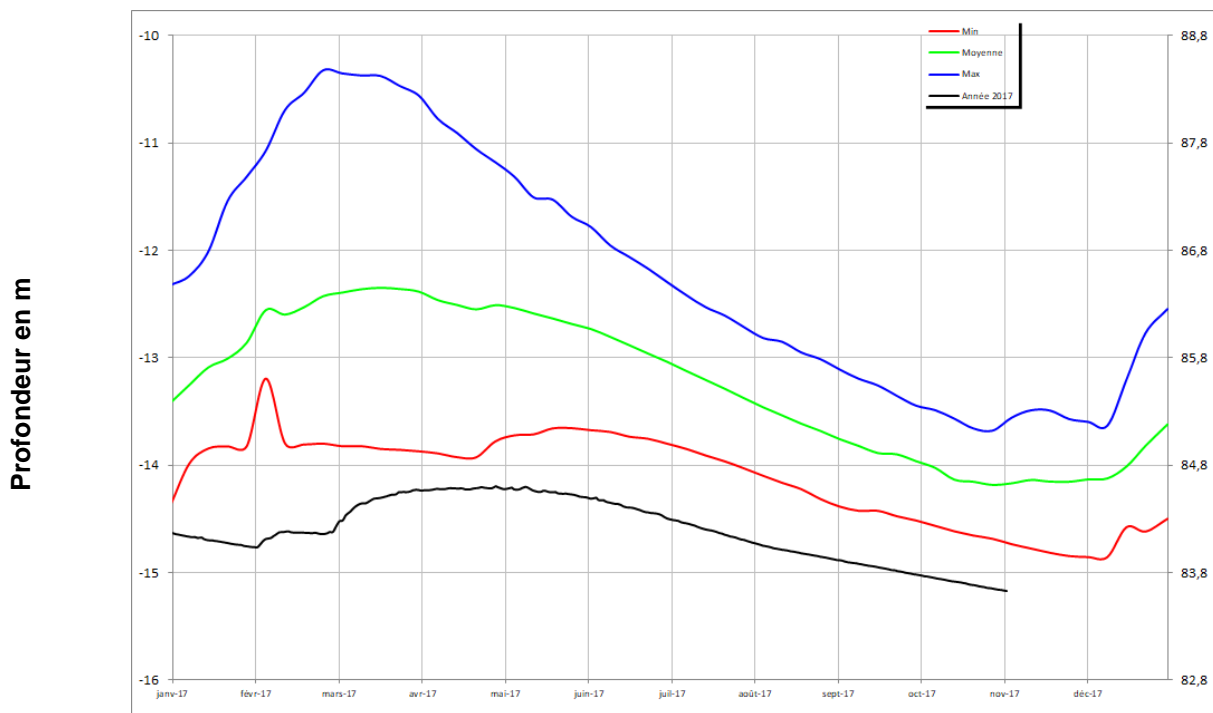
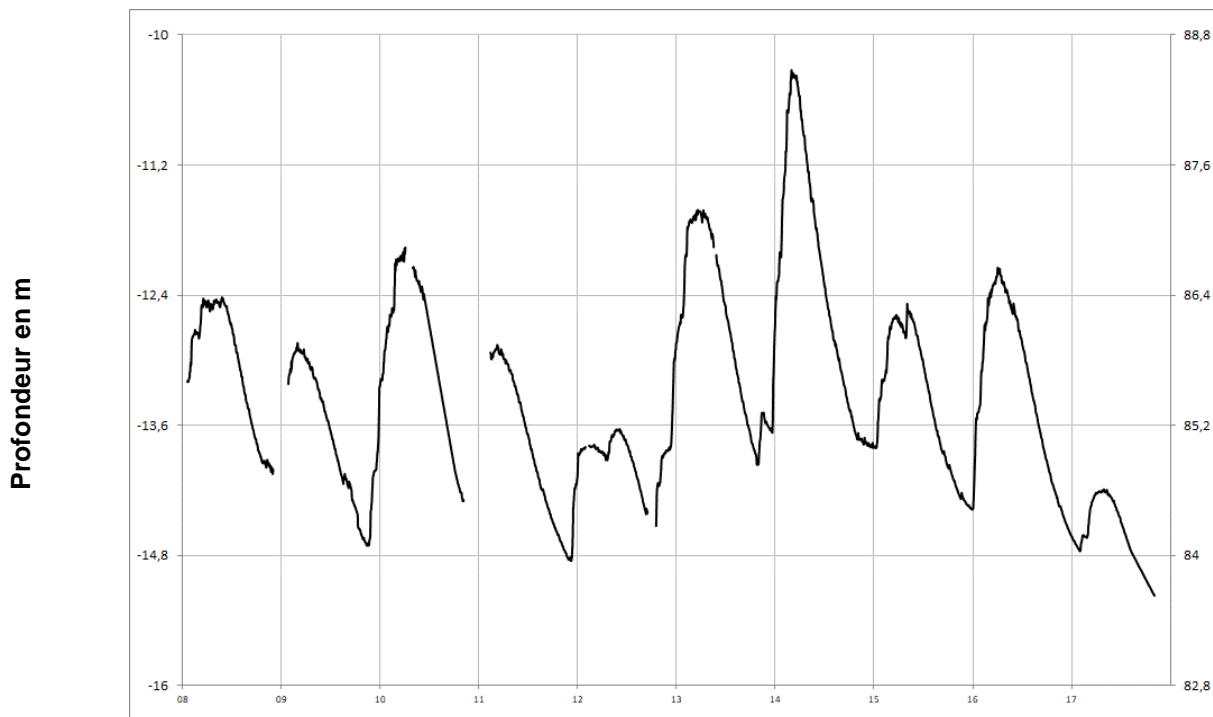
SAINT LAMBERT LA POTHERIE 04541X0016/PZ





Socle

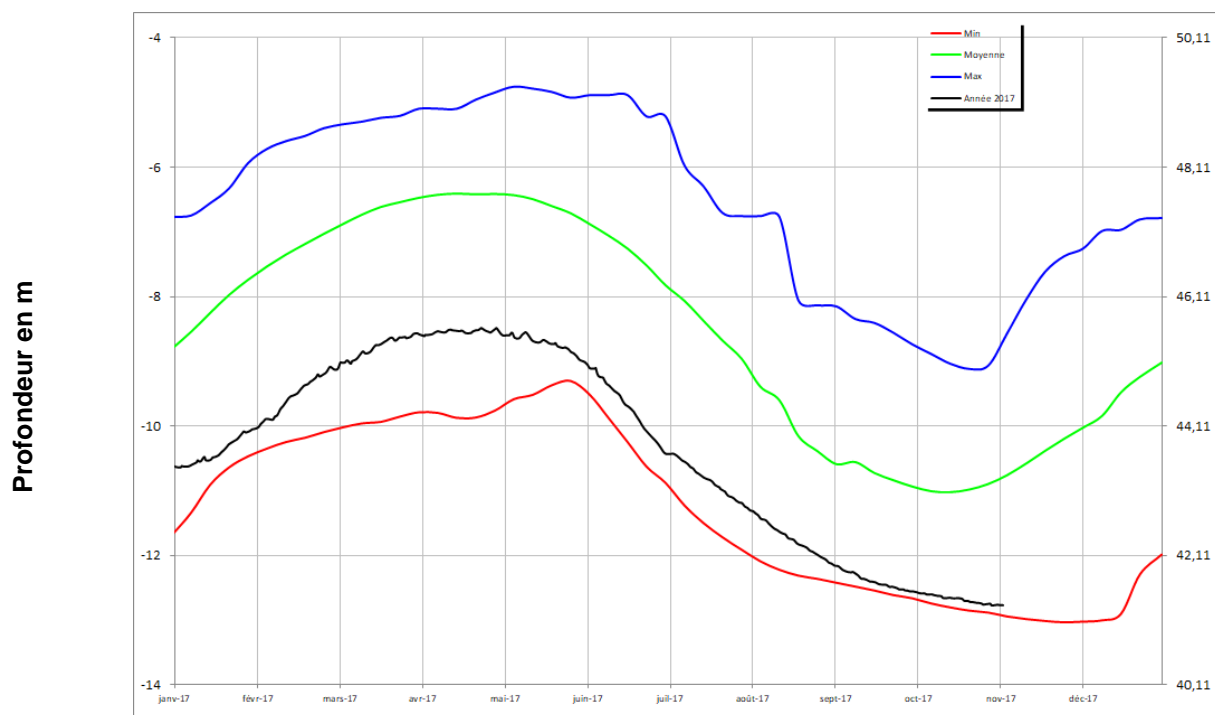
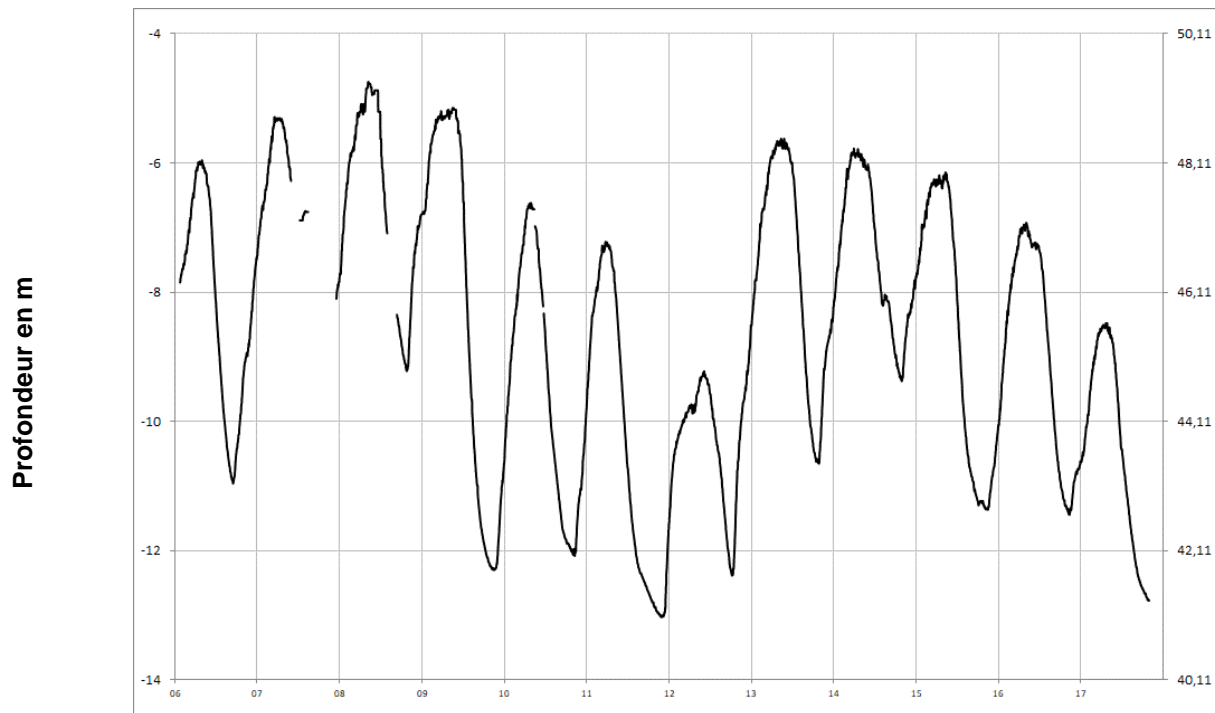
SAINT PIERRE MONTLIMART 04831X0035/PZ





Socle

CHAMPTEUSSE-SUR-BACONNE 04231X0089/PZ





Socle

SAINT MACAIRE EN MAUGES 05101X0129/PZ

